

LOC I-WA 110.15	APP CRS 303°	Rwy ldg 10201
		TDZE 1380
		Apt Elev 1384

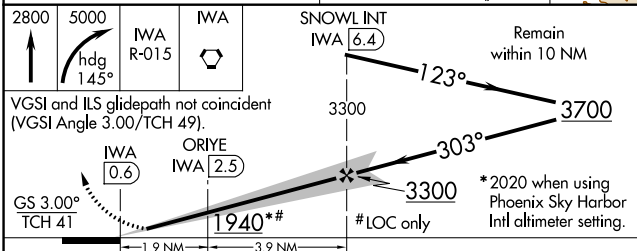
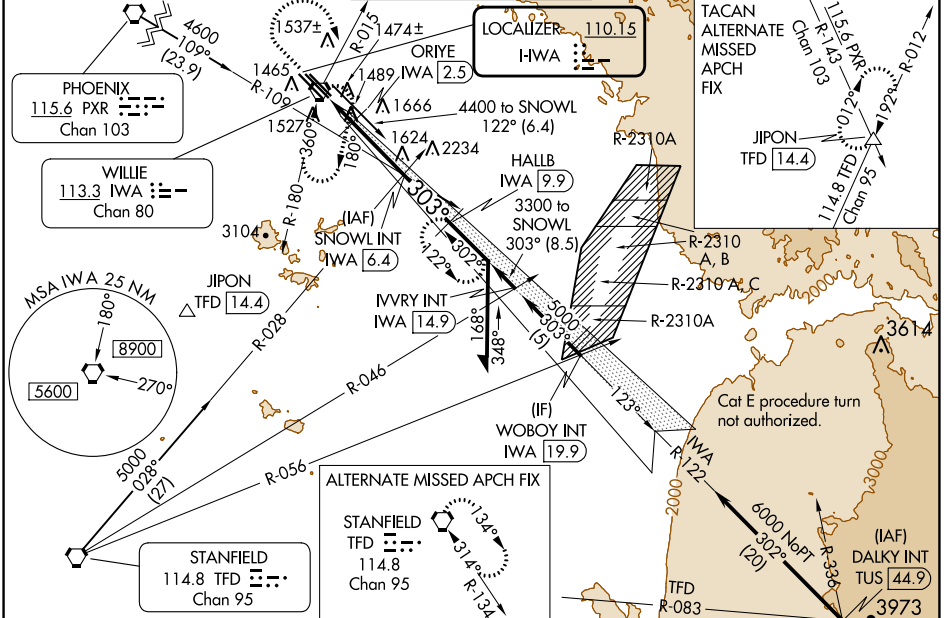
ILS or LOC RWY 30C

PHOENIX-MESA GATEWAY (IWA)

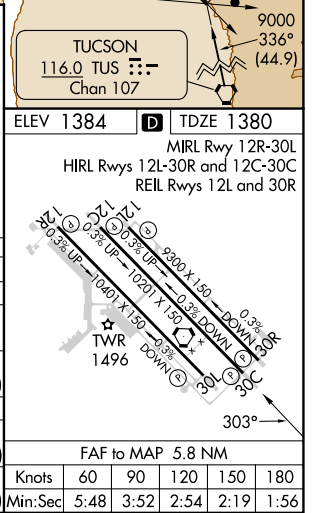
⚠ When local altimeter setting not received, use Phoenix Sky Harbor Intl altimeter setting and increase S-ILS DA to 1660 feet and all MDA 80 feet, increase S-ILS 30C, S-LOC 30C all Cats and Circling Cats C/D/E visibility ¼ SM.

MISSED APPROACH: Climb to 2800 then climbing right turn to 5000 via heading 145° and IWA VORTAC R-015 to IWA VORTAC and hold, continue climb-in-hold to 5000 (TACAN aircraft continue via IWA VORTAC R-122 to HALLB/9.9 DME and hold, continue climb-in-hold to 5000, hold SE, LT, 302° inbound).

ATIS ★ 133.5 270.275	PHOENIX APP CON 124.9 353.8	GATEWAY TOWER ★ 120.6 (CTAF) 289.4	GND CON 128.25 275.8	CLNC DEL 135.05
--------------------------------	---------------------------------------	--	--------------------------------	---------------------------



CATEGORY	A	B	C	D	E
S-ILS 30C		1580-¾	200 (200-¾)		
S-LOC 30C	1940-1	560 (600-1)	1940-1½ 560 (600-1½)	1940-1¾ 560 (600-1¾)	1940-2 560 (600-2)
CIRCLING	1940-1	556 (600-1)	1940-1½ 556 (600-1½)	2000-2 616 (700-2)	2020-2¼ 636 (700-2¼)
ORIE FIX MINIMUMS					
S-LOC 30C	1800-1	420 (500-1)	1800-1¼ 420 (500-1¼)	1800-1½ 420 (500-1½)	
CIRCLING	1880-1	496 (500-1)	1880-1½ 496 (500-1½)	2000-2 616 (700-2)	2020-2¼ 636 (700-2¼)



SW-4, 03 OCT 2024 to 31 OCT 2024

SW-4, 03 OCT 2024 to 31 OCT 2024

FAF to MAP 5.8 NM					
Knots	60	90	120	150	180
Min:Sec	5:48	3:52	2:54	2:19	1:56