

IZZO EIGHT DEPARTURE (RNAV)

AL-74 (FAA)

PHOENIX-MESA GATEWAY (IWA)
PHOENIX, ARIZONA

SW-4, 03 OCT 2024 to 31 OCT 2024

TOP ALTITUDE: ASSIGNED BY ATC

PHOENIX DEP CON
124.9 353.8
ATIS *
133.5 270.275
CLNC DEL
135.05
GND CON
128.25 275.8
GATEWAY TOWER *
120.6 289.4

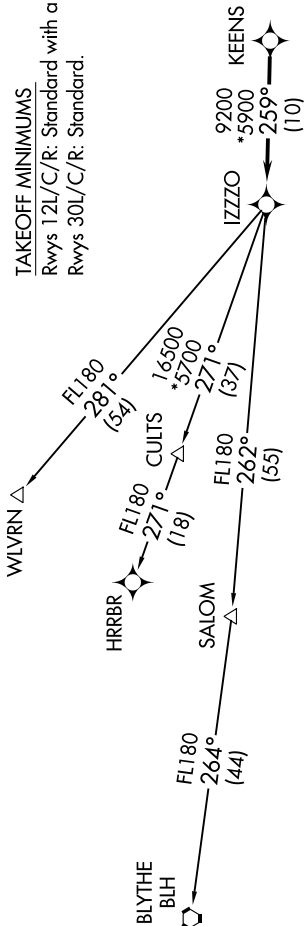
RNAV 1 - GPS.

RADAR required.

- NOTE: Turbojets and turboprops only.
- NOTE: Aircraft requesting FL220 and below must file BLYTHE Transition.
- NOTE: Turbojets landing LAX, file WLVRN Transition.
- NOTE: Aircraft landing other than LAX and turboprops landing at LAX: Requesting FL240 and above, file HRRBR Transition.
- NOTE: Aircraft departing KGEU and KGYR ATC assigned only.

TAKEOFF MINIMUMS

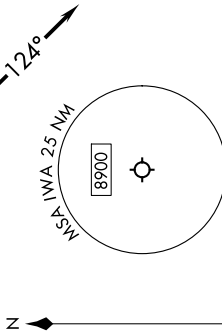
Rwys 12L/C/R: Standard with a minimum climb of 250' /NM to 3100.
Rwys 30L/C/R: Standard.



DEPARTURE ROUTE DESCRIPTION

TAKEOFF RUNWAYS 12L/C/R: Climb on heading 124° or as assigned by ATC, thence. . .
TAKEOFF RUNWAYS 30L/C/R: Climb on heading 304° or as assigned by ATC, thence. . .
. . . for RADAR vectors to KEENS, then on track 259° to IZZO, then on (transition).
Maintain ATC assigned altitude, expect filed altitude 3 minutes after departure.

- BLYTHE TRANSITION (IZZO8.BLH)
- HRRBR TRANSITION (IZZO8.HRRBR)
- WLVRN TRANSITION (IZZO8.WLVRN)



NOTE: Chart not to scale.

IZZO EIGHT DEPARTURE (RNAV)

SW-4, 03 OCT 2024 to 31 OCT 2024