

WAAS CH <b>69343</b> <b>W30D</b>	APP CRS <b>303°</b>	Rwy ldg <b>9300</b> TDZE <b>1384</b> Apt Elev <b>1384</b>
--	------------------------	---

# RNAV (GPS) RWY 30R

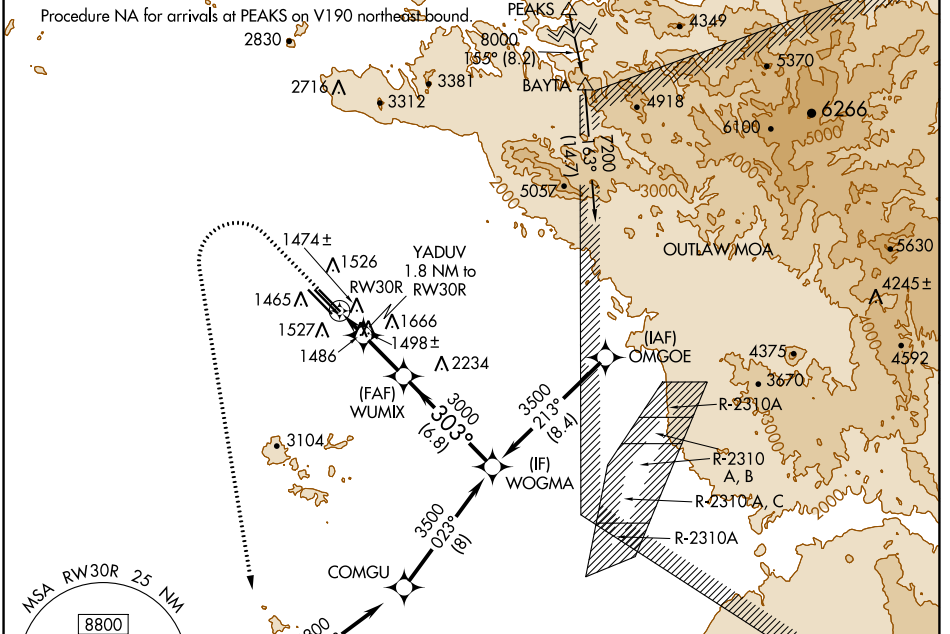
PHOENIX-MESA GATEWAY (IWA)

RNP APCH-GPS.

For uncompensated Baro-VNAV systems, LNAV/VNAV NA below -17°C or above 54°C.

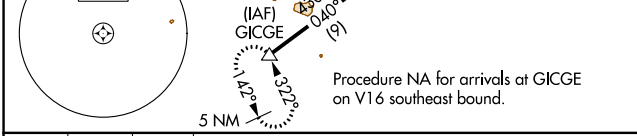
MISSED APPROACH: Climb to 2800 then climbing left turn to 5000 direct to GICGE and hold.

ATIS ★ <b>133.5 270.275</b>	PHOENIX APP CON <b>124.9 353.8</b>	GATEWAY TOWER ★ <b>120.6 (CTAF) 289.4</b>	GND CON <b>128.25 275.8</b>	CLNC DEL <b>135.05</b>
--------------------------------	---------------------------------------	--	--------------------------------	---------------------------



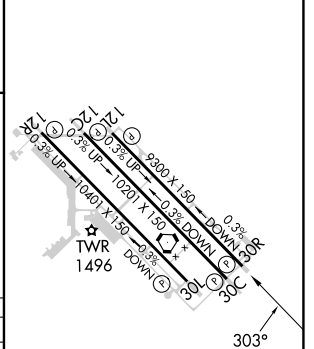
SW-4, 03 OCT 2024 to 31 OCT 2024

SW-4, 03 OCT 2024 to 31 OCT 2024



2800	5000	GICGE	VGSI and RNAV glidepath not coincident (VGSI Angle 3.00/TCH 75).	WOGMA
↑	↙	△		
*LNAV only		*0.9 NM to RWY 30R		
0.9 NM	0.9 NM	3.1 NM	6.8 NM	GP 3.00° TCH 55

ELEV 1384 **D** TDZE 1384



CATEGORY	A	B	C	D
LPV DA		1584-¾	200 (200-¾)	
LNAV/VNAV DA		1634-¾	250 (300-¾)	
LNAV MDA		1740-1	356 (400-1)	
<b>C</b> CIRCLING	1840-1	456 (500-1)	1880-1½ 496 (500-1½)	2000-2 616 (700-2)

MIRL Rwy 12R-30L  
HIRL Rwy 12L-30R and 12C-30C  
REIL Rwy 12L and 30R