

LOC I-DQG	APP CRS	Rwy Idg	<b>10000</b>
<b>111.7</b>	<b>003°</b>	TDZE	<b>707</b>
		Apt Elev	<b>748</b>

# ILS or LOC RWY 36C

CHARLOTTE/DOUGLAS INTL (CLT)

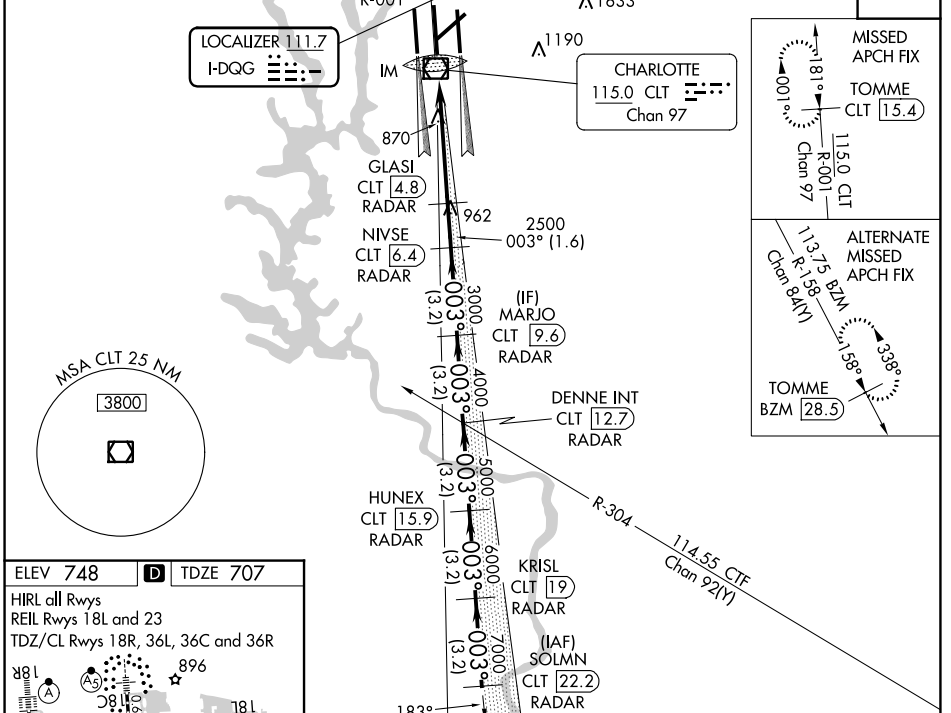
RADAR required for procedure entry. DME or RADAR required.

**⚠** Circling NA at night. Simultaneous approach authorized. DQG ILS LLZ Rwy 36C unusable for rollout guidance.

ALSIF-2  
**A**

MISSED APPROACH: Climb to 3000 on CLT VOR/DME R-001 to TOMME/CLT 15.4 DME and hold.

D-ATIS	CHARLOTTE APP CON	CHARLOTTE TOWER	GND CON	CLNC DEL
ARR <b>121.15</b>	(001°-119°) <b>128.32</b>	(Rwys 18L-36R) <b>118.1 257.8</b>	<b>121.8 348.6</b> (WEST)	<b>127.15</b>
DEP <b>132.1</b>	(120°-295°) <b>120.05</b>	(Rwy 18C-36C) <b>126.4 257.8</b>	<b>121.9 348.6</b> (EAST)	<b>348.6</b>
	(296°-360°) <b>134.75</b>	(Rwy 18R-36L) <b>133.35 257.8</b>		
	(180°-359°) <b>257.2</b>			
	(360°-179°) <b>307.8</b>			



ELEV <b>748</b>	<b>D</b>	TDZE <b>707</b>			
HIRL all Rwys					
REIL Rwys 18L and 23					
TDZ/CL Rwys 18R, 36L, 36C and 36R					
FAF to MAP 5.4 NM					
Knots	60	90	120	150	180
Min:Sec	5:24	3:36	2:42	2:10	1:48

CLT R-001	TOMME CLT 15.4	DENNE INT CLT 12.7	HUNEX CLT 19	KRISL CLT 22.2	SOLMN CLT 22.2
GLASI CLT 4.8	NIVSE CLT 6.4	MARJO CLT 9.6	DENNE INT CLT 12.7	HUNEX CLT 19	KRISL CLT 22.2
IM 2500	NIVSE CLT 6.4	MARJO CLT 9.6	DENNE INT CLT 12.7	HUNEX CLT 19	KRISL CLT 22.2
2500	3000	4000	5000	6000	7000
0.2	0.2 NM	1.6 NM	3.2 NM	3.2 NM	3.2 NM
CATEGORY	A	B	C	D	
S-ILS 36C	907/18 200 (200-1/2)				
S-LOC 36C	1120/24 413 (400-1/2)				
<b>C</b> CIRCLING	1380-1	632 (700-1)	1500-2 1/4	752 (800-2 1/4)	1500-2 1/2
			752 (800-2 1/2)		

SE-2, 03 OCT 2024 to 31 OCT 2024

SE-2, 03 OCT 2024 to 31 OCT 2024