

KILNS FIVE DEPARTURE (RNAV)

SE-2, 03 OCT 2024 to 31 OCT 2024

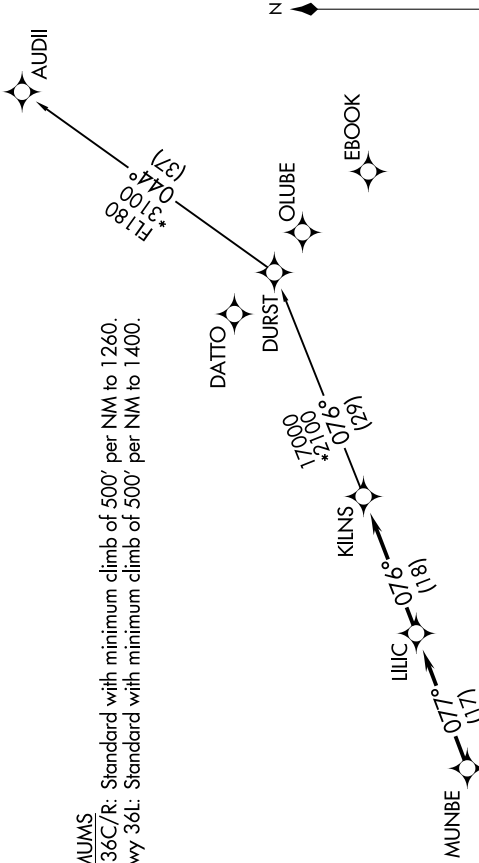
CHARLOTTE DEP CON
124.0 307.8
D-ATIS DEP 132.1
CLNC DEL
127.15 348.6
CPDLC
GND CON
121.8 348.6 (WEST)
121.9 348.6 (EAST)
CHARLOTTE TOWER
118.1 257.8 (Rwys 18L-34R)
126.4 257.8 (Rwy 18C-36C)
133.35 257.8 (Rwy 18R-36L)

RNAV 1 - DME/DME/IRU or GPS.
RADAR required.

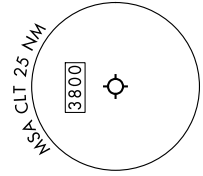
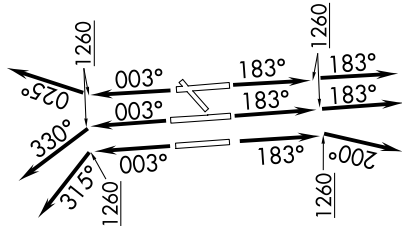
TOP ALTITUDE:
8000

TAKEOFF MINIMUMS

Rwys 18L/C/R, 36C/R: Standard with minimum climb of 500' per NM to 1260.
Rwy 36L: Standard with minimum climb of 500' per NM to 1400.



- NOTE: For turbojets only.
- NOTE: Transponder code will be issued via PDC or Charlotte CLNC DEL.
- NOTE: Accelerate to 250K, if unable advise ATC. Upon reaching 10000 MSL, accelerate to and maintain 280K, if unable advise ATC.
- NOTE: If unable to accept climb rates, advise ATC on initial contact.



NOTE: Chart not to scale.

(CONTINUED ON FOLLOWING PAGE)

SE-2, 03 OCT 2024 to 31 OCT 2024

KILNS FIVE DEPARTURE (RNAV)