

WAAS CH 56641 W22B	APP CRS 228°	Rwy Idg TDZE Apt Elev	4629 614 620
--	------------------------	-----------------------------	---

RNAV (GPS) RWY 22R

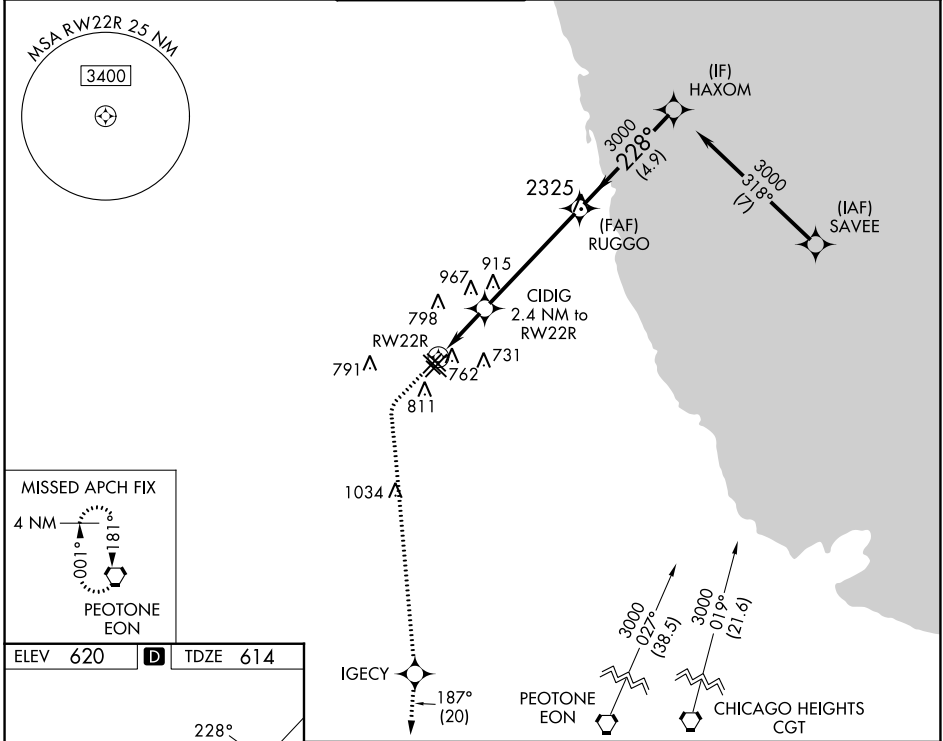
CHICAGO MIDWAY INTL (MDW)

RNP APCH.

- ⚠ Circling to Rwy 31R NA at night. For uncompensated Baro-VNAV systems, LNAV/VNAV NA below -19°C or above 54°C.
- ⚠ Rwy 22R helicopter visibility reduction below ¾ SM NA.

MISSED APPROACH: Climb to 1100 then climbing left turn to 2600 direct IGCY and on track 187° to EON VORTAC and hold.

D-ATIS 132.75	CHICAGO APP CON 128.2 388.0	MIDWAY TOWER 135.2 269.125	GND CON 118.075	CLNC DEL 124.625	CPDLC
-------------------------	---------------------------------------	--------------------------------------	---------------------------	----------------------------	-------



ELEV 620	D	TDZE 614
----------	----------	----------

1100	2600	IGCY	EON	VGSi and RNAV glidepath not coincident (VGSi Angle 3.00/TCH 35).			
				RUGGO	HAXOM		
*LNAV only.		CIDIG 2.4 NM to RW22R		3000	228°	3000	
		RW22R	*1.2 NM to RW22R		*1420	3000	GP 3.01° TCH 55
		1.2 NM	1.2 NM	4.9 NM	4.9 NM		
CATEGORY	A		B		C		D
LPV DA			893-7/8		279 (300-7/8)		
LNAV/VNAV DA			1005-1/8		391 (400-1/8)		
LNAV MDA	1020-1		406 (400-1)		1020-1 1/8		406 (400-1/8)
C CIRCLING	1120-1		500 (500-1)		1340-2		1340-2 1/4
				720 (800-2)		720 (800-2 1/4)	

HIRL Rws 4R-22L and 13C-31C
MIRL Rws 4L-22R, 13L-31R, and 13R-31L
REIL Rws 4R, 22L, and 31C
RLS Rws 13C and 31C

EC-3, 03 OCT 2024 to 31 OCT 2024

EC-3, 03 OCT 2024 to 31 OCT 2024