

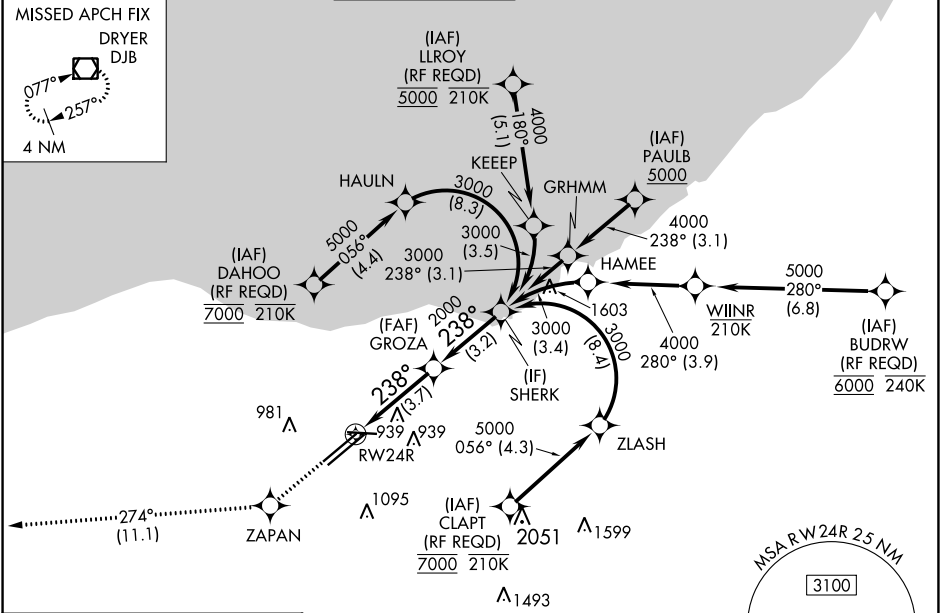
# RNAV (RNP) Z RWY 24R

CLEVELAND-HOPKINS INTL (CLE)

APP CRS	Rwy Idg	<b>9000</b>
<b>238°</b>	TDZE	<b>780</b>
	Apt Elev	<b>799</b>

RNP AR APCH.	ALSF-2 	MISSED APPROACH: Climb to 3000 direct ZAPAN and on track 274° to DJB VOR/DME and hold.
For uncompensated Baro-VNAV systems, procedure NA below -18°C (0°F) or above 54°C (130°F). For inop ALS, increase RNP 0.13 all Cats visibility to RVR 4500.		

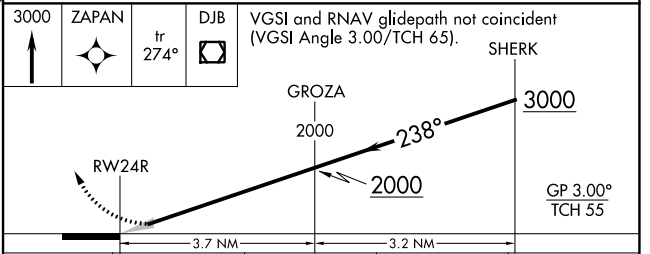
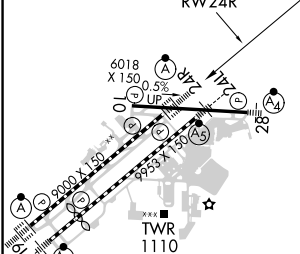
D-ATIS ARR <b>127.85</b> DEP <b>132.375</b>	CLEVELAND APP CON <b>126.55 346.325</b>	CLEVELAND TOWER <b>124.5 273.45</b>	GND CON <b>121.7 273.45</b>	CLNC DEL <b>125.05 273.45</b>	CPDLC
---	--	--	--------------------------------	----------------------------------	-------



EC-2, 03 OCT 2024 to 31 OCT 2024

EC-2, 03 OCT 2024 to 31 OCT 2024

ELEV 799	<b>D</b>	TDZE 780
----------	----------	----------



CATEGORY	A	B	C	D
RNP 0.13 DA		1064/24	284 (300-½)	
RNP 0.30 DA		1176/35	396 (400-¾)	

### AUTHORIZATION REQUIRED