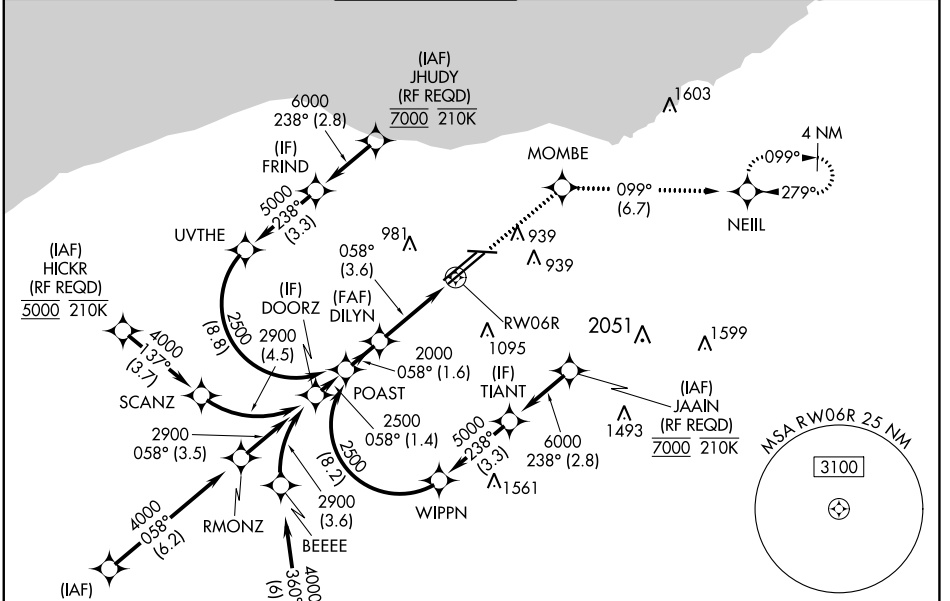


| | | |
|-------------|----------|-------------|
| APP CRS | Rwy Idg | 8029 |
| 058° | TDZE | 777 |
| | Apt Elev | 799 |

RNAV (RNP) Z RWY 6R

CLEVELAND-HOPKINS INTL (CLE)

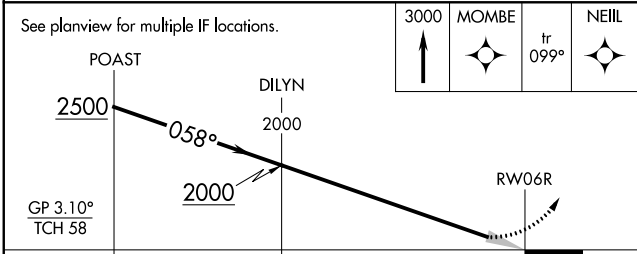
| | | | | | | |
|--|---|---|---------------------------------------|---|--------------|--|
| RNP AR APCH. ▼ For unconsented Baro-VNAV systems, procedure NA below -18°C (0°F) or above 46°C (114°F). For inop ALS, increase RNP 0.15 all Cots visibility to RVR 5500. | | | MALSR | MISSED APPROACH: Climb to 3000 direct MOMBE and on track 099° to NEILL and hold. *Missed approach requires minimum climb of 270 feet per NM to 1400. | | |
| D-ATIS ARR 127.85 DEP 132.375 | CLEVELAND APP CON 126.55 346.325 | CLEVELAND TOWER 124.5 273.45 | GND CON 121.7 273.45 | CLNC DEL 125.05 273.45 | CPDLC | |



EC-2, 03 OCT 2024 to 31 OCT 2024

EC-2, 03 OCT 2024 to 31 OCT 2024

| | |
|----------|-------------------|
| ELEV 799 | D TDZE 777 |
|----------|-------------------|



| | | | | |
|--------------|---|---------|---|---|
| CATEGORY | A | B | C | D |
| RNP 0.15 DA* | | 1127/30 | 350 (400- ² / ₃) | |
| RNP 0.30 DA | | 1229/45 | 452 (500- ² / ₃) | |

AUTHORIZATION REQUIRED

