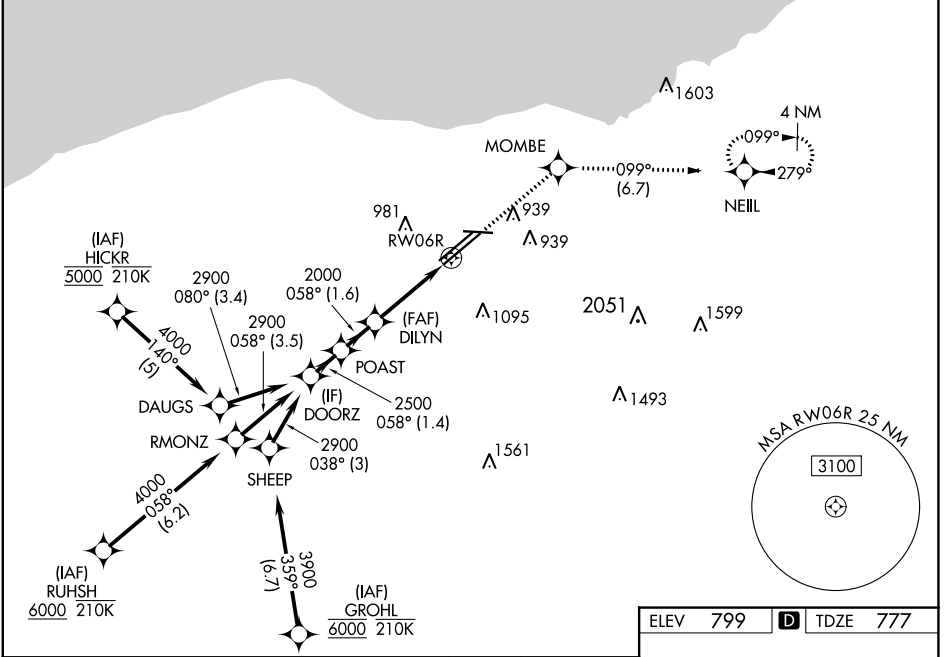


WAAS CH 81806 W06B	APP CRS 058°	Rwy Idg TDZE 777 Apt Elev 799	8029
--	------------------------	---	-------------

RNAV (GPS) Y RWY 6R

CLEVELAND-HOPKINS INTL (CLE)

RNP APCH.		MALSR		MISSED APPROACH: Climb to 3000 direct MOMBE and on track 099° to NEILL and hold.	
<p>▼ For uncompensated Baro-VNAV systems, LNAV/VNAV NA below -18°C (0°F) or above 46°C (114°F). Circling Rwy 10 NA at night. For inop ALS, increase LNAV Cats C/D visibility to 1½ SM.</p>					
D-ATIS ARR 127.85 DEP 132.375	CLEVELAND APP CON 126.55 346.325	CLEVELAND TOWER 124.5 273.45	GND CON 121.7 273.45	CLNC DEL 125.05 273.45	CPDLC

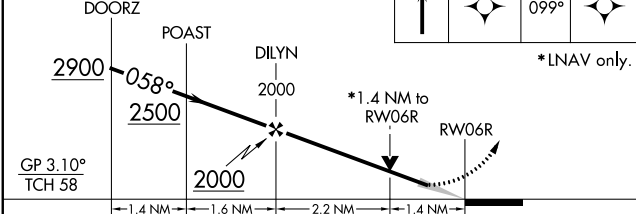


EC-2, 03 OCT 2024 to 31 OCT 2024

EC-2, 03 OCT 2024 to 31 OCT 2024

VGSI and RNAV glidepath not coincident (VGSI Angle 3.00/TCH 73).

3000	MOMBE	tr 099°	NEILL
------	-------	---------	-------



CATEGORY	A	B	C	D
LPV DA		977/18	200 (200-½)	
LNAV/VNAV DA		1227/45	450 (500-¾)	
LNAV MDA	1260/24	483 (500-½)	1260/50	483 (500-1)
C CIRCLING	1420-1	621 (700-1)	1420-1¾ 621 (700-1¾)	1420-2 621 (700-2)

