

# COLUMBUS FOUR DEPARTURE

AL-91 [USAF]

COLUMBUS, MISSISSIPPI

ATIS ★ 115.2 273.5  
 CLNC DEL ★  
 269.55  
 GND CON ★  
 121.9 275.8  
 TOWER ★  
 126.65 379.925  
 DEP CON ★  
 134.55 350.3

RADAR required

Rwy	Knots	60	120	180	240	300	360
13C	V/V(fpm)	210	420	630	840	1050	1260
13L	V/V(fpm)	220	440	660	880	1100	1320

Minimum Climb Rate to 700

1020

HOLLY SPRINGS  
 112.4 HLI  
 Chan 71  
 L-18

HAMILTON  
 HAB  
 Chan 41  
 L-18

990  
 A

COLUMBUS 1

CALEDONIA  
 115.2 CBM  
 Chan 99

JANHO  
 CBM 3.4

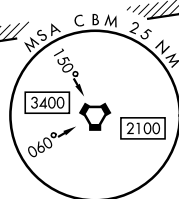
FILAM  
 CBM 3.4

MENEE  
 CBM 3.4

COSOB  
 CBM 3.4

BIGBEE  
 116.2 IGB  
 Chan 109  
 L-18, H-6

SIDON  
 114.7 SQS  
 Chan 94  
 L-18, H-6



V278/152

R-086

R-266

SC-4, 03 OCT 2024 to 31 OCT 2024

SC-4, 03 OCT 2024 to 31 OCT 2024

## DEPARTURE ROUTE DESCRIPTION

NOTE: Rwy 13/31C departure will be towards a raised MA-1A barrier approximately 110' into the overrun and 4' high.

TAKEOFF RWY 13C: Climb on heading 135° to intercept CBM VORTAC R-138, direct COSOB (CBM R-138/3.4 DME), then via ATC instructions.

TAKEOFF RWY 13L: Climb on heading 135° to intercept CBM VORTAC R-132, direct MENEE (CBM R-132/3.4 DME), then via ATC instructions.

TAKEOFF RWY 31C: Climb on heading 315° to intercept CBM VORTAC R-312, direct FILAM (CBM R-312/3.4 DME), then via ATC instructions.

TAKEOFF RWY 31R: Climb heading 315° to intercept CBM VORTAC R-318, direct JANHO (CBM R-318/3.4 DME), then via ATC instructions.

# COLUMBUS FOUR DEPARTURE

COLUMBUS, MISSISSIPPI  
 COLUMBUS AFB (KCBM)