

COLUMBUS, MISSISSIPPI

# HI-ILS or LOC Z RWY 13C

LOC I-CBM <b>109.3</b>	APCH CRS <b>135°</b>	Rwy Idg 13C 13L	TDZE <b>12,004</b> <b>196</b> <b>194</b>	Arprt Elev <b>218</b> <b>218</b>
---------------------------	-------------------------	-----------------------	---	--

AL-91 [USAF]

COLUMBUS AFB (KCBM)

▲ \*When ALS inop, increase RVR to 40, vis to ¼ mile.  
\*\*When ALS inop, increase vis to 1½ miles.

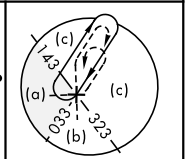
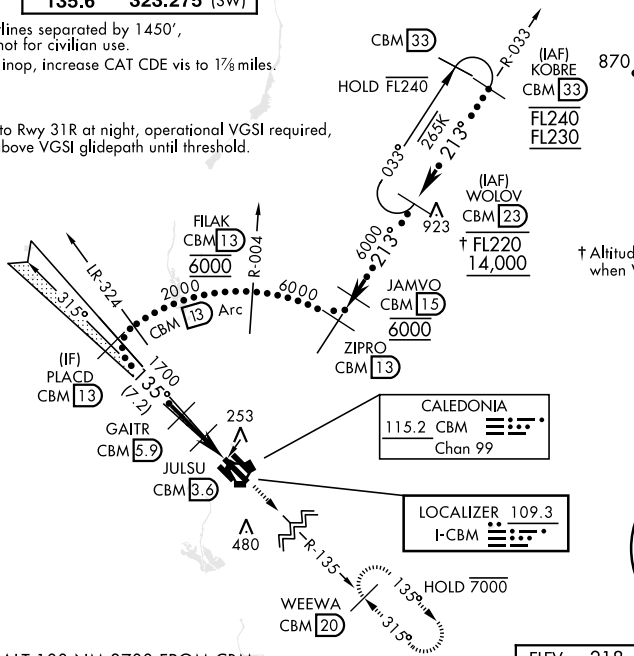


MISSED APPROACH: Climb heading 135° to intercept the CBM VORTAC R-135 outbound to WEEWA (CBM R-135/20) and hold. Maintain 4000

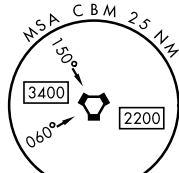
ATIS★ <b>115.2 273.5</b>	APP CON★ <b>126.075 239.25</b> (N) <b>134.55 350.3</b> (SE) <b>135.6 323.275</b> (SW)	TOWER★ <b>126.65 379.925</b>	GND CON★ <b>121.9 275.8</b>	CLNC DEL★ <b>269.55</b>
-----------------------------	--	---------------------------------	--------------------------------	----------------------------

\*\*\* CAUTION:  
Rwy centerlines separated by 1450',  
SIDESTEP not for civilian use.  
\*\*\*\* When ALS inop, increase CAT CDE vis to 1½ miles.

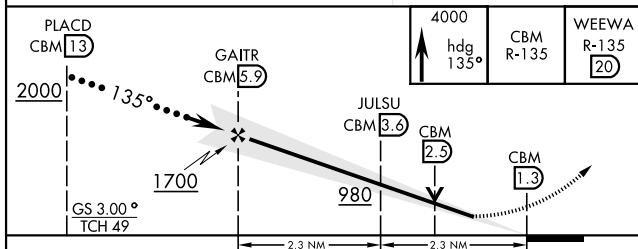
When circling to Rwy 31R at night, operational VGSI required,  
remain on or above VGSI glidepath until threshold.



† Altitude restriction only applies when WOLOV is IAF.

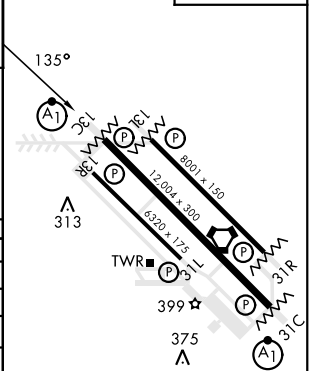


EMERG SAFE ALT 100 NM 3700 FROM CBM



ELEV 218	TDZE 13C 196
	TDZE 13L 194

CATEGORY	C	D	E
S-ILS 13C*	396/24	200	(200-½)
S-LOC 13C**	640/45	444	(500-¾)
SIDESTEP *** RWY 13L	640-1½	446	(500-1¾)
Ⓢ CIRCLING	740-1½ 522 (600-1½)	880-2 662 (700-2)	1240-3 1022 (1100-3)
LOCAL ALTIMETER, WITHOUT LAST STEPDOWN FIX			
S-LOC 13C****	840-1¾	644	(700-1¾)
SIDESTEP *** RWY 13L	840-1¾	646	(700-1¾)
Ⓢ CIRCLING	840-1¾ 622 (700-1¾)	880-2 662 (700-2)	1240-3 1022 (1100-3)



MIRL Rwy 13R-31L					
HIRL Rwy 13C-31C, 13L-31R					
FAF to MAP 4.6 NM					
Knots	120	140	160	180	200
Min:Sec	2:18	1:58	1:44	1:32	1:23

COLUMBUS, MISSISSIPPI

33° 39'N-88° 27'W

COLUMBUS AFB (KCBM)

Amdt 2 21APR22

# HI-ILS or LOC Z RWY 13C

SC-4, 03 OCT 2024 to 31 OCT 2024

SC-4, 03 OCT 2024 to 31 OCT 2024