

COLUMBUS, MISSISSIPPI

ILS or LOC Y RWY 13C

LOC I-CBM 109.3	APCH CRS 135°	Rwy Idg TDZE Arprt Elev	13C 12,004 196 218	13L 8001 194 218
---------------------------	-------------------------	-------------------------------	--	--

AL-91 [USAF]

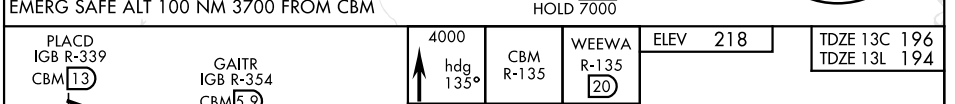
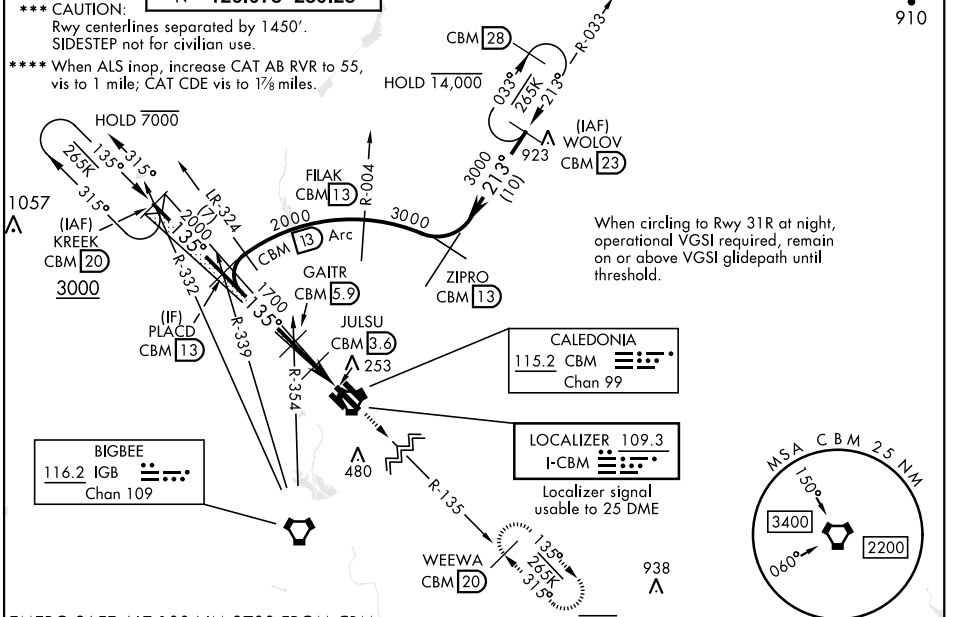
COLUMBUS AFB (KCBM)

▼ * When ALS inop, increase RVR to 40, vis to ¼ mile.
 ** When ALS inop, increase CAT AB RVR to 55, vis to 1 mile, CAT CDE vis to 1 ½ miles.

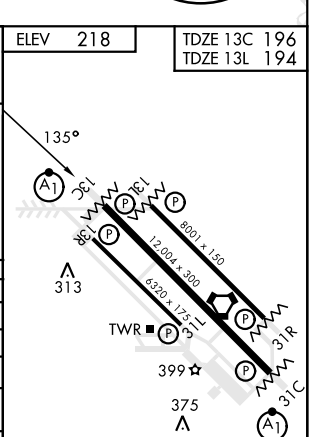


MISSED APPROACH: Climb heading 135° to intercept the CBM VORTAC R-135 outbound to WEEWA (CBM R-135/20) and hold. Maintain 4000

ATIS ★ 115.2 273.5	APP CON ★ SE 134.55 350.3 SW 135.6 323.275 N 126.075 239.25	TOWER ★ 126.65 379.925	GND CON ★ 121.9 275.8	CLNC DEL ★ 269.55
------------------------------	---	----------------------------------	---------------------------------	-----------------------------



PLACD IGB R-339 CBM 13	GAITR IGB R-354 CBM 5.9	JULSU CBM 3.6	WEWEWA R-135 CBM 20
2000	1700	980	218
GS 3.00° TCH 49		2.3 NM	2.3 NM



CATEGORY	A	B	C	D	E
S-ILS 13C **	396/24		200	(200-½)	
S-LOC 13C **	640/24	444 (500-½)	640/45	444 (500-¾)	
SIDESTEP RWY 13L ***	640/55	446 (500-1)	640/1 ½	446 (500-1 ½)	
CIRCLING	700-1 482 (500-1)	720-1 502 (600-1)	740-1 ½ 522 (600-½)	880-2 662 (700-2)	1240-3 1022 (1100-3)
LOCAL ALTIMETER, WITHOUT LAST STEPDOWN FIX					
S-LOC 13C ****	840/24	644 (700-½)	840-1 ½	644 (700-1 ½)	
SIDESTEP RWY 13L ****	840/55	646 (700-1)	840-1 ½	646 (700-1 ½)	
CIRCLING	840-1	622 (700-1)	840-1 ½ 622 (700-1 ½)	880-2 662 (700-2)	1240-3 1022 (1100-3)

MIRL Rwy 13R-31L					
HIRL Rwy 13C-31C, 13L-31R					
FAF to MAP 4.6 NM					
Knots	60	90	120	150	180
Min:Sec	4:36	3:04	2:18	1:50	1:32

COLUMBUS, MISSISSIPPI

33°39'N-88°27'W

COLUMBUS AFB (KCBM)

Amdt 2 19MAY22

ILS or LOC Y RWY 13C

SC-4, 03 OCT 2024 to 31 OCT 2024

SC-4, 03 OCT 2024 to 31 OCT 2024