

COLUMBUS, MISSISSIPPI

ILS or LOC Y RWY 31C

LOC I-TBB 108.7	APCH CRS 315°	Rwy Ldg TDZE Arprt Elev	31C 12,004 213 218	31R 8001 218 218
---------------------------	-------------------------	-------------------------------	--	--

AL-91 [USAF]

COLUMBUS AFB (KCBM)

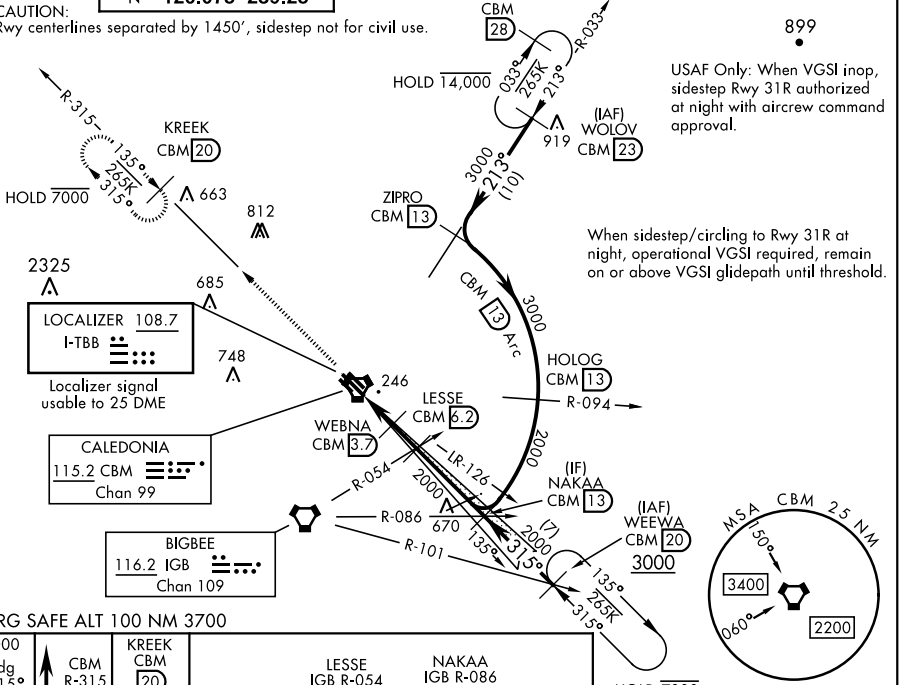
▲ * When ALS inop, increase RVR to 40, vis to ¼ mile.
****** When ALS inop, increase CAT AB RVR to 55, vis to 1 mile: CAT CDE vis to 1 ¼ miles.
† When ALS inop, increase CAT AB RVR to 55, vis to 1 mile: CAT CDE vis to 1 ¾ miles.

ALSF-1

MISSED APPROACH: Climb heading 315° to intercept the VOR/TAC CBM R-315 outbound to KREEK (CBM R-315/20) and hold. Maintain 4000.

ATIS★ 115.2 273.5	APP CON★ SE 134.55 350.3 SW 135.6 323.275 N 126.075 239.25	TOWER★ 126.65 379.925	GND CON★ 121.9 275.8	CLNC DEL★ 269.55
------------------------------------	---	--	---------------------------------------	-----------------------------------

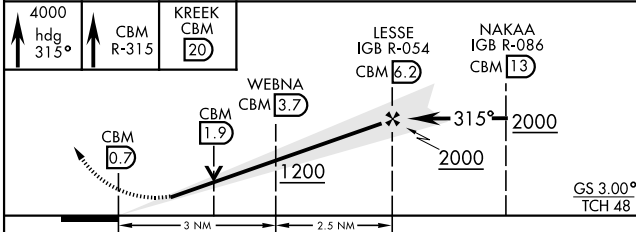
***** CAUTION:**
 Rwy centerlines separated by 1450', sidestep not for civil use.



899
 USAF Only: When VGSI inop, sidestep Rwy 31R authorized at night with aircrew command approval.

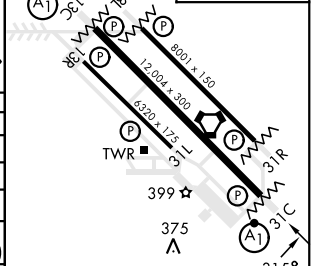
When sidestep/circling to Rwy 31R at night, operational VGSI required, remain on or above VGSI glidepath until threshold.

EMERG SAFE ALT 100 NM 3700



ELEV	218	TDZE 31C	213
		TDZE 31R	218

CATEGORY	A	B	C	D	E
S-ILS 31C**		413/24	200	(200-½)	
S-LOC 31C**	640/24	427 (500-½)	640/40	427 (500-¾)	
SIDESTEP RWY 31R***	640/55	422 (500-1)	640-1 ¼	422 (500-1 ¼)	
CIRCLING	700-1	720-1	740-1 ½	880-2	1240-3
	482 (500-1)	502 (600-1)	522 (600-1 ½)	662 (700-2)	1022(1100-3)
LOCAL ALTIMETER, WITHOUT LAST STEPDOWN FIX					
S-LOC 31C †	720/24	507 (600-½)	720/55	507 (600-1)	
SIDESTEP*** RWY 31R	760/55	542 (600-1)	760-1 ⅝	542 (600-1 ⅝)	
CIRCLING	760-1	542 (600-1)	760-1 ⅝	880-2	1240-3
			542 (600-1 ⅝)	662 (700-2)	1022(1100-3)



MIRL Rwy 13R-31L					
HIRL Rwy 13C-31C, 13L-31R					
FAF to MAP 5.5 NM					
Knots	60	90	120	150	180
Min:Sec	5:30	3:40	2:45	2:12	1:50

COLUMBUS, MISSISSIPPI
Amdt 2 23FEB23

33°39'N-88°27'W

COLUMBUS AFB (KCBM)

ILS or LOC Y RWY 31C

SC-4, 03 OCT 2024 to 31 OCT 2024

SC-4, 03 OCT 2024 to 31 OCT 2024