

COLUMBUS, MISSISSIPPI

# VOR/DME A

VORTAC CBM <b>115.2</b> Chan <b>99</b>	APCH CRS <b>090°</b>	Rwy Idg TDZE Arprt Elev <b>N/A</b> <b>N/A</b> <b>218</b>
--	-------------------------	--

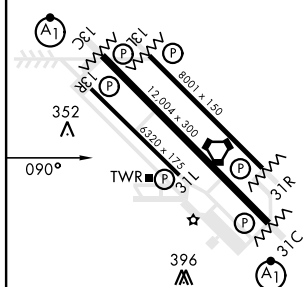
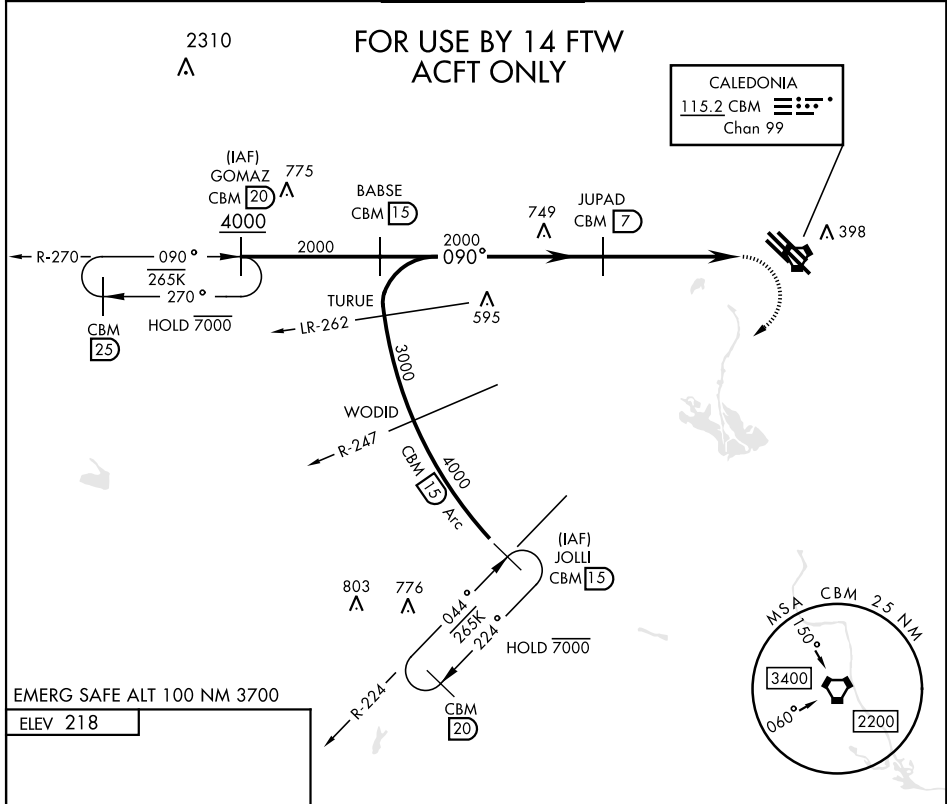
AL-91 [USAF]

COLUMBUS AFB (KCBM)

▼ When circling to Rwy 31R at night, operational VGSI required, remain on or above VGSI glidepath until threshold.

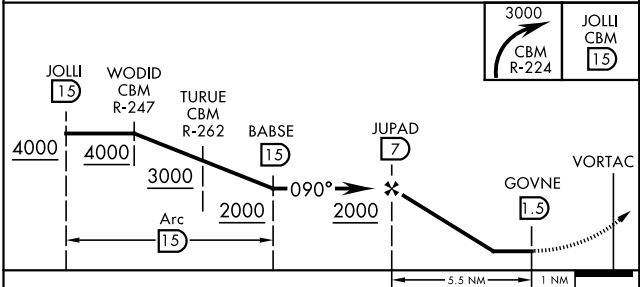
MISSED APPROACH: Climbing right turn to intercept the CBM R-224 outbound to JOLLI (CBM R-224/15) and hold. Maintain 3000.

ATIS ★ <b>115.2 273.5</b>	APP CON ★ <b>134.55 350.3</b> (SE) <b>135.6 323.275</b> (SW) <b>126.075 239.25</b> (N)	TOWER ★ <b>126.65 379.925</b>	GND CON ★ <b>121.9 275.8</b>	CLNC DEL ★ <b>269.55</b>
------------------------------	---	----------------------------------	---------------------------------	-----------------------------



EMERG SAFE ALT 100 NM 3700  
ELEV 218

MIRL Rwy 13R-31L  
HIRL Rwy 13C-31C, 13L-31R



CATEGORY	A	B	C
☑ CIRCLING	760-1	542 (600-1)	760-1½ 542 (600-1½)

COLUMBUS, MISSISSIPPI  
Amdt 6 21APR22

33°39'N-88°27'W

COLUMBUS AFB (KCBM)

# VOR/DME A

SC-4, 03 OCT 2024 to 31 OCT 2024

SC-4, 03 OCT 2024 to 31 OCT 2024