

DEL RIO, TEXAS

ILS or LOC/DME Y RWY 31C

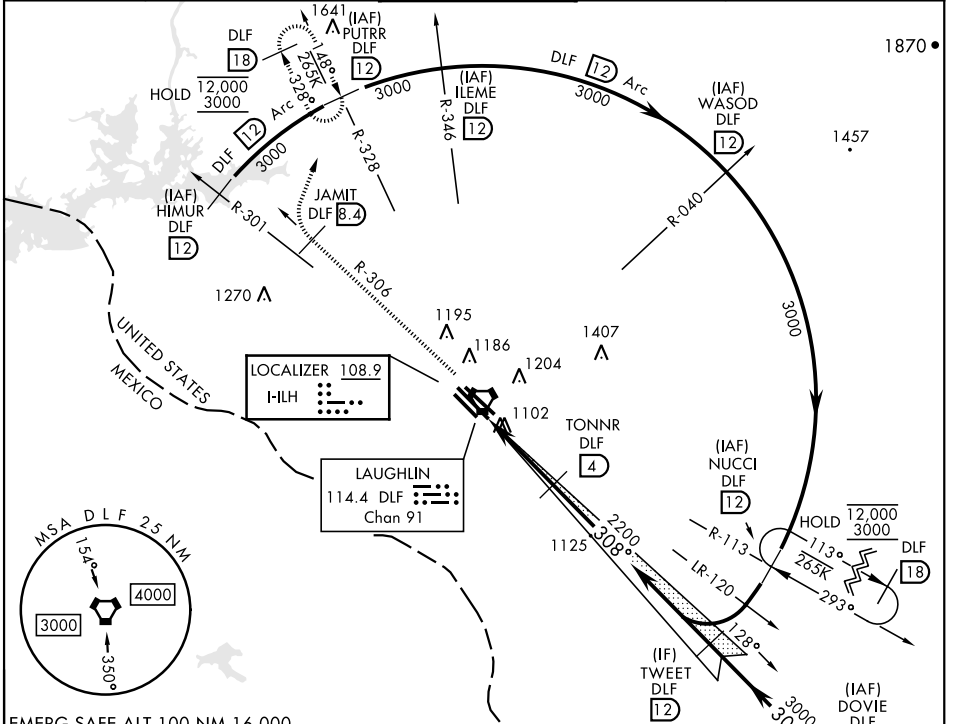
LOC I-ILH 108.9	APCH CRS 308°	Rwy Idg 8852 6282 8316	31C 1079	31L 1080	31R 1078
		TDZE 1079 1080 1078			
		Arprt Elev 1082			

AL-111 [USAF] LAUGHLIN AFB (KDLF)

* Circling W of Rwy 13R-31L not authorized.

MISSED APPROACH: Climb to 3000 on DLF VORTAC R-306 to 8.4 DME (JAMIT), then turn right to intercept DLF R-328 to 12 DME (PUTRR) and hold.

ATIS ★ 114.4 269.9	DEL RIO APP CON 119.6 259.1	TOWER ★ 125.2 307.375	GND CON 275.8	CLNC DEL 120.5 335.8
------------------------------	---------------------------------------	---------------------------------	-------------------------	--------------------------------



EMERG SAFE ALT 100 NM 16,000

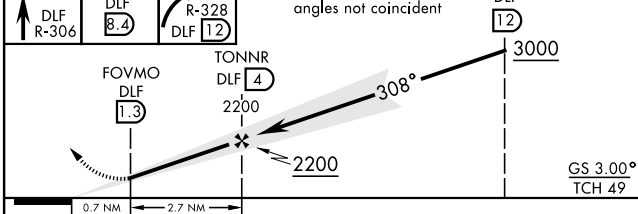
↑ DLF R-306

JAMIT DLF 8.4

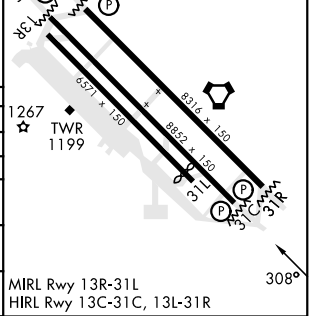
PUTRR R-328 DLF 12

VGSI and descent angles not coincident

TWEET DLF 12



ELEV 1082	TDZE 31C 1079
	TDZE 31L 1080
	TDZE 31R 1078
	Rwy 31L Idg 6282'



CATEGORY	A	B	C	D	E
S-ILS 31C		1279-3/4	200	(200-3/4)	
S-LOC 31C	1360-1	281 (300-1)		1360-7/8	281 (300-7/8)
SIDESTEP 31L	1360-1	280 (300-1)	1360-1 1/2	1360-2	280 (300-2)
			280 (300-1 1/2)		
SIDESTEP 31R	1380-1	302 (300-1)	1380-1 1/2	1380-2	302 (300-2)
			302 (300-1 1/2)		
CIRCLING*	1500-1	1540-1	1700-1 1/4	1700-2	1740-2 1/4
	418 (500-1)	458 (500-1)	618 (700-1 3/4)	618 (700-2)	658 (700-2 1/4)

DEL RIO, TEXAS 29°22'N-100°47'W LAUGHLIN AFB (KDLF)

Amdt 6 05OCT23

ILS or LOC/DME Y RWY 31C

SC-3, 03 OCT 2024 to 31 OCT 2024

SC-3, 03 OCT 2024 to 31 OCT 2024