

(WEBOX • WEBOX4)  
**WEBOX FOUR ARRIVAL**

ST-111 [USAF]

LAUGHLIN AFB  
 DEL RIO, TEXAS

ATIS ★ 114.4 269.9  
 DEL RIO APP CON  
 119.6 259.1  
 LAUGHLIN TOWER ★  
 125.2 307.375  
 GND CON  
 275.8

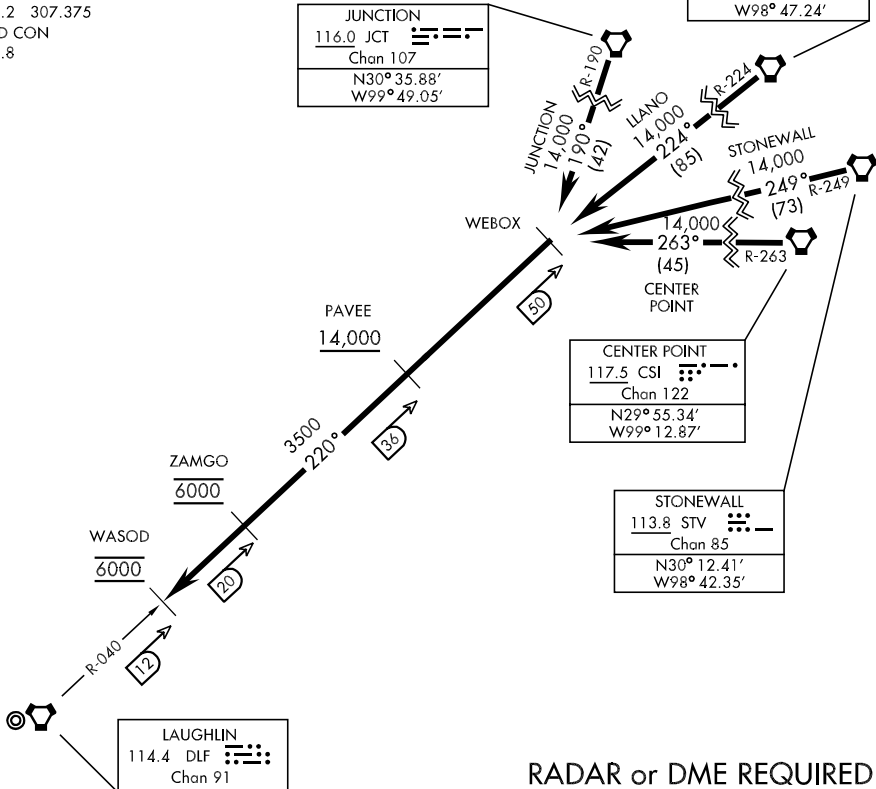
LLANO
108.2 LLO
Chan 19
N30° 47.78'
W98° 47.24'

JUNCTION
116.0 JCT
Chan 107
N30° 35.88'
W99° 49.05'

CENTER POINT
117.5 CSI
Chan 122
N29° 55.34'
W99° 12.87'

STONEWALL
113.8 STV
Chan 85
N30° 12.41'
W98° 42.35'

LAUGHLIN
114.4 DLF
Chan 91



SC-3, 03 OCT 2024 to 31 OCT 2024

SC-3, 03 OCT 2024 to 31 OCT 2024

**ARRIVAL ROUTE DESCRIPTION**

JUNCTION Transition (JCT.WEBOX4): From over JCT VORTAC via JCT R-190 to WEBOX. Thence...

LLANO Transition (LLO.WEBOX4): From over LLO VORTAC via LLO R-224 to WEBOX. Thence...

STONEWALL Transition (STV.WEBOX4): From over STV VORTAC via STV R-249 to WEBOX. Thence...

CENTER POINT Transition (CSI.WEBOX4): From over CSI VORTAC via CSI R-263 to WEBOX. Thence...

...From over DLF R-040/50 (WEBOX) via DLF R-040 to DLF R-040/12 (WASOD). Expect vectors for an instrument approach to runway in use.

**WEBOX FOUR ARRIVAL (WEBOX • WEBOX4)**

DEL RIO, TEXAS  
 LAUGHLIN AFB