

VOR/DME CEZ <b>114.35</b> Chan <b>90(Y)</b>	APP CRS <b>196°</b>	Rwy Idg TDZE <b>5913</b> Apt Elev <b>5918</b>	<b>7205</b>
---------------------------------------------------	------------------------	-----------------------------------------------------	-------------

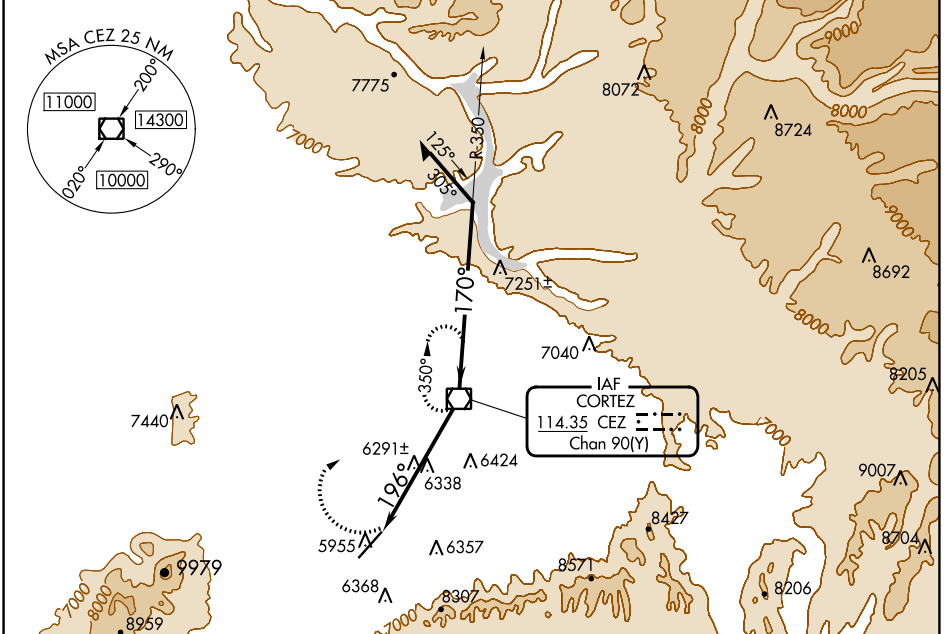
# VOR RWY 21

CORTEZ MUNI (C/EZ)

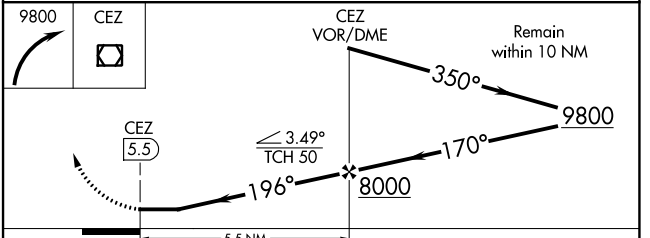
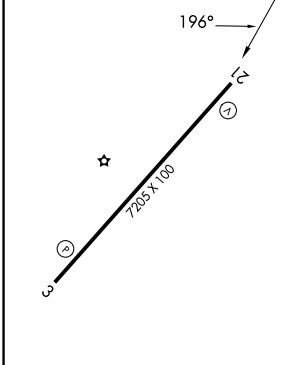
**CAUTION:** Highway lights located between facility and runway are aligned with approach area. Rwy 21 helicopter visibility reduction below 3/4 SM NA. Circling NA southeast of Rwy 3-21.

**MISSED APPROACH:** Climbing right turn to 9800 direct to CEZ VOR/DME and hold.

ASOS <b>135.625</b>	DENVER CENTER <b>118.575 348.7</b>	UNICOM <b>122.8 (CTAF) 0</b>
------------------------	---------------------------------------	---------------------------------



ELEV 5918	<b>D</b>	TDZE 5913
-----------	----------	-----------



REL Rws 3 and 21  
MIRL Rwy 3-21

FAF to MAP 5.5 NM

Knots	60	90	120	150	180
Min:Sec	5:30	3:40	2:45	2:12	1:50

CATEGORY	A	B	C	D
S-21	6660-1 747 (800-1)	6660-1 1/4 747 (800-1 1/4)	6660-2 747 (800-2)	6660-2 1/4 747 (800-2 1/4)
CIRCLING	6660-1 742 (800-1)	6680-1 1/4 762 (800-1 1/4)	6800-2 3/4 882 (900-2 3/4)	7060-3 1142 (1200-3)

SW-1, 03 OCT 2024 to 31 OCT 2024

SW-1, 03 OCT 2024 to 31 OCT 2024