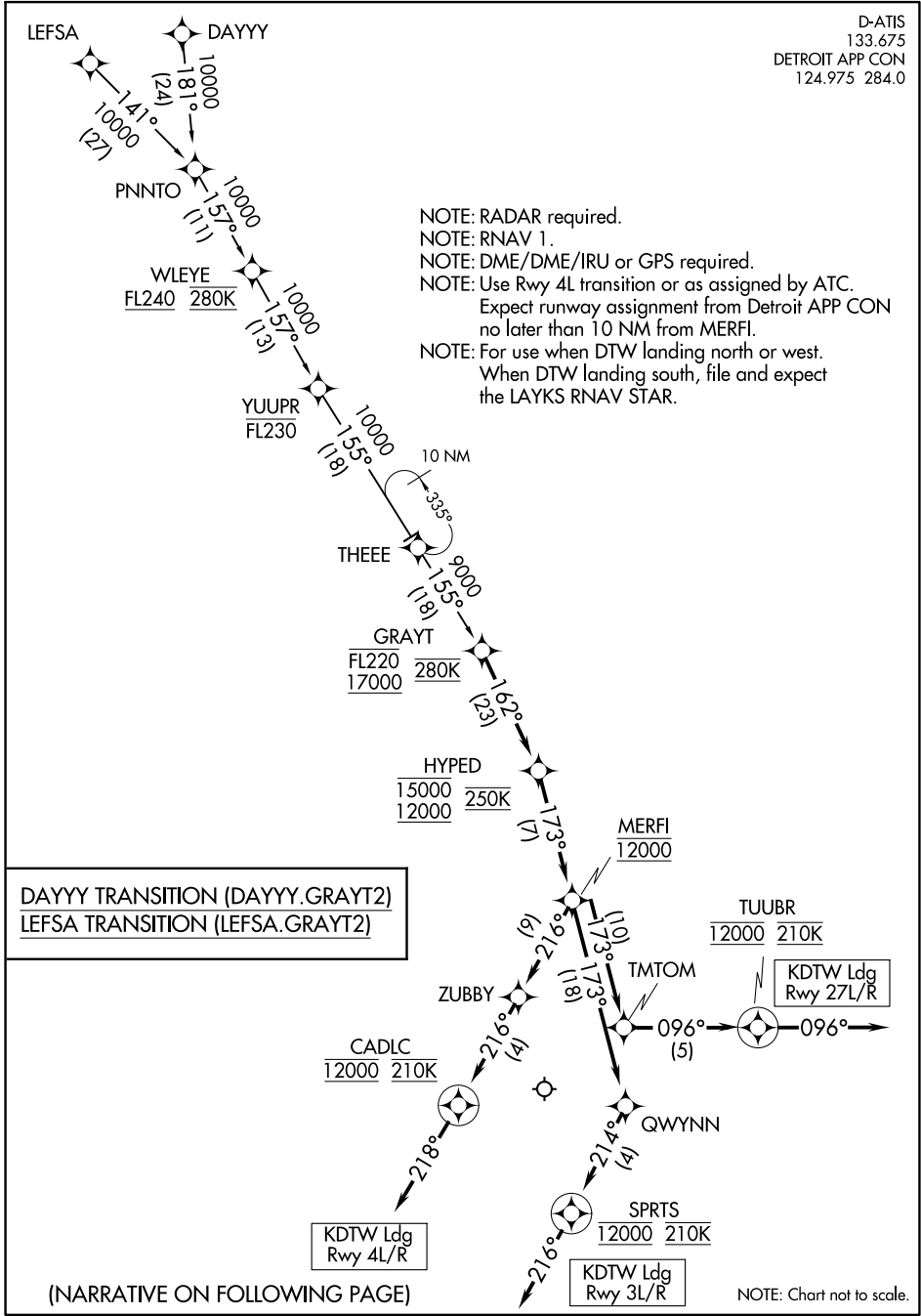


GRAYT TWO ARRIVAL (RNAV)

D-ATIS
133.675
DETROIT APP CON
124.975 284.0

- NOTE: RADAR required.
- NOTE: RNAV 1.
- NOTE: DME/DME/IRU or GPS required.
- NOTE: Use Rwy 4L transition or as assigned by ATC.
Expect runway assignment from Detroit APP CON no later than 10 NM from MERFI.
- NOTE: For use when DTW landing north or west.
When DTW landing south, file and expect the LAYKS RNAV STAR.



DAYYY TRANSITION (DAYYY.GRAYT2)
LEFSA TRANSITION (LEFSA.GRAYT2)

KDTW Ldg
Rwy 4L/R

KDTW Ldg
Rwy 27L/R

KDTW Ldg
Rwy 3L/R

NOTE: Chart not to scale.

(NARRATIVE ON FOLLOWING PAGE)

GRAYT TWO ARRIVAL (RNAV)

(GRAYT.GRAYT2) 10OCT19

EC-1, 03 OCT 2024 to 31 OCT 2024

EC-1, 03 OCT 2024 to 31 OCT 2024