

DETROIT, MICHIGAN

AL-119 (FAA)

# ILS PRM Z RWY 4L

## (CLOSE PARALLEL)

DETROIT METRO WAYNE COUNTY (DTW)

LOC/DME I-HJT <b>111.95</b> Chan <b>56 (Y)</b>	APP CRS <b>036°</b>	Rwy Idg TDZE Apt Elev <b>10000</b> <b>645</b> <b>645</b>
--	------------------------	---

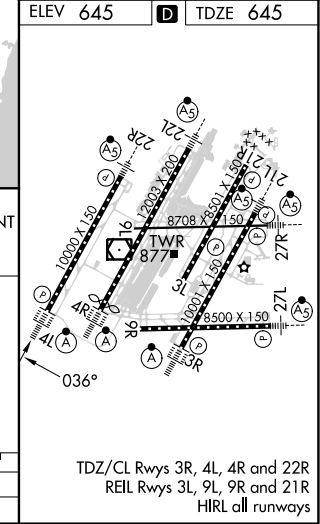
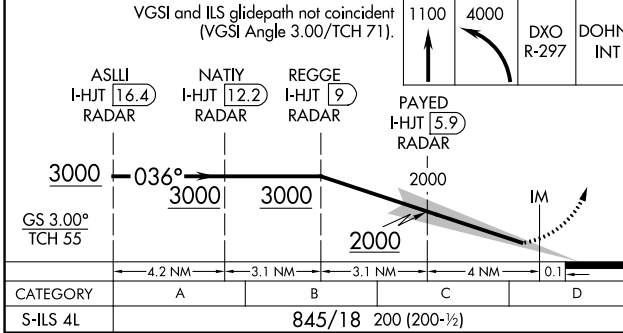
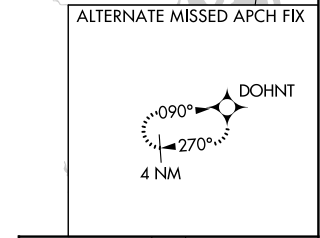
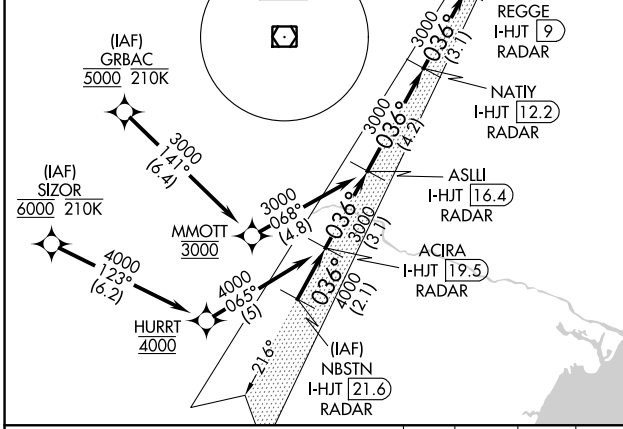
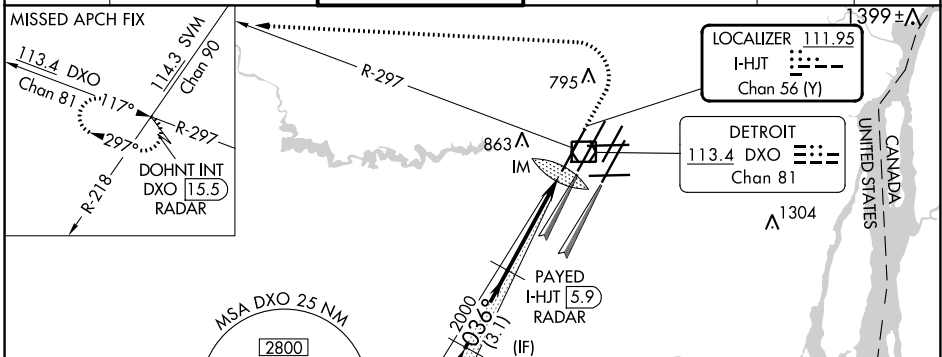
From GRBAC, SIZOR: RNAV 1-DME/DME/IRU or GPS required. Aircraft not DME/DME/IRU or GPS equipped - RADAR required for procedure entry. DME or RADAR required.

Simultaneous approach authorized. Use of FD or AP required during simultaneous operations. Dual VHF Comm required. See additional requirements on AAUP.

ALSF-2

MISSED APPROACH: Climb to 1100 then climbing left turn to 4000 on DXO VOR/DME R-297 to DOHNT INT/DXO 15.5 DME/RADAR and hold.

D-ATIS <b>133.675</b>	DETROIT APP CON <b>124.05 284.0</b>	METRO TOWER <b>135.0 317.725</b> <b>PRM 127.05</b>	GND CON <b>121.8 (NW) 119.45 (NE)</b> <b>132.725 (SW) 119.25 (SE)</b>	CLNC DEL <b>120.65</b>	CPDLC
--------------------------	--	--	---	---------------------------	-------



CATEGORY	A	B	C	D
S-ILS 4L	845/18 200 (200-½)			

DETROIT, MICHIGAN 42°13'N-83°21'W DETROIT METRO WAYNE COUNTY (DTW)

# ILS PRM Z RWY 4L (CLOSE PARALLEL)

EC-1, 03 OCT 2024 to 31 OCT 2024

EC-1, 03 OCT 2024 to 31 OCT 2024