

(MIGGY3.MIGGY) 24137

DETROIT METRO WAYNE COUNTY (DTW)

MIGGY THREE DEPARTURE (RNAV)

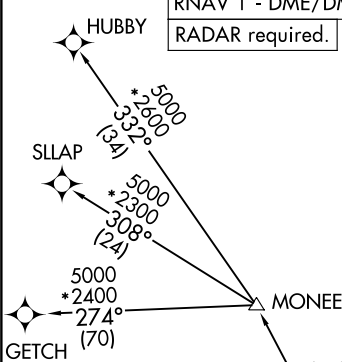
AL-119 (FAA)

DETROIT, MICHIGAN

RNAV 1 - DME/DME/IRU or GPS.
RADAR required.

TOP ALTITUDE:
17000

D-ATIS 118.125
CLNC DEL 120.65
CPDLC
GND CON
121.8 (NW) 119.45 (NE)
132.725 (SW) 119.25 (SE)
METRO TOWER
118.4 317.725 (Rwys 3L/R, 21L/R, 27R)
128.75 317.725 (Rwy 27L)
135.0 317.725 (Rwys 4L/R, 22L/R)
DETROIT DEP CON
125.525 284.0



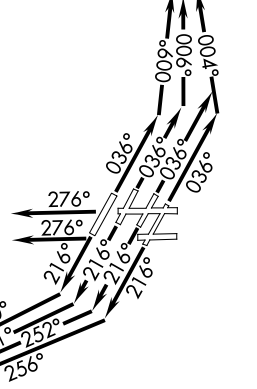
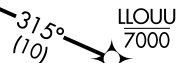
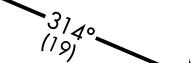
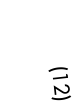
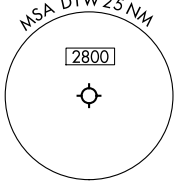
NOTE: Jet departures at/above 10000, maintain 280K until advised by ATC.

NOTE: GETCH TRANSITION: For use by KMKE area arrivals only, or as assigned by ATC.

TAKEOFF MINIMUMS:

Rwys 27L/R: Standard.

Rwys 3L/R, 4L/R, 21L/R, 22L/R: Standard with minimum climb of 500' per NM to 1146.



(CONTINUED ON FOLLOWING PAGE)

NOTE: Chart not to scale.

MIGGY THREE DEPARTURE (RNAV)

(MIGGY3.MIGGY) 16MAY24

DETROIT, MICHIGAN

DETROIT METRO WAYNE COUNTY (DTW)

EC-1, 03 OCT 2024 to 31 OCT 2024

EC-1, 03 OCT 2024 to 31 OCT 2024