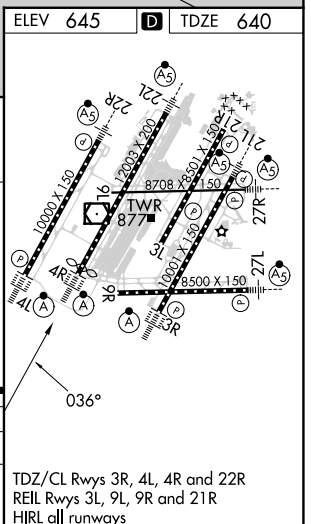
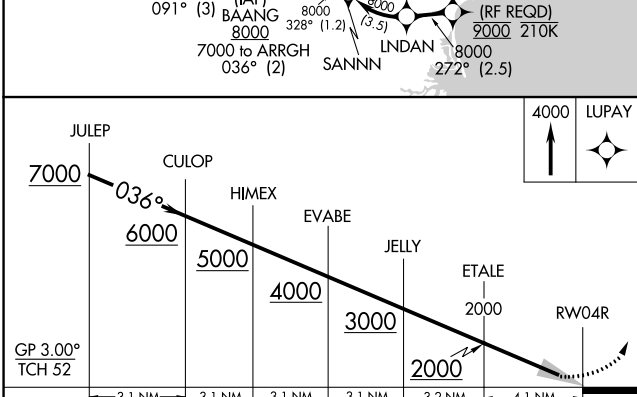
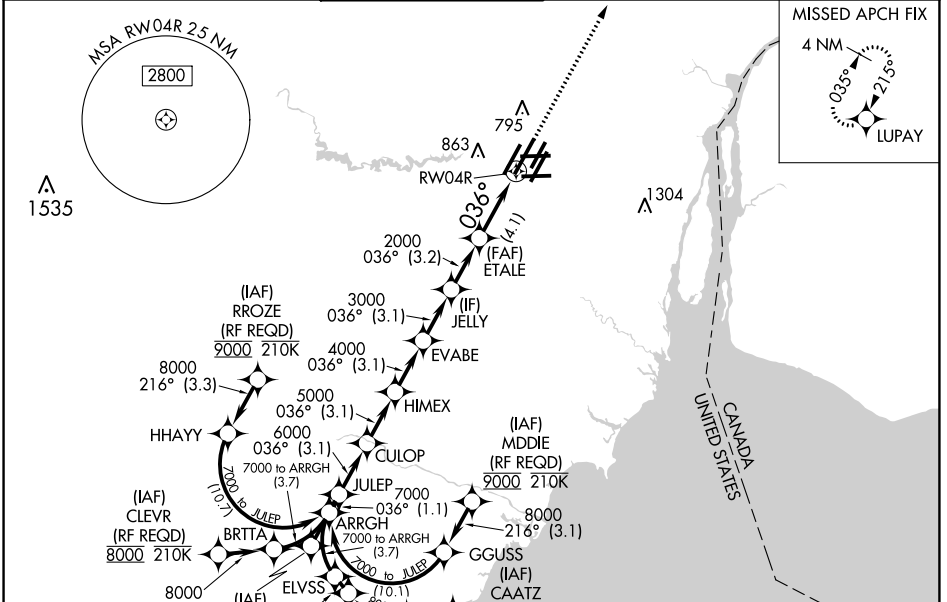


APP CRS	Rwy Idg	11494
036°	TDZE	640
	Apt Elev	645

RNAV (RNP) X RWY 4R

DETROIT METRO WAYNE COUNTY (DTW)

RNP AR APCH.		ALSF-2		MISSED APPROACH: Climb to 4000 direct LUPAY and hold.	
<p>▼ For uncompensated Baro-VNAV systems, procedure NA below -19°C (-2°F) or above 54°C (130°F). Simultaneous approach authorized.</p>					
D-ATIS	DETROIT APP CON	METRO TOWER	GND CON	CLNC DEL	CPDLC
133.675	124.05 284.0	128.125 317.725	121.8 (NW) 119.45 (NE) 132.725 (SW) 119.25 (SE)	120.65	



CATEGORY	A	B	C	D
RNP 0.30 DA	1031/35		391 (400- $\frac{1}{2}$)	

AUTHORIZATION REQUIRED

TDZ/CL Rwy 3R, 4L, 4R and 22R
 REIL Rwy 3L, 9L, 9R and 21R
 HIRL all runways

EC-1, 03 OCT 2024 to 31 OCT 2024

EC-1, 03 OCT 2024 to 31 OCT 2024