

WAAS CH 90544 W07A	APP CRS 070°	Rwy ldg 4700 TDZE 2583 Apt Elev 2592
--	------------------------	---

RNAV (GPS) RWY 7

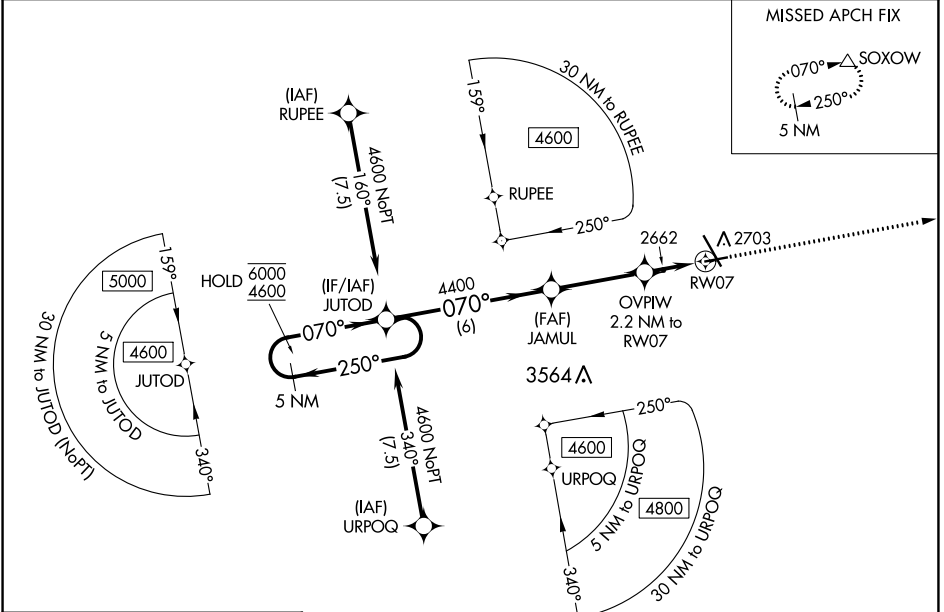
DICKINSON/THEODORE ROOSEVELT RGNL (DIK)

RNP APCH - GPS.

▼ Rwy 7 helicopter visibility reduction below 3/4 SM NA.
▲ For uncompensated Baro-VNAV systems, LNAV/VNAV NA below -26°C or above 54°C.

MISSED APPROACH: Climb to 4600 direct SOXOW and hold.

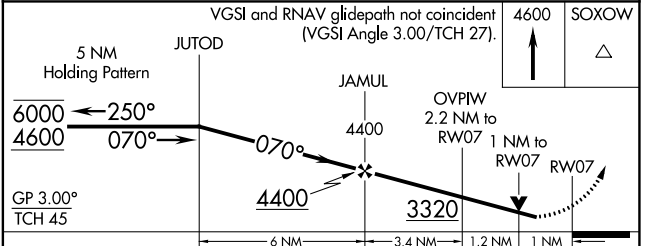
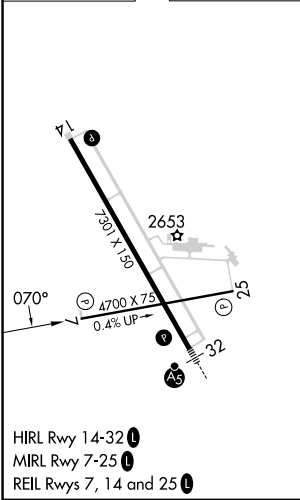
ASOS 118.375	MINNEAPOLIS CENTER 124.25 236.825	UNICOM 123.0 (CTAF) 0
------------------------	---	---------------------------------



NC-1, 03 OCT 2024 to 31 OCT 2024

NC-1, 03 OCT 2024 to 31 OCT 2024

ELEV 2592	D	TDZE 2583
------------------	----------	------------------



CATEGORY	A	B	C	D
LPV DA		2833-1	250 (300-1)	
LNAV/VNAV DA		2833-1	250 (300-1)	
LNAV MDA		2920-1	337 (400-1)	
CIRCLING	3060-1	468 (500-1)	3120-1½ 528 (600-1½)	3200-2 608 (700-2)