

# RNAV (GPS) Y RWY 17R

APCH CRS	Rwy Idg	<b>9217</b>
<b>163°</b>	TDZE	<b>1287</b>
	Arpt Elev	<b>1307</b>

AL-135 [USAF]

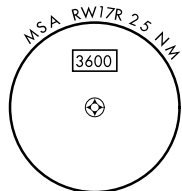
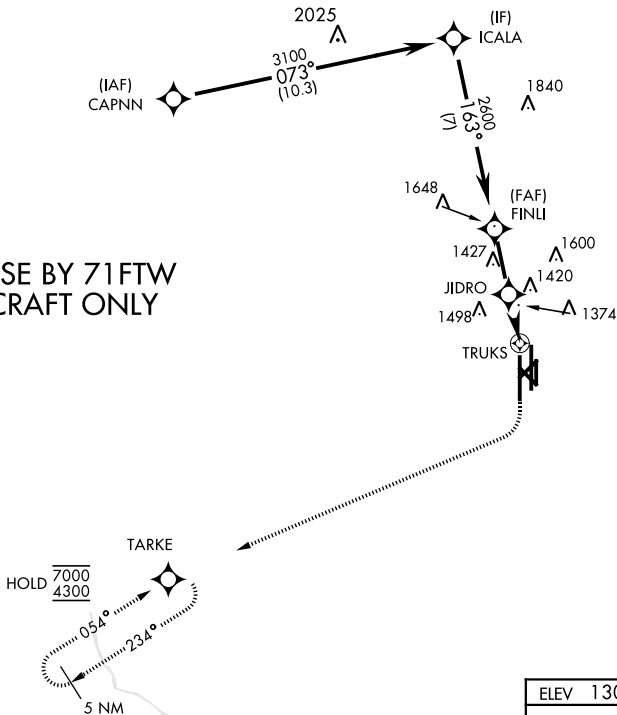
VANCE AFB (KEND)

RNP APCH	SALS
RADAR required	(A2)
* When ALS inop, increase vis to 1 mile. Circling visibility reduction by helicopters not authorized.	

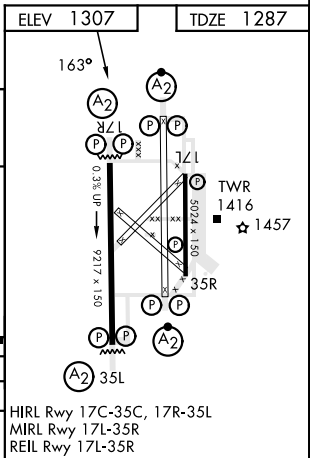
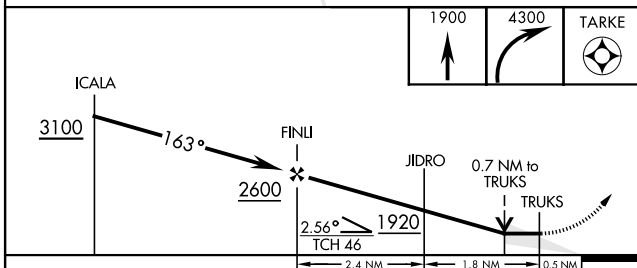
MISSED APPROACH: Climb to 1900, then climbing right turn to 4300 direct TARKE and hold.

ATIS ★	APP CON	TOWER ★	GND CON	CLNC DEL
<b>115.4 263.15</b>	<b>125.45 388.2 (E)</b> <b>126.75 346.325 (W)</b>	<b>124.05 259.1</b>	<b>121.675 289.4</b>	<b>225.4</b>

### FOR USE BY 71FTW AIRCRAFT ONLY



EMERG SAFE ALT 100 NM 4500



CATEGORY	A	B	C	D	E
LNAV MDA *	1640- <sup>3</sup> / <sub>4</sub> 353 (400- <sup>3</sup> / <sub>4</sub> )				
CIRCLING	1760-1 453 (500-1)	1800-1 <sup>1</sup> / <sub>2</sub> 493 (500-1 <sup>1</sup> / <sub>2</sub> )	1900-2 593 (600-2)	2300-3 993 (1000-3)	

HIRL Rwy 17C-35C, 17R-35L  
 MIRL Rwy 17L-35R  
 REIL Rwy 17L-35R

# RNAV (GPS) Y RWY 17R

SC-1, 03 OCT 2024 to 31 OCT 2024

SC-1, 03 OCT 2024 to 31 OCT 2024