

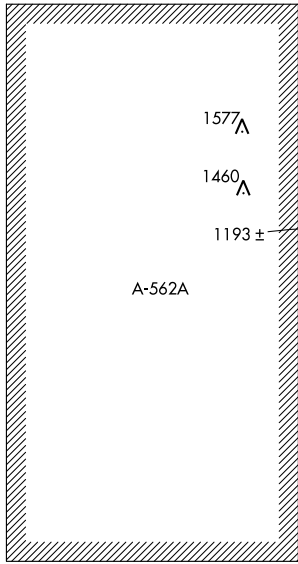
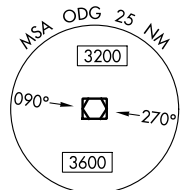
VOR/DME ODG <b>109.0</b> Chan 27	APP CRS <b>357°</b>	Rwy Idg <b>8002</b> TDZE <b>1147</b> Apt Elev <b>1167</b>
--	------------------------	---

# VOR RWY 35

ENID WOODRING RGNL (WDG)

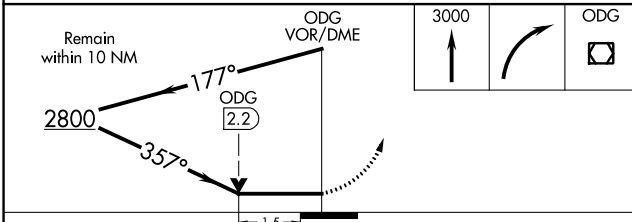
<p>Circling Rwy 13 NA at night.</p>	<p>MALS</p>	<p>MISSED APPROACH: Climb to 3000 then right turn direct ODG VOR/DME and hold.</p>	
			<p>AWOS-3PT <b>123.725</b></p>

△ 2037

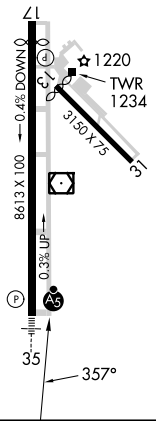



SC-1, 03 OCT 2024 to 31 OCT 2024

SC-1, 03 OCT 2024 to 31 OCT 2024



ELEV 1167		TDZE 1147
MIRL Rwy 17-35		
REIL Rwy 17		



CATEGORY	A	B	C	D
S-35	1680-1/2	533 (600-1/2)	1680-1	533 (600-1)
CIRCLING	1760-1	593 (600-1)	1820-1 3/4 653 (700-1 3/4)	1880-2 1/4 713 (800-2 1/4)