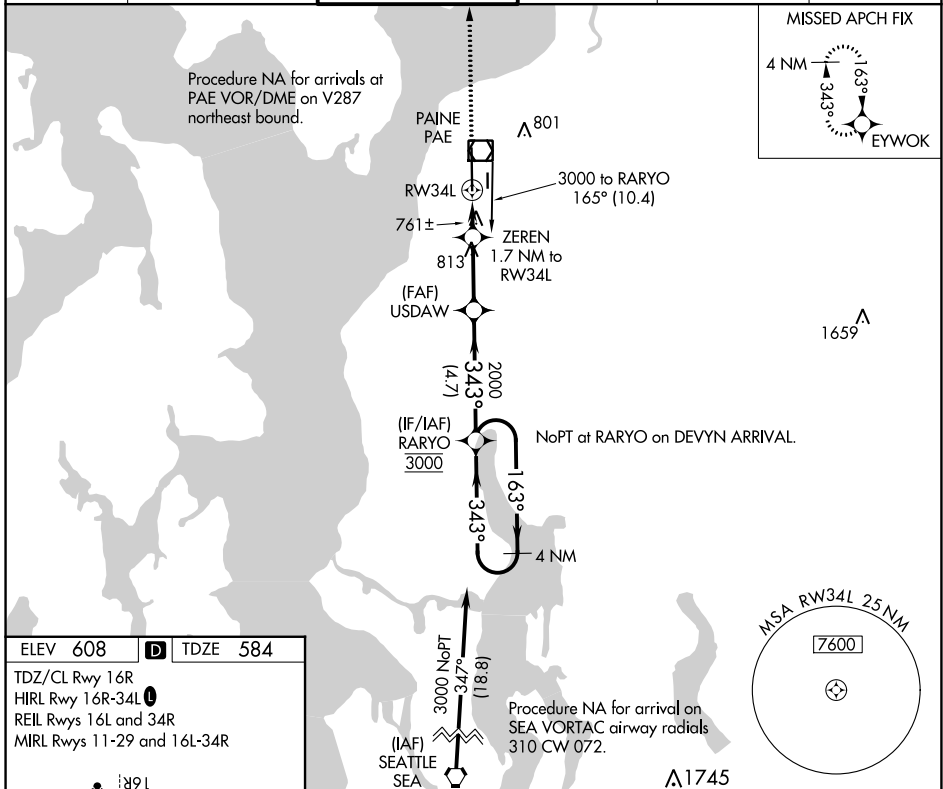


APP CRS	Rwy Idg	9010
343°	TDZE	584
	Apt Elev	608

RNAV (GPS) RWY 34L

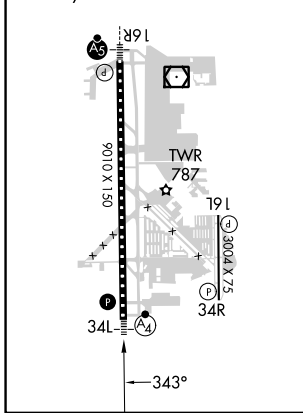
SEATTLE PAINE FLD INTL (P.A.E.)

<p>▼ Circling Rwy 34R NA at night. Rwy 34L helicopter visibility reduction below 3/4 SM NA. DME/DME RNP-0.3 NA.</p>		<p>MALSF</p>	<p>MISSED APPROACH: Climb to 3000 direct EYWOK and hold.</p>		
ATIS	SEATTLE APP CON	PAINE TOWER *	GND CON	CLNC DEL	UNICOM
128.65	128.5 306.9	132.95 (CTAF) 0 256.7	121.8 339.8	127.175	122.95



ELEV 608	D	TDZE 584
----------	----------	----------

TDZ/CL Rwy 16R
HIRL Rwy 16R-34L
REIL Rws 16L and 34R
MIRL Rws 11-29 and 16L-34R



3000	EYWOK	VGSI and descent angles not coincident (VGSI Angle 3.00/TCH 75).			
		ZEREN 1.7 NM to RW34L	USDAW	RARYO 4 NM Holding Pattern	
		1.2 NM to RW34L	1160	163° → 3000	← 343° 3000
		1.2 NM	0.5 NM	2.6 NM	4.7 NM
CATEGORY	A	B	C	D	
LNAV MDA	1020-3/4	436 (500-3/4)	1020-1	436 (500-1)	
C CIRCLING	1100-1	492 (500-1)	1120-1 1/2 512 (600-1 1/2)	1160-2 552 (600-2)	

NW-1, 03 OCT 2024 to 31 OCT 2024

NW-1, 03 OCT 2024 to 31 OCT 2024