


WAAS CH 61129 W16A	APP CRS 163°	Rwy Idg TDZE Apt Elev	9010 570 608
----------------------------------------	------------------------	-----------------------------	-----------------------------------------

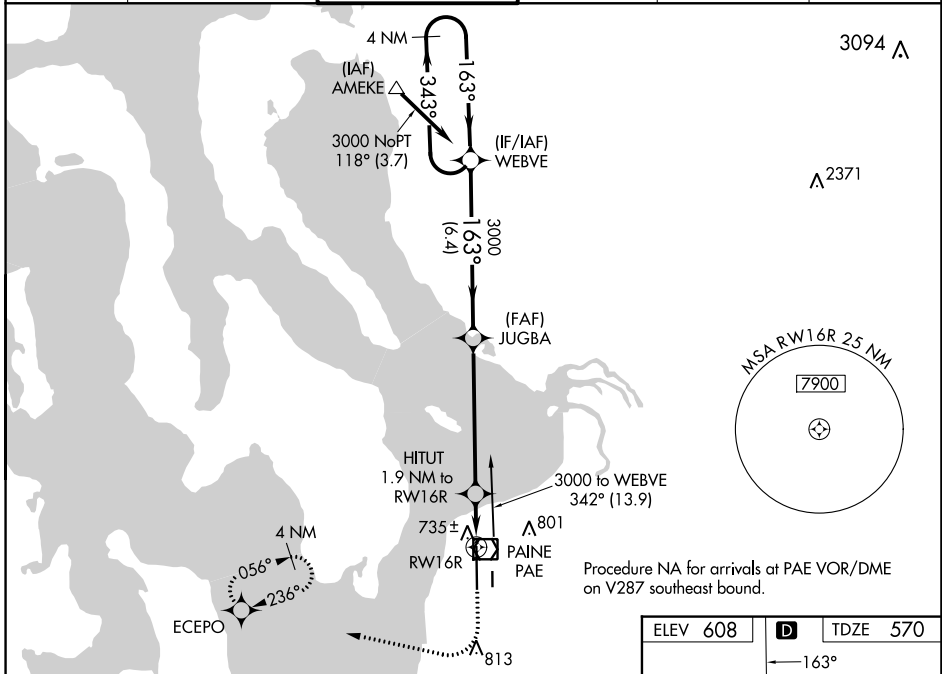
RNAV (GPS) Z RWY 16R

SEATTLE PAINE FLD INTL (P.A.E.)

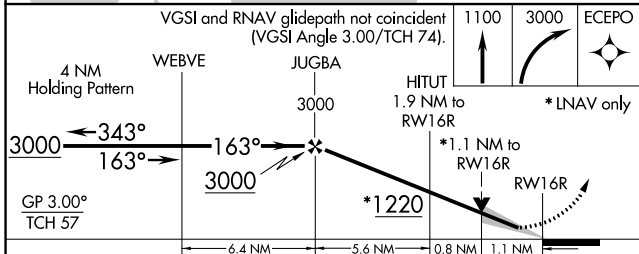
▽ For uncompensated Baro-VNAV systems, LNAV/VNAV NA below -5°C (23°F) or above 54°C (130°F). Circling Rwy 34R NA at night. DME/DME RNP-0.3 NA.

MALSR
 MISSED APPROACH: (Do not exceed 240K until ECEPO) Climb to 1100 then climbing right turn to 3000 direct ECEPO and hold, continue climb-in-hold to 3000.

ATIS 128.65	SEATTLE APP CON 128.5 306.9	PAINE TOWER * 132.95 (CTAF) 0 256.7	GND CON 121.8 339.8	CLNC DEL 127.175	UNICOM 122.95
-----------------------	---------------------------------------	-----------------------------------------------	-------------------------------	----------------------------	-------------------------



Procedure NA for arrivals at PAE VOR/DME on V287 southeast bound.



ELEV 608	D	TDZE 570
----------	----------	----------

TDZ/CL Rwy 16R
HIRL Rwy 16R-34L
REIL Rwys 16L and 34R
MIRL Rws 11-29 and 16L-34R

CATEGORY	A	B	C	D
LPV DA		770/18	200 (200-½)	
LNAV/VNAV DA		913/30	343 (400-⅝)	
LNAV MDA	1000/24	430 (400-½)	1000/40	430 (400-¾)
C CIRCLING	1100-1	492 (500-1)	1120-1½ 512 (600-1½)	1160-2 552 (600-2)

NW-1, 03 OCT 2024 to 31 OCT 2024

NW-1, 03 OCT 2024 to 31 OCT 2024