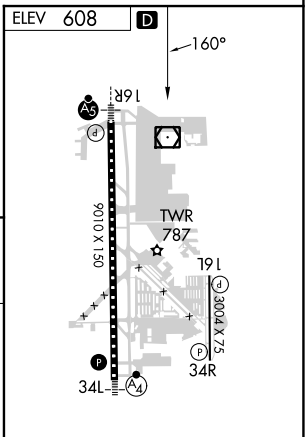
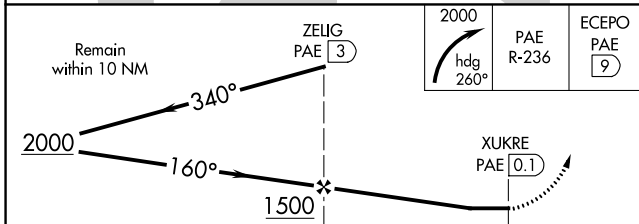
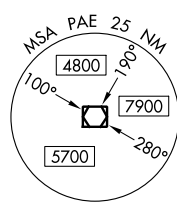
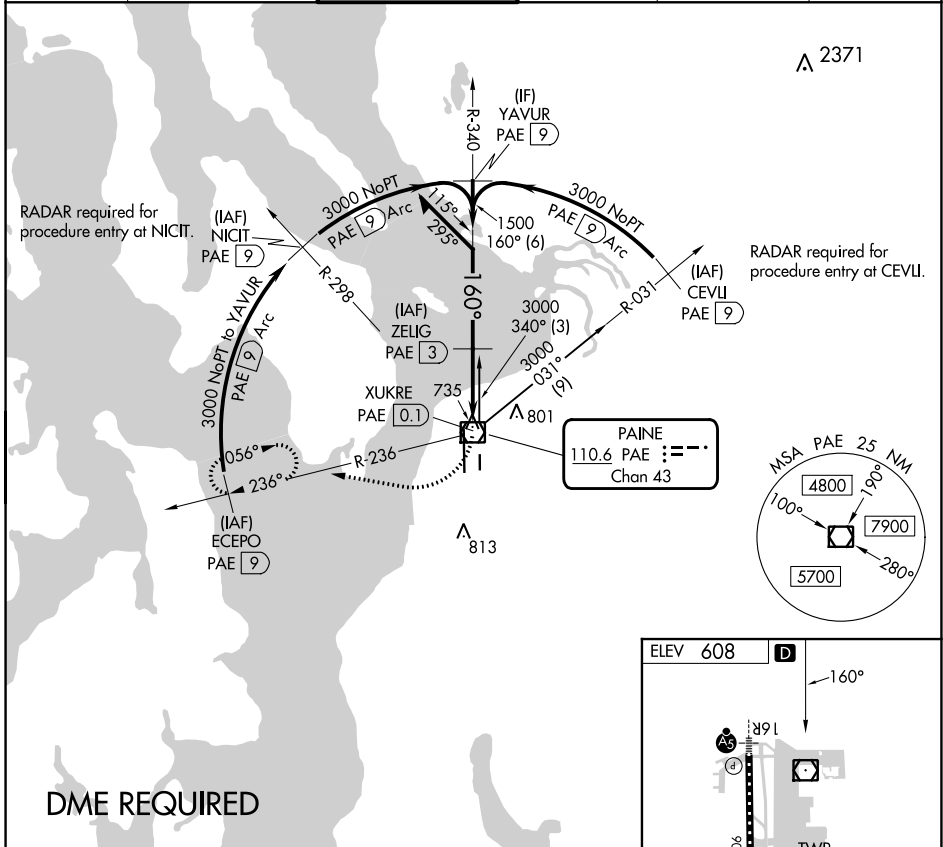


VOR/DME PAE 110.6 Chan 43	APP CRS 160°	Rwy Idg TDZE Apt Elev	N/A N/A 608
---	------------------------	-----------------------------	--

VOR-A
SEATTLE PAINE FLD INTL (PAE)

▼	Circling Rwy 34R NA at night. DME required.	MISSED APPROACH: Climbing right turn to 2000 on heading 260° and PAE VOR/DME R-236 to ECEPO/PAE 9 DME and hold.
----------	--	---

ATIS 128.65	SEATTLE APP CON 128.5 306.9	PAINE TOWER ★ 132.95 (CTAF) 0 256.7	GND CON 121.8 339.8	CLNC DEL 127.175	UNICOM 122.95
-----------------------	---------------------------------------	--	-------------------------------	----------------------------	-------------------------



CATEGORY	A	B	C	D
C CIRCLING	1100-1	492 (500-1)	1120-1½ 512 (600-1½)	1160-2 552 (600-2)

TDZ/CL Rwy 16R
HIRL Rwy 16R-34L **0**
REIL Rws 16L and 34R
MIRL Rws 11-29 and 16L-34R

NW-1, 03 OCT 2024 to 31 OCT 2024

NW-1, 03 OCT 2024 to 31 OCT 2024