

VOR/DME FBR 114.45 Chan 91 (Y)	APP CRS 215°	Rwy Idg TDZE Apt Elev	6404 7018 7038
--	------------------------	-----------------------------	---

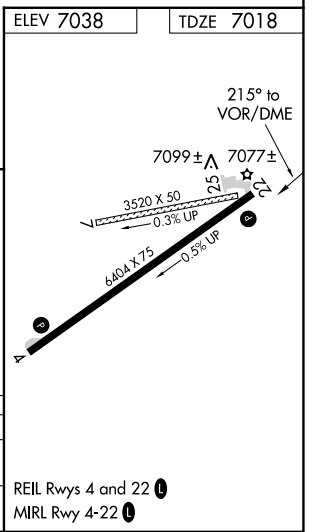
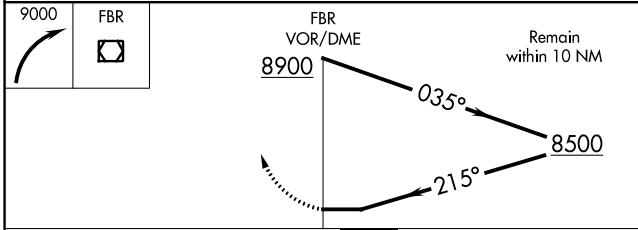
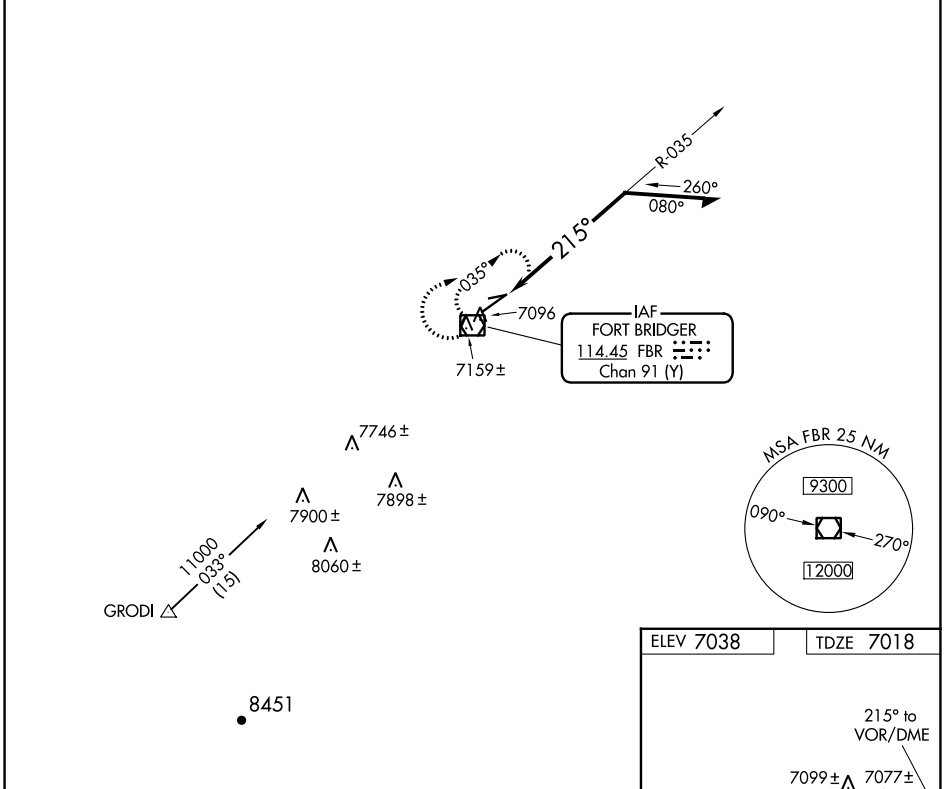
VOR RWY 22

FORT BRIDGER (FBR)

⚠ NA Circling NA to Rwys 7 and 25. When local altimeter setting not received, use Evanston altimeter setting and increase all MDAs 100 feet, increase S-22 Cats C and D and Circling Cat C visibility ¼ SM, and Circling Cat D visibility ½ SM.

MISSED APPROACH:
Climbing right turn to 9000 in FBR VOR/DME holding pattern.

AWOS-3PT 118.8	SALT LAKE CENTER 124.35 353.5	UNICOM 122.8 (CTAF)
--------------------------	---	-------------------------------



CATEGORY	A	B	C	D
S-22	7440-1	422 (500-1)	7440-1 ¼	422 (500-1 ¼)
C CIRCLING	7480-1 442 (500-1)	7500-1 462 (500-1)	7660-1 ¾ 622 (700-1 ¾)	7680-2 642 (700-2)

NW-1, 03 OCT 2024 to 31 OCT 2024

NW-1, 03 OCT 2024 to 31 OCT 2024