

VORTAC RSW 114.15 Chan 88(Y)	APP CRS 129°	Rwy Idg 4297 TDZE 15 Apt Elev 17
--	------------------------	---

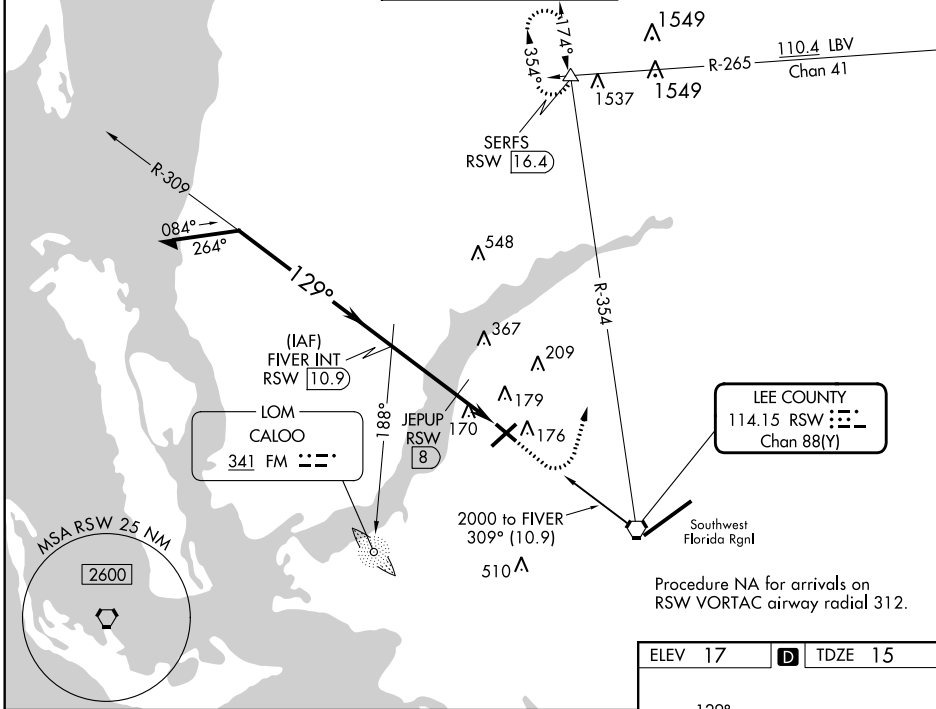
VOR RWY 13

PAGE FLD (FMY)

ADF or DME required.
 ▼ When Circling to Rwy 31 at night, operational VGSI required, remain on or above VGSI glidepath until threshold.

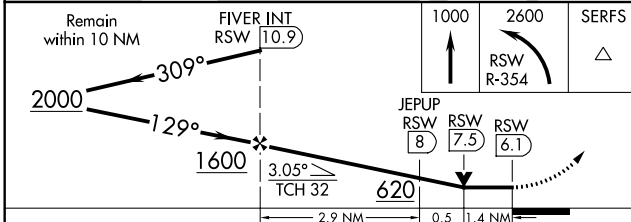
MISSED APPROACH: Climb to 1000 then climbing left turn to 2600 on RSW VORTAC R-354 to SERFS INT/RSW 16.4 DME and hold.

ATIS 123.725	FORT MYERS APP CON ★ 125.15 306.2 (Rwys 5, 13) 126.8 306.2 (Rwys 23, 31)	PAGE TOWER ★ 119.0 (CTAF) 306.95	GND CON 121.7	CLNC DEL 121.7
------------------------	--	---	-------------------------	--------------------------

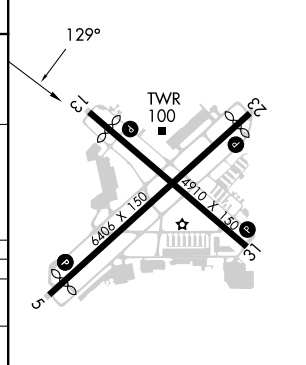


SE-3, 03 OCT 2024 to 31 OCT 2024

SE-3, 03 OCT 2024 to 31 OCT 2024



ELEV 17	TDZE 15
---------	---------



CATEGORY	A	B	C	D
S-13	620-1	605 (700-1)	620-1 ³ / ₄	605 (700-1 ³ / ₄)
C CIRCLING	620-1	603 (700-1)	620-1 ³ / ₄ 603 (700-1 ³ / ₄)	680-2 663 (700-2)
JEPUP FIX MINIMUMS				
S-13	480-1	465 (500-1)	480-1 ³ / ₈	465 (500-1 ³ / ₈)
C CIRCLING	540-1	523 (600-1)	600-1 ¹ / ₂ 583 (600-1 ¹ / ₂)	680-2 663 (700-2)

REIL Rwys 5, 13, 23 and 31
 MIRL Rwy 5-23 and 13-31

FAF to MAP 4.8 NM

Knots	60	90	120	150	180
Min:Sec	4:48	3:12	2:24	1:55	1:36