

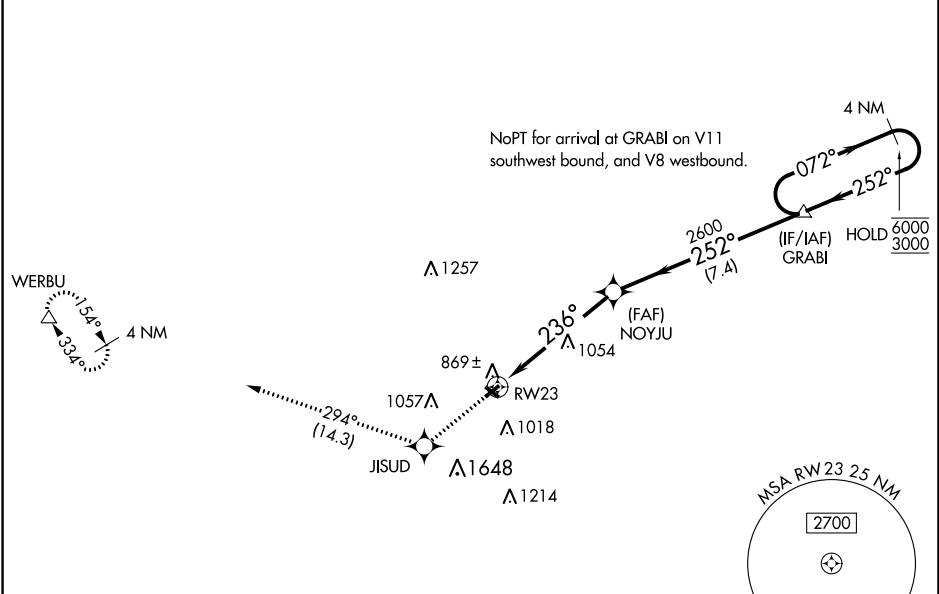
WAAS CH 65738 W23A	APP CRS 236°	Rwy Idg TDZE 834 Apt Elev 836	3035 834 836
--	------------------------	---	---

RNAV (GPS) RWY 23

SMITH FLD (SMD)

RNP APCH.	<p>Procedure NA at night. Rwy 23 helicopter visibility reduction below 1 SM NA. When local altimeter setting not received, use Fort Wayne Intl altimeter setting and increase all MDA 40 feet and LP and LNAV Cat C visibility 1/8 SM.</p>	<p>MISSED APPROACH: Climb to 2700 direct JISUD and on track 294° to WERBU and hold.</p>
-----------	--	---

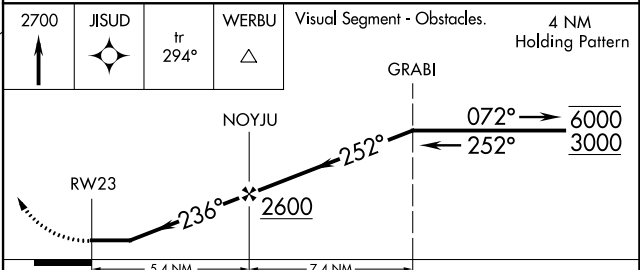
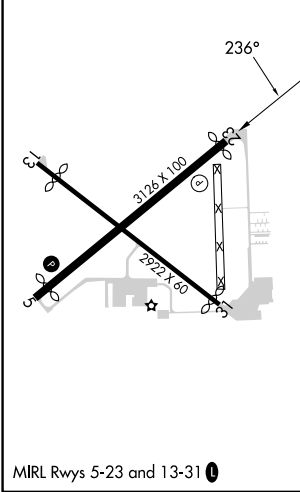
AWOS-3 124.55	FORT WAYNE APP CON 127.2 284.6	UNICOM 122.8 (CTAF)
-------------------------	--	-------------------------------



EC-2, 03 OCT 2024 to 31 OCT 2024

EC-2, 03 OCT 2024 to 31 OCT 2024

ELEV 836	TDZE 834
----------	----------



CATEGORY	A	B	C	D
LP MDA	1360-1	526 (600-1)	1360-1½ 526 (600-1½)	NA
LNAV MDA	1400-1	566 (600-1)	1400-1½ 566 (600-1½)	NA
C CIRCLING	1400-1	564 (600-1)	1940-3 1104 (1200-3)	NA