

LOC/DME I-SXH <b>108.95</b> Chan 26(Y)	APP CRS <b>093°</b>	Rwy Idg TDZE <b>669</b> Apt Elev <b>680</b>
--	------------------------	---

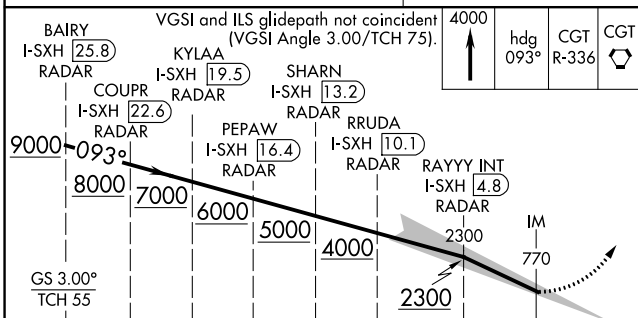
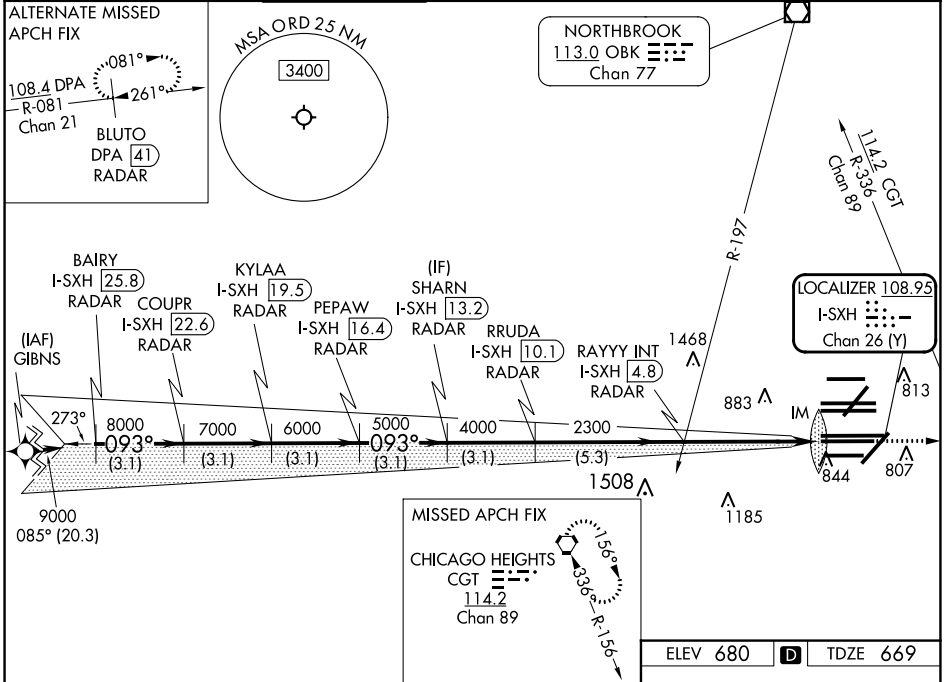
# ILS RWY 10C (CAT II & III)

CHICAGO O'HARE INTL (ORD)

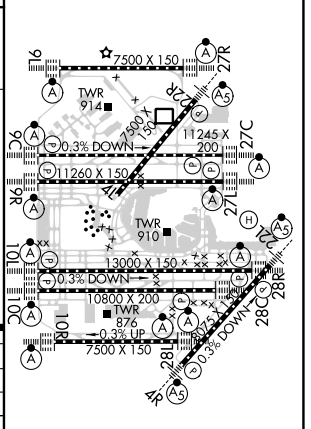
From GIBNS: RNAV-1 GPS required.  
 RNAV 1-GPS or RADAR required for procedure entry. DME or RADAR required.  
 Simultaneous approach authorized. CAT II: RVR 1000 authorized with specific OPSPEC, MSPEC, or LOA approval and use of autoland or HUD to touchdown.

ALSF-2  
 MISSED APPROACH: Climb to 4000 on heading 093° and CGT VORTAC R-336 to CGT VORTAC and hold.

D-ATIS <b>135.4</b> <b>282.225</b>	CHICAGO APP CON <b>119.0 292.125</b>	O'HARE TOWER <b>120.75 348.0</b>	GND CON (TWR CENTER) <b>124.125</b> <b>118.05</b> (TWR NORTH) <b>226.675</b> (TWR SOUTH) (ALL TWRs)	(TWR CENTER) <b>121.75</b> (OBND) <b>121.9</b> (IBND)	CLNC DEL <b>121.6</b>	CPDLC
--	---	-------------------------------------	---	---	--------------------------	-------



ELEV 680	TDZE 669
----------	----------



CATEGORY	A	B	C	D
S-ILS 10C	CAT II RA 102/12 100 DA 769			
S-ILS 10C	CAT III RVR 06			

**CATEGORY II and III ILS - SPECIAL AIRCREW & AIRCRAFT CERTIFICATION REQUIRED**

HIRL all Rwys  
 TDZ/CL all Rwys except 4L

EC-3, 03 OCT 2024 to 31 OCT 2024

EC-3, 03 OCT 2024 to 31 OCT 2024