

LOC/DME I-MED <b>111.1</b> Chan 48	APP CRS <b>093°</b>	Rwy Idg <b>12246</b> TDZE <b>672</b> Apt Elev <b>680</b>
--	------------------------	--

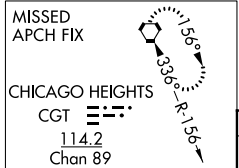
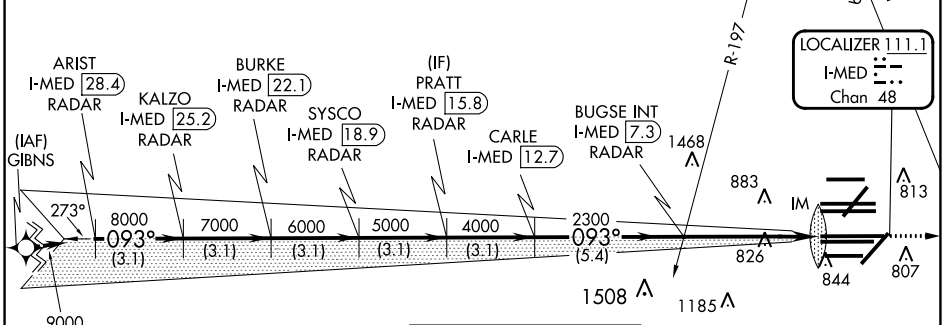
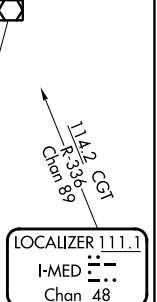
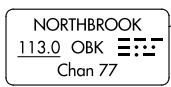
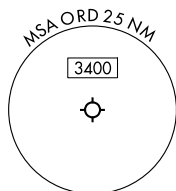
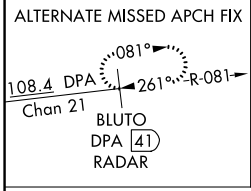
# ILS RWY 10L (SA CAT I)

CHICAGO O'HARE INTL (ORD)

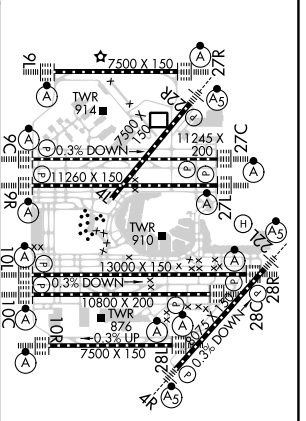
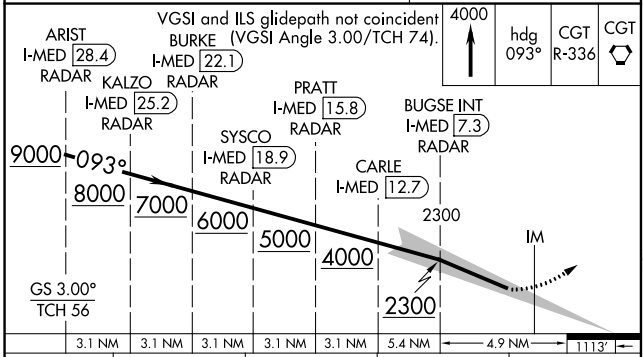
From GIBNS: RNAV-1 GPS required.  
 RNAV 1-GPS or RADAR required for procedure entry. DME or RADAR required.  
 Simultaneous approach authorized. Requires specific OPSPEC, MSPEC, or LOA approval and use of HUD to DH.

ALSF-2  
 MISSED APPROACH: Climb to 4000 on heading 093° and CGT VORTAC R-336 to CGT VORTAC and hold.

D-ATIS <b>135.4</b> <b>282.225</b>	CHICAGO APP CON <b>119.0</b> <b>292.125</b>	O'HARE TOWER <b>132.7</b> <b>348.0</b>	GND CON (TWR CENTER) <b>124.125</b> (TWR NORTH) <b>118.05</b> (TWR SOUTH) <b>226.675</b> (ALL TWRs)	(TWR CENTER) <b>121.75</b> (OBND) <b>121.9</b> (IBND)	CLNC DEL <b>121.6</b>	CPDLC
--	--	---	--	---	--------------------------	-------



ELEV 680	TDZE 672
----------	----------



3.1 NM	3.1 NM	3.1 NM	3.1 NM	3.1 NM	5.4 NM	4.9 NM	1113'
CATEGORY	A		B		C	D	
S-ILS 10L	RA 162/14		150 DA 822				

**SA CATEGORY I ILS - SPECIAL AIRCREW & AIRCRAFT CERTIFICATION REQUIRED**

HIRL all Rwys  
 TDZ/CL all Rwys except 4L

EC-3, 03 OCT 2024 to 31 OCT 2024

EC-3, 03 OCT 2024 to 31 OCT 2024