

LOC/DME I-IAC 110.5 Chan 42	APP CRS 273°	Rwy ldg 11260 TDZE 654 Apt Elev 680
---	------------------------	--

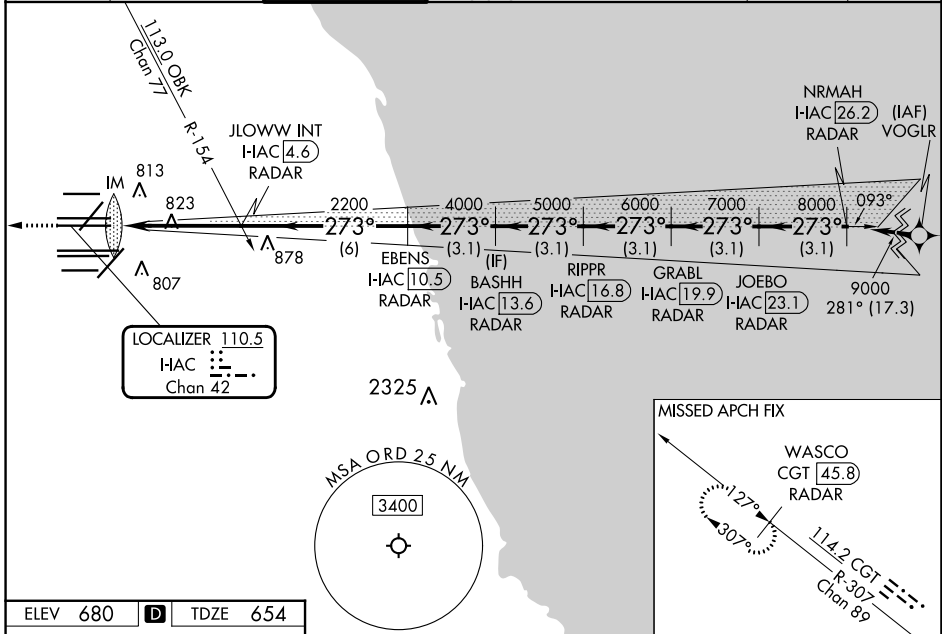
ILS RWY 27L (SA CAT I)

CHICAGO O'HARE INTL (ORD)

RNP APCH-GPS from VOGRL.
 Aircraft not GPS equipped - RADAR required for procedure entry. DME or RADAR required.
 Simultaneous approach authorized.
 Requires specific OPSPEC, MSPEC, or LOA approval.

ALSf-2
 MISSED APPROACH: Climb to 1200 then climb to 4000 on heading 265° and on CGT VORTAC R-307 to WASCO/CGT 45.8 DME/RADAR and hold.

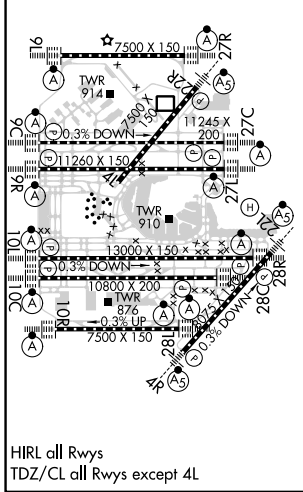
D-ATIS 135.4 282.225	CHICAGO APP CON 119.0 292.125	O'HARE TOWER 126.9 348.0	GND CON (TWR CENTER) 124.125 (TWR NORTH) 118.05 (TWR SOUTH) 226.675 (ALL TWRs)	(TWR CENTER) 121.75 (OBND) 121.9 (IBND)	CLNC DEL 121.6	CPDLC
--	---	------------------------------------	--	---	--------------------------	-------



EC-3, 03 OCT 2024 to 31 OCT 2024

EC-3, 03 OCT 2024 to 31 OCT 2024

ELEV 680	D	TDZE 654
-----------------	----------	-----------------



1200	4000	CGT R-307	WASCO CGT 45.8 RADAR	VGSI and ILS glidepath not coincident (VGSI Angle 3.00/TCH 77).
hdg 265°				
JLOWW INT I-IAC 4.6 RADAR	EBENS I-IAC 10.5 RADAR	BASHHH I-IAC 13.6 RADAR	RIPPR I-IAC 16.8 RADAR	GRABL I-IAC 19.9 RADAR
				JOEBO I-IAC 23.1 RADAR
				NRMAH I-IAC 26.2 RADAR
IM	2200	4000	5000	6000
				7000
				8000
				9000
				GS 3.00° TCH 57
1066'	4.7 NM	6 NM	3.1 NM	3.1 NM
3.1 NM	3.1 NM	3.1 NM	3.1 NM	3.1 NM
CATEGORY	A	B	C	D
S-ILS 27L	RA 165/14 150 DA 804			

SA CATEGORY I ILS - SPECIAL AIRCREW & AIRCRAFT CERTIFICATION REQUIRED