

LOC/DME I-VZE 108.95 Chan 26 (Y)	APP CRS 273°	Rwy ldg 10800 TDZE 651 Apt Elev 680
---	------------------------	--

ILS RWY 28C (SA CAT I)

CHICAGO O'HARE INTL (ORD)

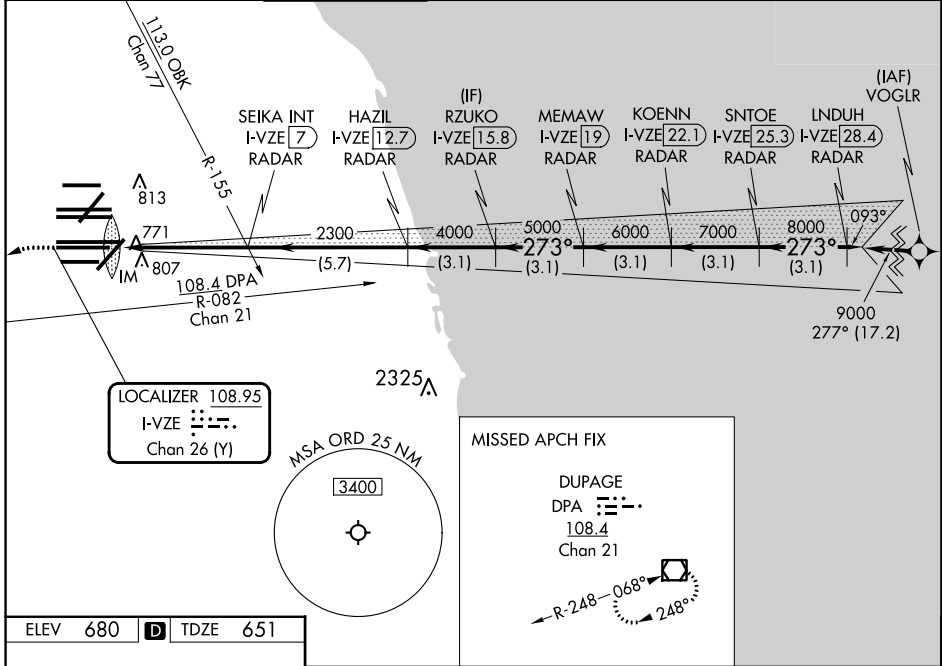
From VOGLR: RNAV 1-GPS required.
Aircraft not GPS equipped - RADAR required for procedure entry.
DME or RADAR required.

ALSf-2

MISSED APPROACH: Climb to 1100 then climbing left turn to 4000 on heading 215° and DPA VOR/DME R-082 to DPA VOR/DME and hold.

Simultaneous approach authorized. Requires specific OPSPEC, MSPEC, or LOA approval and use of HUD to DH.

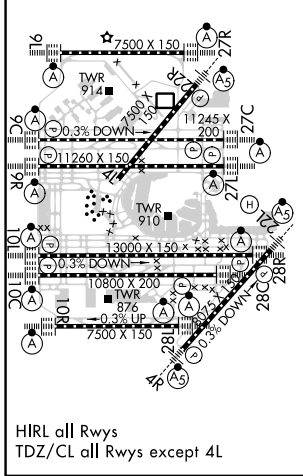
D-ATIS 135.4 282.225	CHICAGO APP CON 119.0 292.125	O'HARE TOWER 120.75 348.0	GND CON (TWR NORTH) 124.125 (TWR SOUTH) 118.05 (ALL TWRs) 226.675	(TWR CENTER) (OBND) 121.75 (IBND) 121.9	CLNC DEL 121.6	CPDLC
--	---	-------------------------------------	---	--	--------------------------	-------



EC-3, 03 OCT 2024 to 31 OCT 2024

EC-3, 03 OCT 2024 to 31 OCT 2024

ELEV 680	D	TDZE 651
----------	---	----------



1100 4000 DPA R-082 DPA VGSi and ILS glidepath not coincident (VGSi Angle 3.00/TCH 80).

Detailed diagram showing the glide path from 1100 ft to 9000 ft. Key features include:

- Heading 215° for DPA R-082.
- DME stations: SEIKA INT (7), HAZIL (12.7), RZUKO (15.8), MEMAW (19), KOENN (22.1), SNTOE (25.3), and LINDUH (28.4).
- Vertical curve: 2300 ft at 5.7 NM, 4000 ft at 3.1 NM, 7000 ft at 3.1 NM, 8000 ft at 3.1 NM, 9000 ft at 3.1 NM.
- GS 3.00° TCH 55.

1044'	5 NM	5.7 NM	3.1 NM	3.1 NM	3.1 NM	3.1 NM	3.1 NM
CATEGORY	A	B	C	C	D	D	D
S-ILS 28C	RA 155/14 150 DA 801						

SA CATEGORY I ILS - SPECIAL AIRCREW & AIRCRAFT CERTIFICATION REQUIRED