

LOC/DME I-SXH 108.95 Chan 26(Y)	APP CRS 093°	Rwy Idg TDZE 669 Apt Elev 680
--	------------------------	---

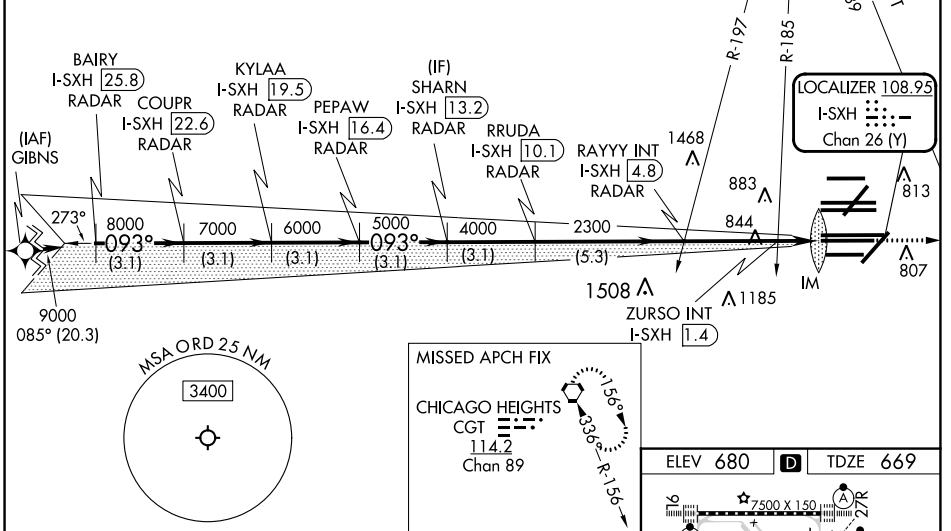
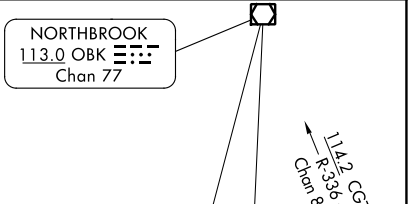
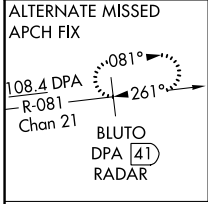
ILS or LOC RWY 10C

CHICAGO O'HARE INTL (ORD)

From GIBNS: RNAV-1 GPS required.
 RNAV 1-GPS or RADAR required for procedure entry. DME or RADAR required.
 Simultaneous approach authorized.

ALSf-2
 MISSED APPROACH: Climb to 4000 on heading 093° and CGT VORTAC R-336 to CGT VORTAC and hold.

D-ATIS 135.4 282.225	CHICAGO APP CON 119.0 292.125	O'HARE TOWER 120.75 348.0	GND CON (TWR CENTER) 124.125 (TWR NORTH) 118.05 (TWR SOUTH) 226.675 (ALL TWRs)	(TWR CENTER) 121.75 (OBND) 121.9 (IBND)	CLNC DEL 121.6	CPDLC
--	---	-------------------------------------	--	---	--------------------------	-------



BAIRY I-SXH (25.8) RADAR	COUPR I-SXH (22.6) RADAR	KYLAA I-SXH (19.5) RADAR	PEPAW I-SXH (16.4) RADAR	SHARN I-SXH (13.2) RADAR	RRUDA I-SXH (10.1) RADAR	RAYYY INT I-SXH (4.8) RADAR	ZURSO INT I-SXH (1.4) RADAR	I-SXH DME ANTENNA
VGSi and ILS glidepath not coincident KYLAA (VGSi Angle 3.00/TCH 75).								
*LOC only hdg 093° CGT R-336 CGT								
GS 3.00° TCH 55 9000 8000 7000 6000 5000 4000 2300 *1220								
3.1 NM 3.1 NM 3.1 NM 3.1 NM 3.1 NM 5.3 NM 3.4 NM 1.5 NM 0.1 NM								
CATEGORY	A		B		C		D	
S-ILS 10C	869/18		200 (200-½)					
S-LOC 10C	1220/24		551 (600-½)		1220/60 551 (600-1¼)			
ZURSO FIX MINIMUMS (DUAL VOR RECEIVERS OR DME REQUIRED)								
S-LOC 10C	1100/24		431 (500-½)		1100/40 431 (500-¾)			

