

LOC/DME I-MED <b>111.1</b> Chan <b>48</b>	APP CRS <b>093°</b>	Rwy Idg <b>12246</b> TDZE <b>672</b> Apt Elev <b>680</b>
---	------------------------	--

# ILS or LOC RWY 10L

CHICAGO O'HARE INTL (ORD)

From GIBNS: RNAV-1 GPS required.

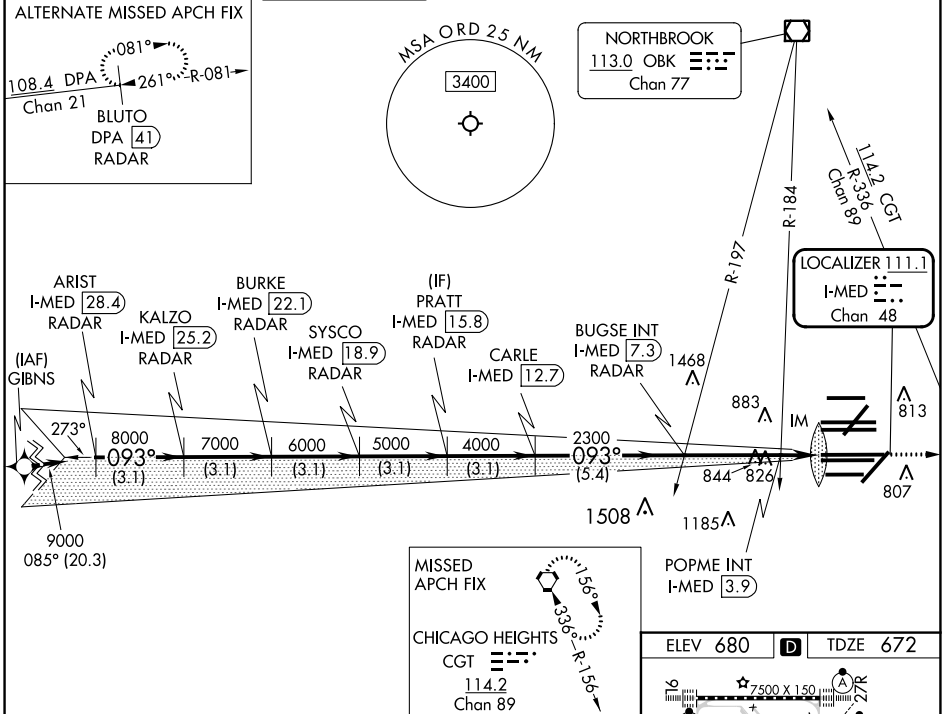
RNAV 1-GPS or RADAR required for procedure entry. DME or RADAR required.

Simultaneous approach authorized.

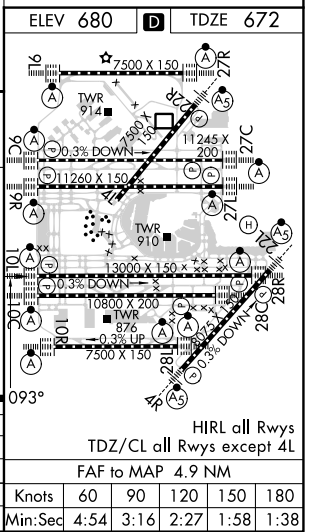
ALSF-2

MISSED APPROACH: Climb to 4000 on heading 093° and CGT VORTAC R-336 to CGT VORTAC and hold.

D-ATIS <b>135.4</b> <b>282.225</b>	CHICAGO APP CON <b>119.0 292.125</b>	O'HARE TOWER <b>132.7 348.0</b>	GND CON (TWR CENTER) <b>124.125</b> (TWR NORTH) <b>118.05</b> (TWR SOUTH) <b>226.675</b> (ALL TWRS)	(TWR CENTER) <b>121.75</b> (OBND) <b>121.9</b> (IBND)	CLNC DEL <b>121.6</b>	CPDLC
--	---	------------------------------------	--	---	--------------------------	-------



ARIST I-MED 28.4 RADAR	BURKE I-MED 22.1 RADAR	PRATT I-MED 15.8 RADAR	BURKE I-MED 22.1 RADAR	PRATT I-MED 15.8 RADAR	BUGSE INT I-MED 7.3	CGT R-336	CGT																																																
KALZO I-MED 25.2 RADAR	SYSCO I-MED 18.9 RADAR	CARLE I-MED 12.7 RADAR	SYSCO I-MED 18.9 RADAR	CARLE I-MED 12.7 RADAR	POPME INT I-MED 3.9	hdg 093°																																																	
*LOC only																																																							
<table border="1"> <tr> <td>9000</td> <td>8000</td> <td>7000</td> <td>6000</td> <td>5000</td> <td>4000</td> <td>2300</td> <td>1200</td> </tr> <tr> <td>3.1 NM</td> <td>3.1 NM</td> <td>3.1 NM</td> <td>3.1 NM</td> <td>3.1 NM</td> <td>5.4 NM</td> <td>3.4 NM</td> <td>1.4 NM</td> </tr> </table>								9000	8000	7000	6000	5000	4000	2300	1200	3.1 NM	3.1 NM	3.1 NM	3.1 NM	3.1 NM	5.4 NM	3.4 NM	1.4 NM																																
9000	8000	7000	6000	5000	4000	2300	1200																																																
3.1 NM	3.1 NM	3.1 NM	3.1 NM	3.1 NM	5.4 NM	3.4 NM	1.4 NM																																																
<table border="1"> <tr> <td>GS 3.00°</td> <td colspan="7">TCH 56</td> </tr> <tr> <td>CATEGORY</td> <td colspan="2">A</td> <td colspan="2">B</td> <td colspan="2">C</td> <td>D</td> </tr> <tr> <td>S-ILS 10L</td> <td colspan="7">872/18 200 (200-½)</td> </tr> <tr> <td>S-LOC 10L</td> <td>1200/24</td> <td>528 (600-½)</td> <td colspan="2">1200/55</td> <td colspan="3">528 (600-1)</td> </tr> <tr> <td colspan="8">POPME FIX MINIMUMS (DUAL VOR RECEIVERS OR DME REQUIRED)</td> </tr> <tr> <td>S-LOC 10L</td> <td>1080/24</td> <td>408 (400-½)</td> <td colspan="2">1080/40</td> <td colspan="3">408 (400-¾)</td> </tr> </table>								GS 3.00°	TCH 56							CATEGORY	A		B		C		D	S-ILS 10L	872/18 200 (200-½)							S-LOC 10L	1200/24	528 (600-½)	1200/55		528 (600-1)			POPME FIX MINIMUMS (DUAL VOR RECEIVERS OR DME REQUIRED)								S-LOC 10L	1080/24	408 (400-½)	1080/40		408 (400-¾)		
GS 3.00°	TCH 56																																																						
CATEGORY	A		B		C		D																																																
S-ILS 10L	872/18 200 (200-½)																																																						
S-LOC 10L	1200/24	528 (600-½)	1200/55		528 (600-1)																																																		
POPME FIX MINIMUMS (DUAL VOR RECEIVERS OR DME REQUIRED)																																																							
S-LOC 10L	1080/24	408 (400-½)	1080/40		408 (400-¾)																																																		



EC-3, 03 OCT 2024 to 31 OCT 2024

EC-3, 03 OCT 2024 to 31 OCT 2024