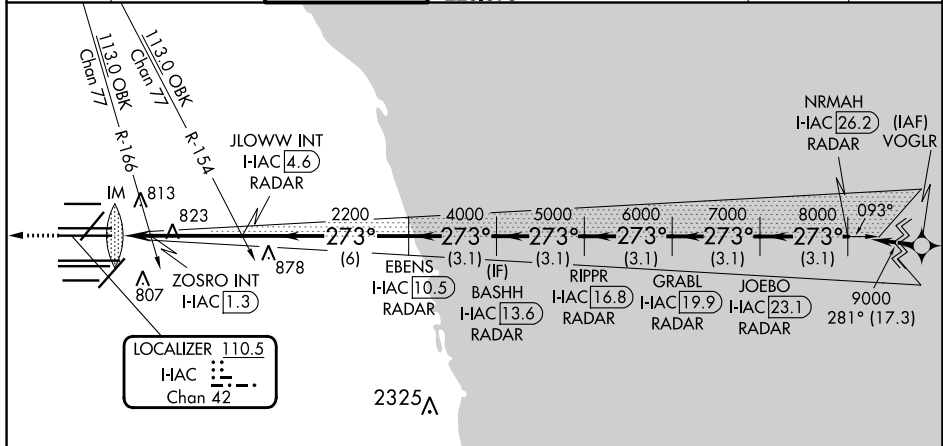


LOC/DME I-AIC <b>110.5</b> Chan <b>42</b>	APP CRS <b>273°</b>	Rwy ldg <b>11260</b> TDZE <b>654</b> Apt Elev <b>680</b>
---	------------------------	--

# ILS or LOC RWY 27L

CHICAGO O'HARE INTL (ORD)

RNP APCH-GPS from VOR/LR Aircraft not GPS equipped - RADAR required for procedure entry. DME or RADAR required.		ALSF-2 ⓐ		MISSED APPROACH: Climb to 1200 then climb to 4000 on heading 265° and on CGT VORTAC R-307 to WASCO/CGT 45.8 DME/RADAR and hold.	
▼ Simultaneous approach authorized. For inop ALS, increase S-LOC 27L Cat C/D visibility to 1½ SM.					
D-ATIS <b>135.4</b> <b>282.225</b>	CHICAGO APP CON <b>119.0 292.125</b>	O'HARE TOWER <b>126.9 348.0</b>	GND CON (TWR NORTH) <b>124.125</b> (TWR SOUTH) <b>118.05</b> (ALL TWRs) <b>226.675</b>	(TWR CENTER) (OBND) <b>121.75</b> (IBND) <b>121.9</b>	CLNC DEL <b>121.6</b>  CPDLC



ELEV 680	D	TDZE 654
----------	---	----------

HIRL all Rwys  
TDZ/CL all Rwys except 4L

FAF to MAP 4.7 NM

Knots	60	90	120	150	180
Min:Sec	4:42	3:08	2:21	1:53	1:34

1200	4000	CGT R-307	WASCO CGT 45.8 RADAR	VGSI and ILS glidepath not coincident (VGSI Angle 3.00/TCH 77).			
hdg 265°		JLOWW INT I-AIC 4.6 RADAR	BASHHH I-AIC 13.6 RADAR	GRABL I-AIC 19.9 RADAR	JOEBO I-AIC 23.1 RADAR	NRM AH I-AIC 26.2 RADAR	
I-AIC DME ANTENNA	ZOSRO INT I-AIC 1.3	EBENS I-AIC 10.5 RADAR	RIPPR I-AIC 16.8 RADAR	JOEBO I-AIC 23.1 RADAR			9000
0.1	1.3	3.3 NM	-6 NM-	3.1 NM	3.1 NM	3.1 NM	3.1 NM
CATEGORY A B C D							
S-ILS 27L 854/18 200 (200-½)							
S-LOC 27L 1160/24 506 (500-½) 1160/55 506 (500-1)							
ZOSRO FIX MINIMUMS (DUAL VOR RECEIVERS OR DME REQUIRED)							
S-LOC 27L 1080/24 426 (400-½) 1080/40 426 (400-¾)							

GS 3.00° TCH 57

EC-3, 03 OCT 2024 to 31 OCT 2024

EC-3, 03 OCT 2024 to 31 OCT 2024