

LOC/DME I-VQX <b>110.75</b> Chan 44(Y)	APP CRS <b>274°</b>	Rwy ldg TDZE Apt Elev	<b>7500</b> <b>667</b> <b>680</b>
--	------------------------	-----------------------------	---

# ILS or LOC RWY 28L

CHICAGO O'HARE INTL (ORD)

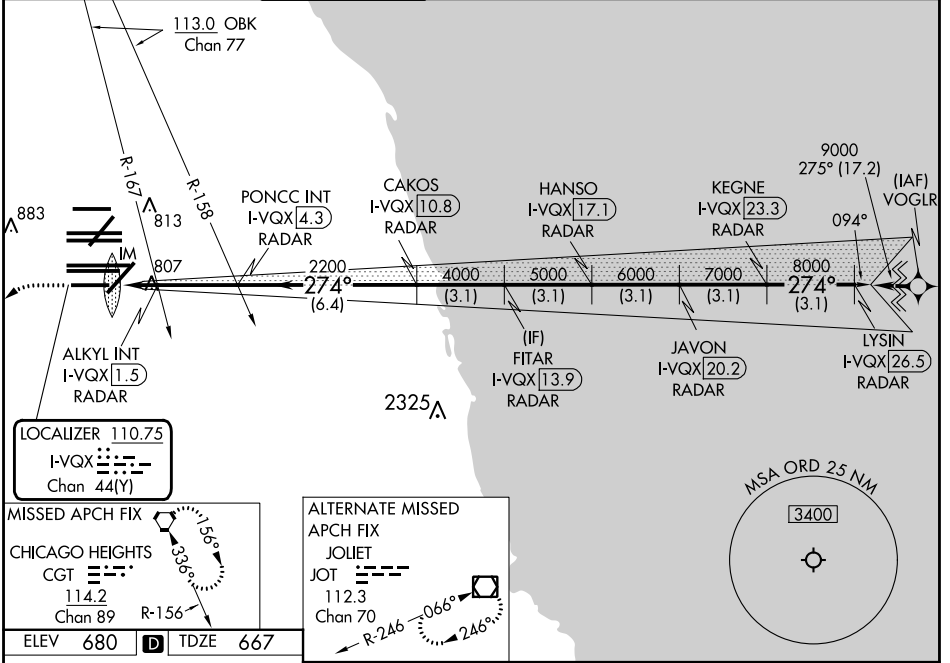
Aircraft not GPS equipped - RADAR required for procedure entry. DME or RADAR required.  
From VOGLR: RNAV 1-GPS required.

ALS-F-2

MISSED APPROACH: Climb to 1200 then climbing left turn to 4000 direct CGT VORTAC and hold.

Simultaneous approach authorized.

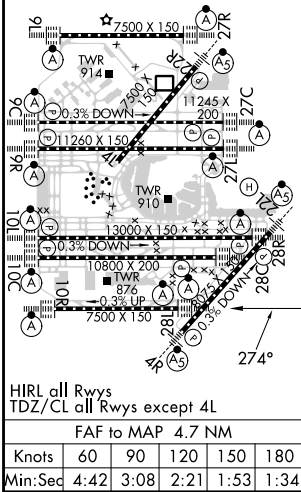
D-ATIS <b>135.4</b> <b>282.225</b>	CHICAGO APP CON <b>119.0 292.125</b>	O'HARE TOWER <b>133.0 348.0</b>	GND CON (TWR NORTH) <b>124.125</b> (TWR SOUTH) <b>118.05</b> (ALL TWRS) <b>226.675</b>	(TWR CENTER) <b>121.75</b> (OBND) (IBND) <b>121.9</b>	CLNC DEL <b>121.6</b>	CPDLC
--	---	------------------------------------	---	--	--------------------------	-------



EC-3, 03 OCT 2024 to 31 OCT 2024

EC-3, 03 OCT 2024 to 31 OCT 2024

ELEV 680	D	TDZE 667
----------	---	----------



1200	4000	CGT	*LOC only.						
I-VQX DME ANTENNA		ALSKY INT I-VQX [1.5] RADAR	PONCC INT I-VQX [4.3] RADAR	CAKOS I-VQX [10.8] RADAR	(IF) FITAR I-VQX [13.9] RADAR	HANSO I-VQX [17.1] RADAR	JAVON I-VQX [20.2] RADAR	KEGNE I-VQX [23.3] RADAR	LYSIN I-VQX [26.5] RADAR
I-VQX [0.3]	*I-VQX [0.8]	*I-VQX [1.5]	*I-VQX [4.3]	*I-VQX [10.8]	*I-VQX [13.9]	*I-VQX [17.1]	*I-VQX [20.2]	*I-VQX [23.3]	*I-VQX [26.5]
0.2	0.9	0.7	2.9 NM	6.4 NM	3.1 NM	3.1 NM	3.1 NM	3.1 NM	3.1 NM
CATEGORY	A		B		C		D		
S-ILS 28L	867/18 200 (200-½)								
S-LOC 28L	1240/24 573 (600-½)			1240-1¼ 573 (600-1¼)					
ALKYL FIX MINIMUMS (DUAL VOR RECEIVERS OR DME REQUIRED)									
S-LOC 28L	1060/24 393 (400-½)			1060/35 393 (400-⅝)					