

LOC/DME I-JAV 110.5	APP CRS 093°	Rwy Idg 11260 TDZE 668 Apt Elev 680
Chan 42		

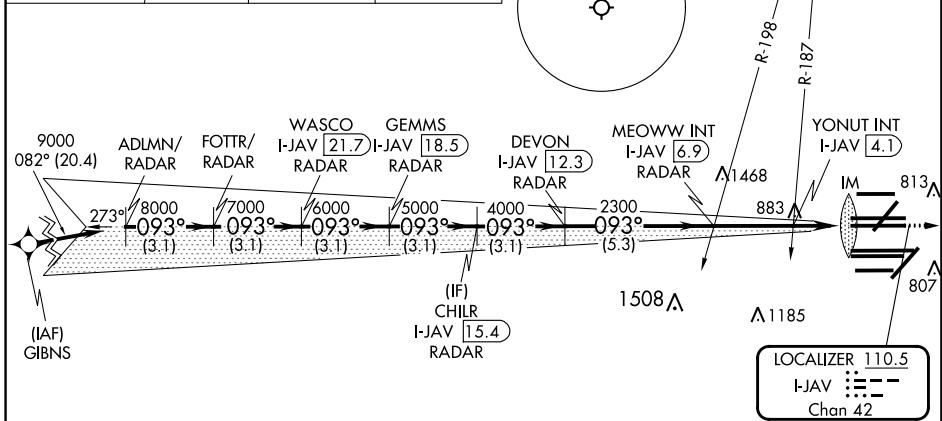
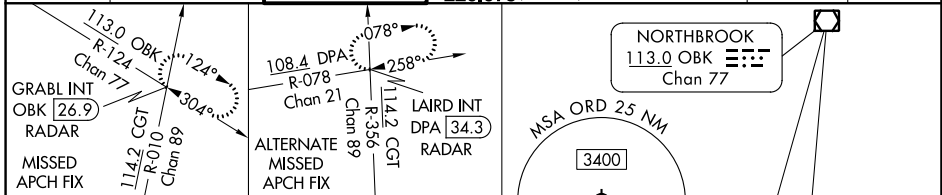
ILS or LOC RWY 9R

CHICAGO O'HARE INTL (ORD)

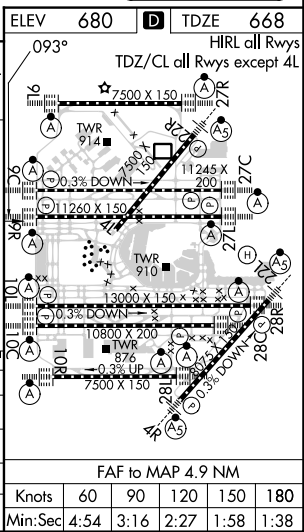
RNP APCH-GPS from GIBNS.
 Aircraft not GPS equipped - RADAR required for procedure entry. RADAR or DME required.
 Simultaneous approach authorized. For inop ALS, increase S-LOC 9R Cat C/D visibility to 2 SM.

ALS-F-2 MISSED APPROACH: Climb to 1200 then climb to 4000 on heading 085° and OBK VOR/DME R-124 to GRABL INT/OKB 26.9 DME/RADAR and hold.

D-ATIS 135.4 282.225	CHICAGO APP CON 119.0 292.125	O'HARE TOWER 126.9 348.0	GND CON (TWR NORTH) 124.125 (TWR SOUTH) 118.05 (ALL TWRs) 226.675	(TWR CENTER) 121.75 (OBND) 121.9 (IBND)	CLNC DEL 121.6	CPDLC
--	---	------------------------------------	---	---	--------------------------	-------



VGSi and ILS glidepath not coincident (VGSi Angle 3.00/TCH 76).		1200	4000	OBK R-124	GRABL INT
ADLMN/RADAR	FOTTR/RADAR	WASCO I-JAV [21.7]	CHILR I-JAV [15.4]	MEOWW INT I-JAV [6.9]	YONUT INT I-JAV [4.1]
9000	8000	7000	6000	5000	4000
GS 3.00° TCH 58'	3.1 NM	3.1 NM	3.1 NM	3.1 NM	3.1 NM
CATEGORY	A	B	C	D	
S-ILS 9R	868/18		200 (200-½)		
S-LOC 9R	1380/24	712 (700-½)	1380-1½	712 (700-1½)	
YONUT FIX MINIMUMS (DUAL VOR RECEIVERS OR DME REQUIRED)					
S-LOC 9R	1120/24	452 (500-½)	1120/45	452 (500-¾)	



EC-3, 03 OCT 2024 to 31 OCT 2024

EC-3, 03 OCT 2024 to 31 OCT 2024

FAF to MAP 4.9 NM					
Knots	60	90	120	150	180
Min:Sec	4:54	3:16	2:27	1:58	1:38