

(JVL.JVL1) 23334

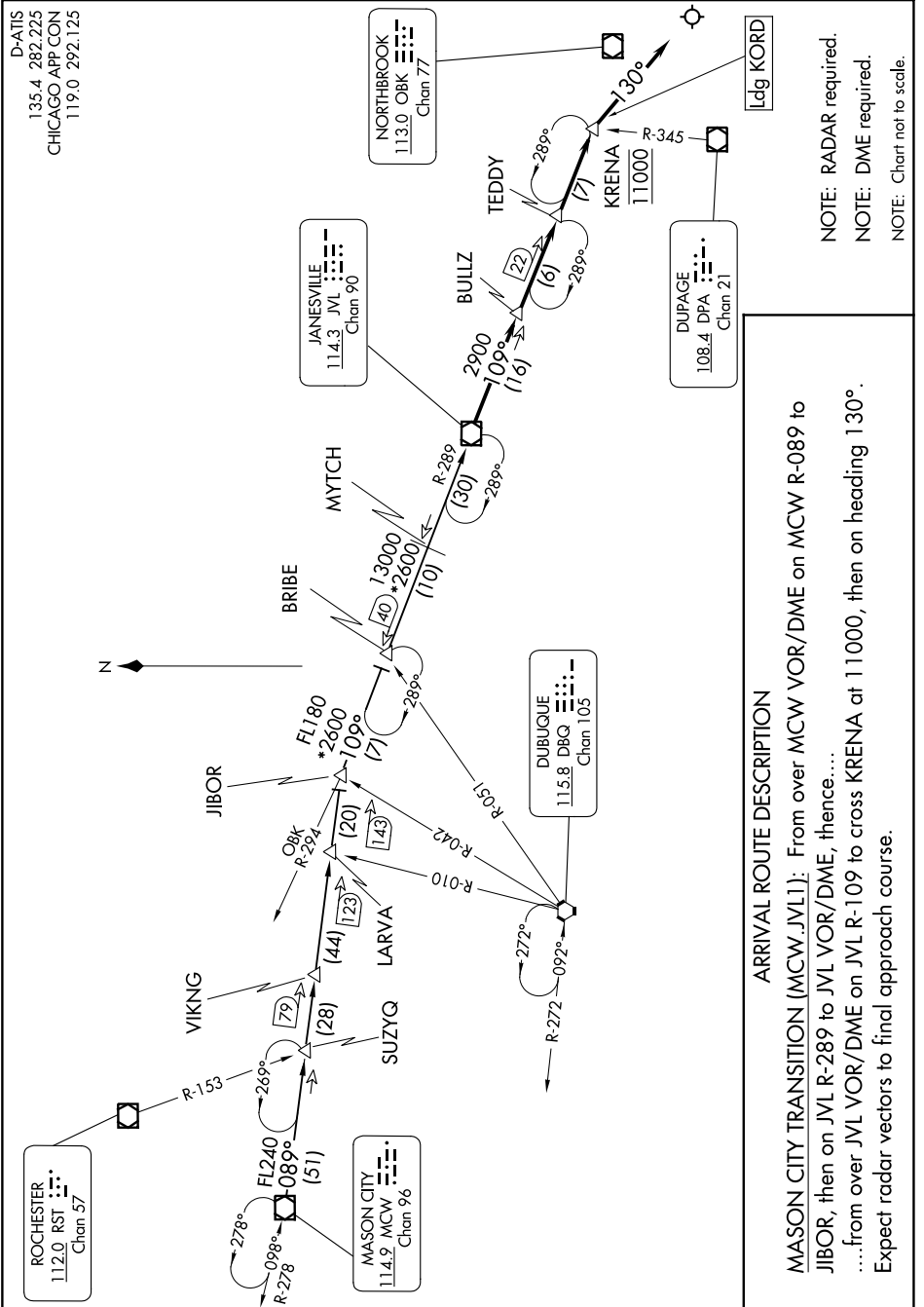
JANESVILLE ONE ARRIVAL

AL-166 (FAA)

CHICAGO O'HARE INTL (ORD)

CHICAGO, ILLINOIS

EC-3, 03 OCT 2024 to 31 OCT 2024



D-ATIS
135.4 282.225
CHICAGO APP CON
119.0 292.125

JANESVILLE
114.3 JVL
Chan 90

NORTHBROOK
113.0 OBK
Chan 77

DUPAGE
108.4 DPA
Chan 21

DUBUQUE
115.8 DBQ
Chan 105

Ldg KORD

ARRIVAL ROUTE DESCRIPTION

MASON CITY TRANSITION (MCW.JVL1): From over MCW VOR/DME on MCW R-089 to JIBOR, then on JVL R-289 to JVL VOR/DME, thence...
 ...from over JVL VOR/DME on JVL R-109 to cross KRENA at 11000, then on heading 130°. Expect radar vectors to final approach course.

NOTE: RADAR required.
 NOTE: DME required.
 NOTE: Chart not to scale.

JANESVILLE ONE ARRIVAL

(JVL.JVL1) 07OCT21

CHICAGO, ILLINOIS

CHICAGO O'HARE INTL (ORD)

EC-3, 03 OCT 2024 to 31 OCT 2024