

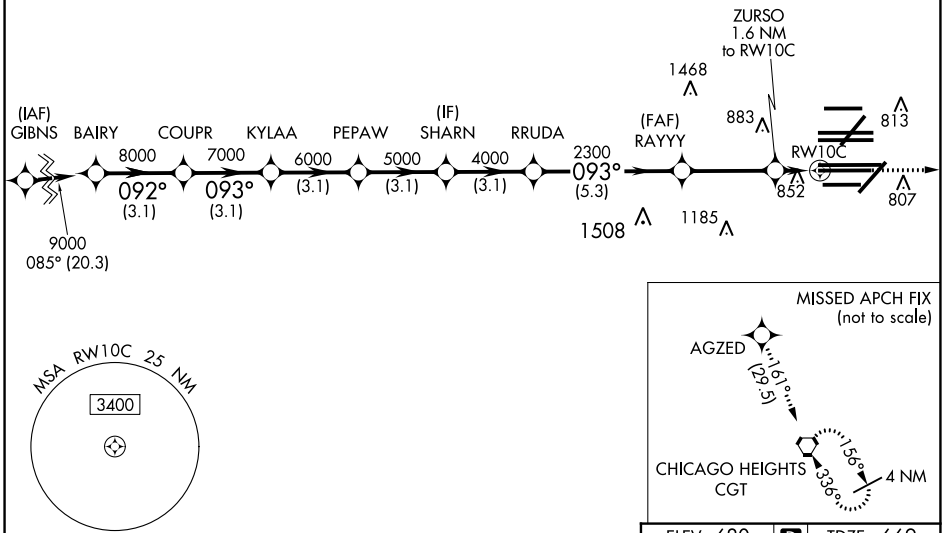
| | | |
|--|------------------------|--|
| WAAS CH 81934 W10B | APP CRS 093° | Rwy Idg 10540 TDZE 669 Apt Elev 680 |
|--|------------------------|--|

RNAV (GPS) RWY 10C

CHICAGO O'HARE INTL (ORD)

| | | | | | | | |
|---|---|-------------------------------------|---|---|--------------------------|--|--|
| RNP APCH - GPS. | | | | ALSF-2 | | MISSED APPROACH: Climb to 4000 direct AGZED and on track 161° to CGT VORTAC and hold. | |
| <p>Simultaneous approach authorized. For uncompensated Baro-VNAV systems, LNAV/VNAV NA below -19°C or above 54°C. LNAV procedure NA during simultaneous operations. Use of FD or AP required during simultaneous operations. Rwy 10C helicopter visibility reduction below RVR 4000 NA.</p> | | | | | | | |
| D-ATIS 135.4 282.225 | CHICAGO APP CON 119.0 292.125 | O'HARE TOWER 120.75 348.0 | GND CON 124.125 (TWR NORTH) 118.05 (TWR SOUTH) 226.675 (ALL TWRs) | (TWR CENTER) 121.75 (OBND) 121.9 (IBND) | CLNC DEL 121.6 | CPDLC | |

RADAR REQUIRED



EC-3, 03 OCT 2024 to 31 OCT 2024

EC-3, 03 OCT 2024 to 31 OCT 2024

| | | | | | | | | | |
|--|---------|-------------|-------------|-------------|----------|---------|------------------|--------|--|
| VGSI and RNAV glidepath not coincident (VGSI Angle 3.00/TCH 75). | | 4000 | AGZED | CGT | ELEV 680 | | TDZE 669 | | |
| | | | | | | | | | |
| BAIRY | COUPR | KYLAA | PEPAW | SHARN | RRUDA | RAYYY | ZURSO | RWY10C | |
| 9000 | 8000 | 7000 | 6000 | 5000 | 4000 | 2300 | 1.6 NM to RWY10C | 1220 | |
| GP 3.00° TCH 55 | | | | | | | | | |
| | 3.1 NM | 3.1 NM | 3.1 NM | 3.1 NM | 3.1 NM | -5.3 NM | -3.4 NM | 1.6 NM | |
| CATEGORY | A | | B | | C | | D | | |
| LPV DA | 869/18 | | 200 (200-½) | | | | | | |
| LNAV/VNAV DA | 1062/40 | | 393 (400-¾) | | | | | | |
| LNAV MDA | 1120/24 | 451 (500-½) | 1120/45 | 451 (500-¾) | | | | | |

