

CHICAGO, ILLINOIS

AL-166 (FAA)

# RNAV (GPS) PRM Y RWY 28L

## (CLOSE PARALLEL)

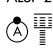
### CHICAGO O'HARE INTL (ORD)

WAAS CH <b>93839</b> <b>W28E</b>	APP CRS <b>275°</b>	Rwy Idg TDZE Apt Elev	<b>7500</b> <b>667</b> <b>680</b>
--	------------------------	-----------------------------	---

RNP APCH. RADAR required.

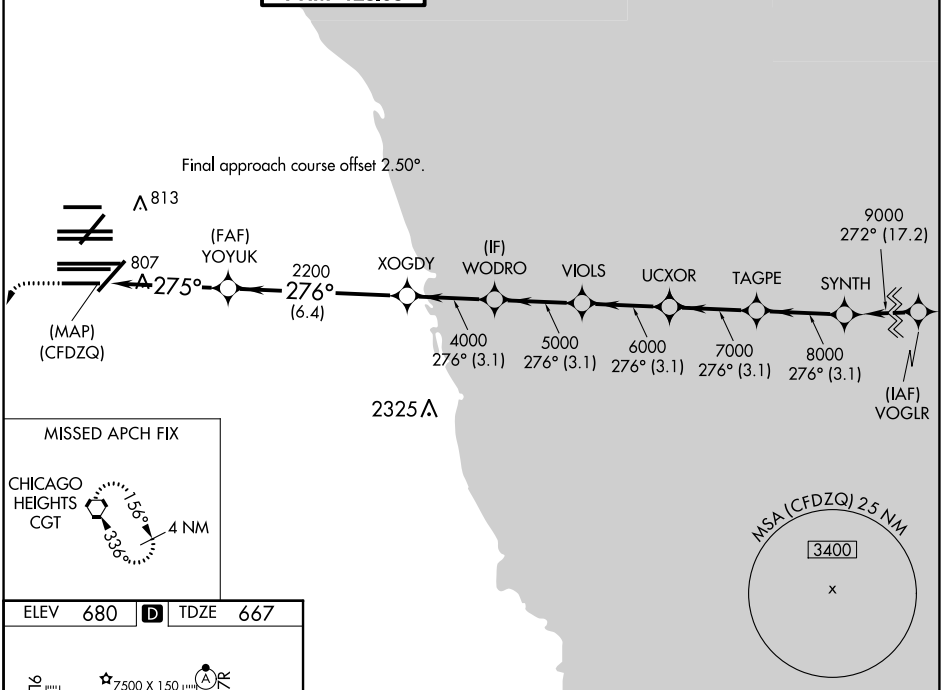
▼ For uncompensated Baro-VNAV systems, LNAV/VNAV NA below -19°C or above 54°C. Simultaneous approach authorized. Use of FD or AP required during simultaneous operations. Dual VHF comm required. See additional requirements on AAUP.

ALSIF-2

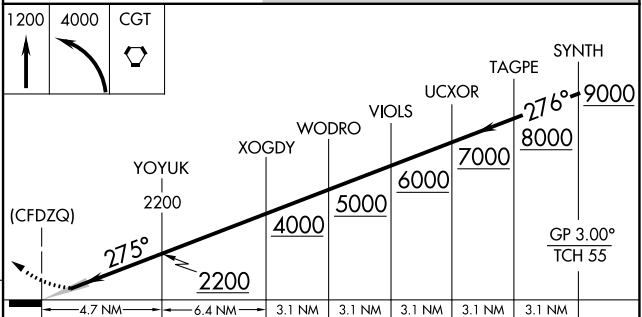
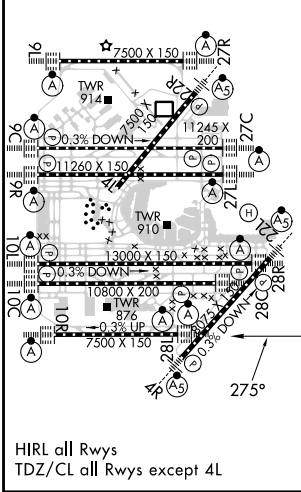


MISSED APPROACH: Climb to 1200 then climbing left turn to 4000 direct CGT VORTAC and hold.

D-ATIS <b>135.4</b> <b>282.225</b>	CHICAGO APP CON <b>119.0 292.125</b>	O'HARE TOWER <b>133.0 348.0</b> <b>PRM 128.05</b>	GND CON (TWR NORTH) <b>124.125</b> (TWR SOUTH) <b>118.05</b> (ALL TWRS) <b>226.675</b>	(TWR CENTER) (OBND) <b>121.75</b> (IBND) <b>121.9</b>	CLNC DEL <b>121.6</b>	CPDLC
--	---	---	--	---	--------------------------	-------



ELEV 680	D	TDZE 667
----------	---	----------



CATEGORY	A	B	C	D
LPV DA		917/24	250 (300-½)	
LNAV/VNAV DA		1090/40	423 (500-¾)	

CHICAGO, ILLINOIS

41°59'N-87°54'W

CHICAGO O'HARE INTL (ORD)

Orig-A 13SEP18

# RNAV (GPS) PRM Y RWY 28L (CLOSE PARALLEL)

EC-3, 03 OCT 2024 to 31 OCT 2024

EC-3, 03 OCT 2024 to 31 OCT 2024