

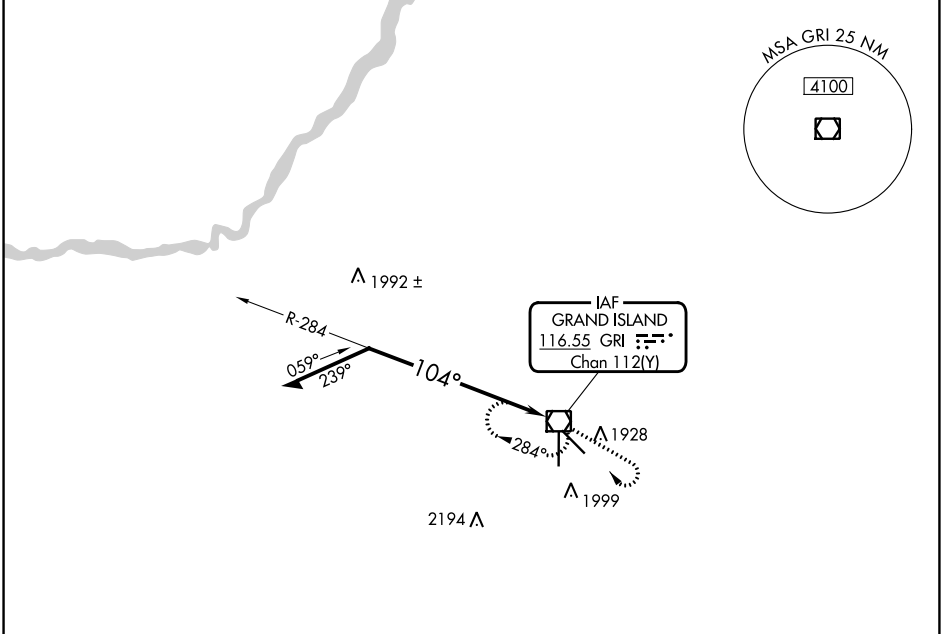
VOR/DME GRI 116.55 Chan 112(Y)	APP CRS 104°	Rwy Idg TDZE 1842 Apt Elev 1847
--	------------------------	---

VOR RWY 13

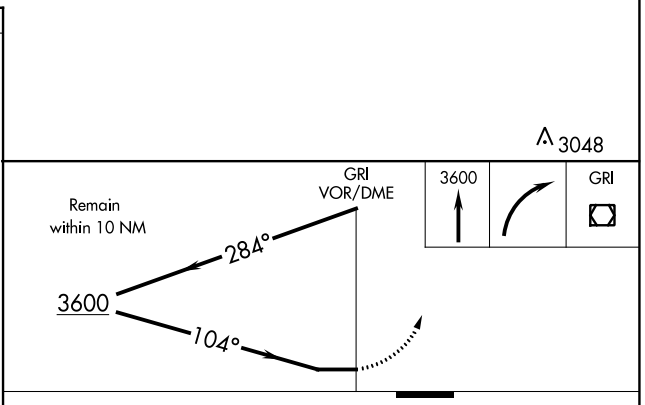
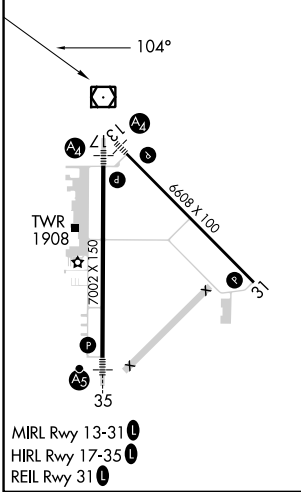
CENTRAL NEBRASKA RGNL (GRI)

⚠ When local altimeter setting not received, use Aurora altimeter setting and increase all MDA 60 feet, increase S-13 Cats C/D and Circling Cats C/D visibility 1/4 SM. Inop table does not apply to S-13 Cat C.	MALS 	MISSED APPROACH: Climb to 3600, then right turn direct GRI VOR/DME and hold.
---	----------	--

ATIS 127.4	MINNEAPOLIS CENTER 119.4 278.8	GRAND ISLAND TOWER* 118.2 (CTAF) 0 259.3	GND CON 121.9 259.3	CLNC DEL 121.9 <small>(when tower closed)</small>	UNICOM 122.95
----------------------	--	--	-------------------------------	--	-------------------------



ELEV 1847	D	TDZE 1842
-----------	----------	-----------



CATEGORY	A	B	C	D
S-13	2300-3/4 458 (500-3/4)		2300-1/4 458 (500-1/4)	2300-1/2 458 (500-1/2)
CIRCLING	2300-1 453 (500-1)		2400-1/2 553 (600-1/2)	2560-2/4 713 (800-2/4)

NC-2, 03 OCT 2024 to 31 OCT 2024

NC-2, 03 OCT 2024 to 31 OCT 2024