

BWALL TWO DEPARTURE (RNAV)

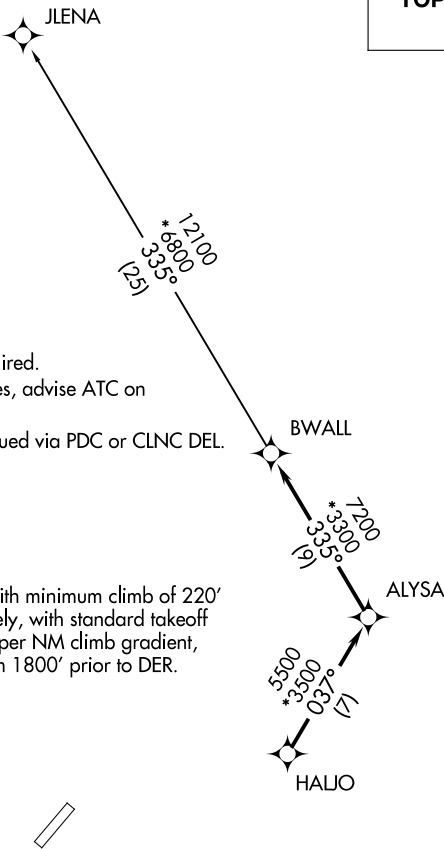
**TOP ALTITUDE:
3000**

AWOS-3
127.325
CLNC DEL
121.4
GND CON
121.4
DONALDSON TOWER ★
133.325 269.25
UNICOM
122.7
GREER DEP CON ★
118.8 270.275

- NOTE: For turbojets only.
- NOTE: RNAV 1.
- NOTE: RADAR required.
- NOTE: DME/DME/IRU or GPS required.
- NOTE: If unable to accept climb rates, advise ATC on initial contact.
- NOTE: Transponder code will be issued via PDC or CLNC DEL.

TAKEOFF MINIMUMS

Rwy 23: Standard.
Rwy 5: 300-1¾ or standard with minimum climb of 220' per NM to 1300, or alternatively, with standard takeoff minimums and a normal 200' per NM climb gradient, takeoff must occur no later than 1800' prior to DER.



NOTE: Chart not to scale.

SE-2, 03 OCT 2024 to 31 OCT 2024

SE-2, 03 OCT 2024 to 31 OCT 2024



DEPARTURE ROUTE DESCRIPTION

TAKEOFF ALL RUNWAYS: Climb on assigned heading for RADAR vectors to HALJO, then on depicted route to BWALL, thence. . . .

. . . .on JLENA transition. Maintain 3000. Expect clearance to filed altitude within 10 minutes after departure.

JLENA TRANSITION (BWALL2.JLENA)