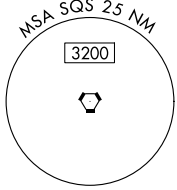
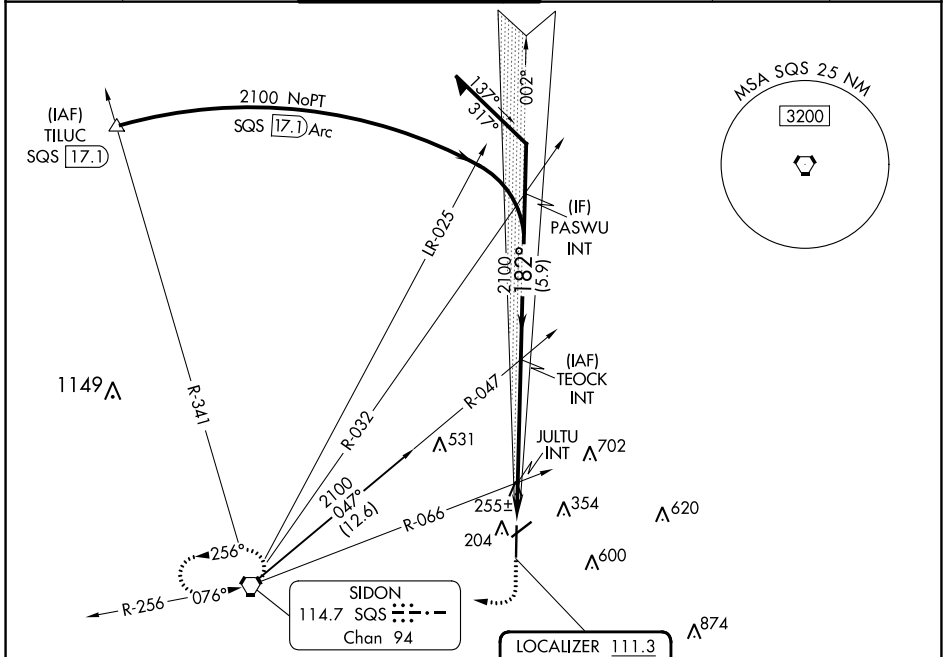


LOC I-GWO <b>111.3</b>	APP CRS <b>182°</b>	Rwy ldg TDZE Apt Elev	<b>6501</b> <b>145</b> <b>162</b>
---------------------------	------------------------	-----------------------------	---

# ILS or LOC RWY 18

GREENWOOD-LEFLORE (GWO)

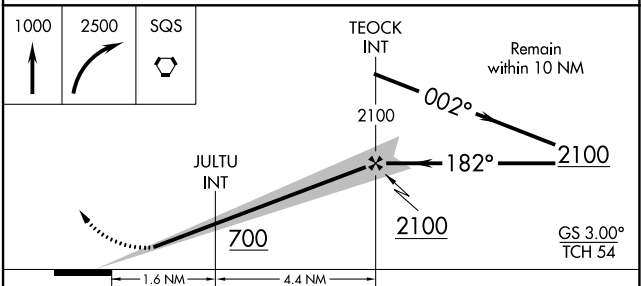
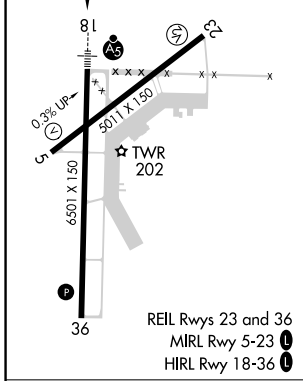
<b>⚠</b> Rwy 18 helicopter visibility reduction below 3/4 SM NA. Circling Rwy 5, 23 NA at night. For inop ALS, increase S-ILS 18 all Cats 2/3 SM, and S-LOC 18 Cat A/B visibility to 1 SM.	MALSR 	MISSED APPROACH: Climb to 1000 then climbing right turn to 2500 direct SQS VORTAC and hold.			
ASOS <b>119.975</b>	MEMPHIS CENTER <b>132.5 259.1</b>	GREENWOOD TOWER ★ <b>118.35 (CTAF) 0 367.6</b>	GND CON <b>125.55 373.4</b>	CLNC DEL <b>125.55</b>	UNICOM <b>122.95</b>



SC-4, 03 OCT 2024 to 31 OCT 2024

SC-4, 03 OCT 2024 to 31 OCT 2024

ELEV <b>162</b>	TDZE <b>145</b>
-----------------	-----------------



CATEGORY	A	B	C	D
S-ILS 18		464-3/4	319 (400-3/4)	
S-LOC 18		520-3/4	375 (400-3/4)	
<b>Ⓢ</b> CIRCLING	720-1 558 (600-1)	760-1 598 (600-1)	940-2 3/4 778 (800-2 3/4)	1020-3 858 (900-3)