

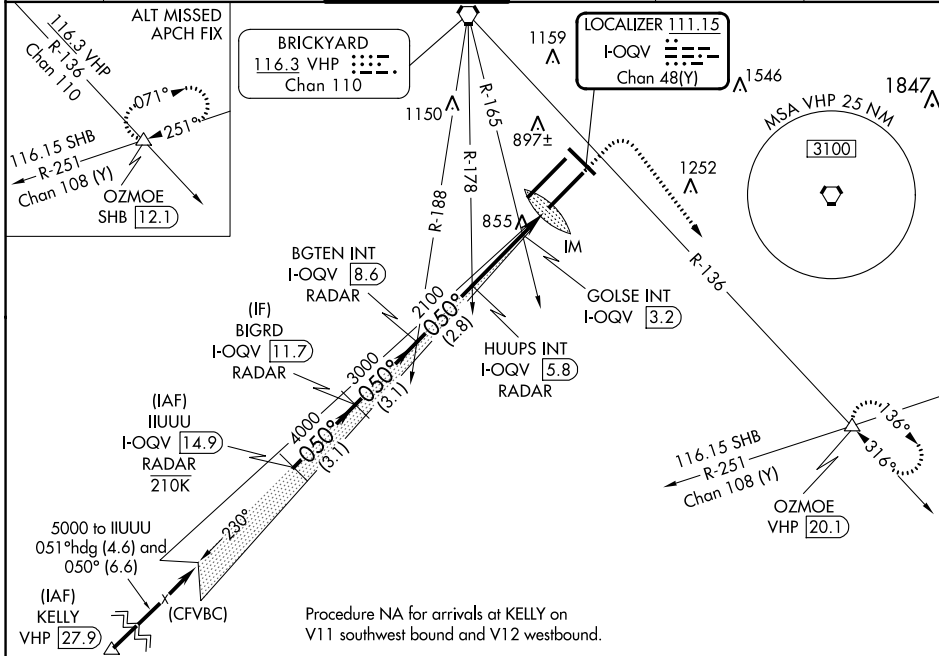
LOC/DME I-QQV 111.15 Chan 48(Y)	APP CRS 050°	Rwy ldg 10000 TDZE 791 Apt Elev 796
--	------------------------	--

ILS or LOC RWY 5R

INDIANAPOLIS INTL (IND)

DME or RADAR required. Simultaneous approach authorized.	ALSF-2	MISSED APPROACH: Climb to 1500 then climbing right turn to 3000 on heading 148° and on VHP VORTAC R-136 to OZMOE INT/VHP 20.1 DME and hold.			
		D-ATIS 134.25	INDIANAPOLIS APP CON 128.175 317.8	INDY TOWER 120.9 257.8	GND CON 121.9

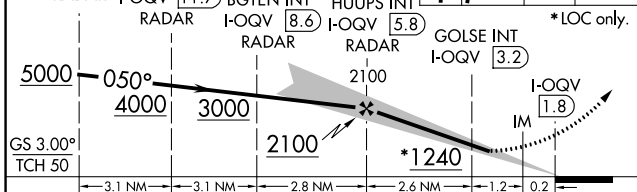
D-ATIS 134.25	INDIANAPOLIS APP CON 128.175 317.8	INDY TOWER 120.9 257.8	GND CON 121.9	CLNC DEL 128.75 257.8	CPDLC
-------------------------	--	----------------------------------	-------------------------	---------------------------------	-------



EC-2, 03 OCT 2024 to 31 OCT 2024

EC-2, 03 OCT 2024 to 31 OCT 2024

IIUUU I-QQV 14.9 RADAR	VGSI and ILS glidepath not coincident (VGSI Angle 3.00/TCH 71).	1500	3000	VHP R-136	OZMOE ELEV 796	TDZE 791
------------------------------	--	------	------	--------------	-------------------	----------



CATEGORY	A	B	C	D
S-ILS 5R	991/18 200 (200-½)			
S-LOC 5R	1240/24	449 (500-½)	1240/45	449 (500-¾)
CIRCLING	1420-1	624 (700-1)	1420-1¾ 624 (700-1¾)	1560-2½ 764 (800-2½)
GOLSE FIX MINIMUMS (DUAL VOR RECEIVERS or DME REQUIRED)				
S-LOC 5R	1160/24	369 (400-½)	1160/35	369 (400-¾)
CIRCLING	1420-1	624 (700-1)	1420-1¾ 624 (700-1¾)	1560-2½ 764 (800-2½)

