

MEARZ SEVEN DEPARTURE

INDIANAPOLIS, INDIANA

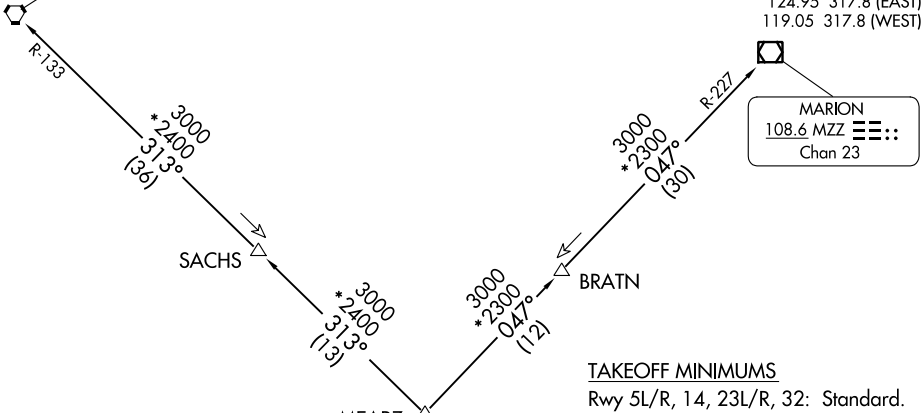
TOP ALTITUDE:
(JETS) 5000
(PROPS) 3000

RADAR required.

D-ATIS 134.25
CLNC DEL
128.75 257.8
CPDLC
GND CON
121.9
INDY TOWER
120.9 257.8
INDIANAPOLIS DEP CON
124.95 317.8 (EAST)
119.05 317.8 (WEST)

BOILER
115.1 BVT
Chan 98

MARION
108.6 MZZ
Chan 23



TAKEOFF MINIMUMS

Rwy 5L/R, 14, 23L/R, 32: Standard.

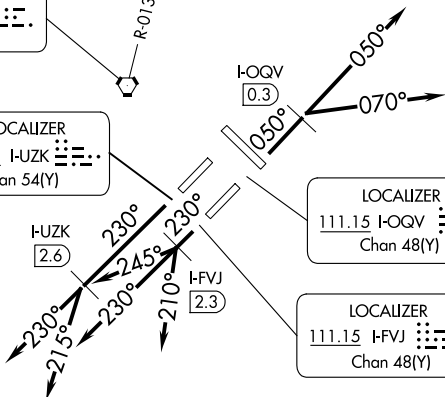
- NOTE: Turbojets accelerate to 250K until reaching 10000, if unable advise ATC.
- NOTE: Assigned to aircraft with a requested altitude of 11000 or above.
- NOTE: Select appropriate localizer/DME frequency/channel prior to departure.

BRICKYARD
116.3 VHP
Chan 110

LOCALIZER
111.75 I-UZK
Chan 54(Y)

LOCALIZER
111.15 I-OQV
Chan 48(Y)

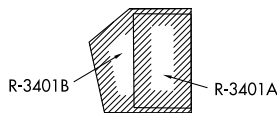
LOCALIZER
111.15 I-FVJ
Chan 48(Y)



EC-2, 03 OCT 2024 to 31 OCT 2024

EC-2, 03 OCT 2024 to 31 OCT 2024

(NARRATIVE ON FOLLOWING PAGE)



NOTE: Chart not to scale.