

| | | |
|--|------------------------|--|
| WAAS CH 77706 W23B | APP CRS 230° | Rwy Idg 11200 TDZE 783 Apt Elev 796 |
|--|------------------------|--|

RNAV (GPS) Y RWY 23R

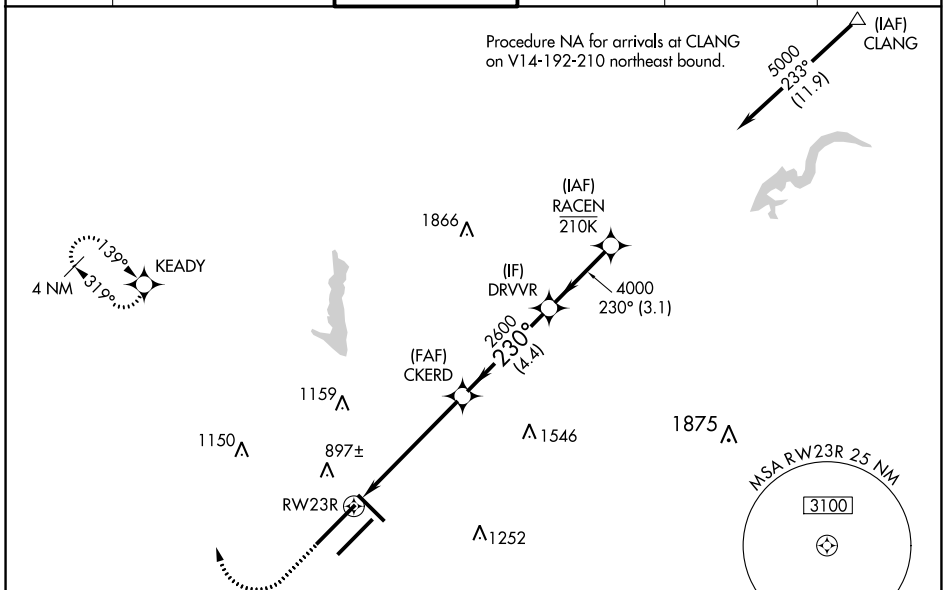
INDIANAPOLIS INTL (IND)

For uncompensated Baro-VNAV systems, LNAV/VNAV NA below -18°C (0°F) or above 54°C (130°F). DME/DME RNP-0.3 NA. For inoperative ALS, increase LNAV Cat C/D visibility to RVR 6000. Simultaneous approach authorized. LNAV procedure NA during simultaneous operations. Use of FD or AP providing RNAV track guidance required during simultaneous operations.
**** RVR 1800 authorized with use of FD or AP or HUD to DA.**



MISSED APPROACH:
Climb to 1500 then climbing right turn to 3000 direct KEADY and hold.

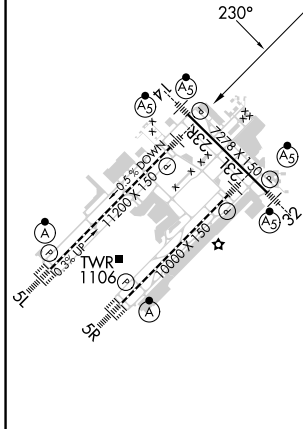
| | | | | | |
|-------------------------|--|----------------------------------|-------------------------|---------------------------------|-------|
| D-ATIS 134.25 | INDIANAPOLIS APP CON 128.175 317.8 | INDY TOWER 120.9 257.8 | GND CON 121.9 | CLNC DEL 128.75 257.8 | CPDLC |
|-------------------------|--|----------------------------------|-------------------------|---------------------------------|-------|



EC-2, 03 OCT 2024 to 31 OCT 2024

EC-2, 03 OCT 2024 to 31 OCT 2024

| | | |
|----------|----------|----------|
| ELEV 796 | D | TDZE 783 |
|----------|----------|----------|



| | | | | |
|--------------------|----------|-------------|--|-------------------------|
| 1500 | 3000 | KEADY | VGS1 and RNAV glidepath not coincident (VGS1 Angle 3.00/TCH 71). | |
| *LNAV only | | CKERD | DRVVR | RACEN |
| *1.1 NM to RWY 23R | | 2600 | 4000 | 5000 |
| RWY 23R | | 2600 | 4000 | GP 3.00° TCH 55 |
| 1.1 NM | | 4.4 NM | 4.4 NM | 3.1 NM |
| CATEGORY | A | B | C | D |
| LPV DA | **983/24 | | 200 (200-½) | |
| LNAV/VNAV DA | 1165/40 | | 382 (400-¾) | |
| LNAV MDA | 1200/24 | 417 (500-½) | 1200/40 | 417 (500-¾) |
| C CIRCLING | 1420-1 | 624 (700-1) | 1420-1¾ 624 (700-1¾) | 1560-2½ 764 (800-2½) |

HIRL all Rwys
TDZ/CL Rwys 5L and 5R