

APP CRS	Rwy Idg	6005
177°	TDZE	966
	Apt Elev	966

RNAV (GPS) RWY 18

KIRKSVILLE RGNL (IRK)

RNP APCH.

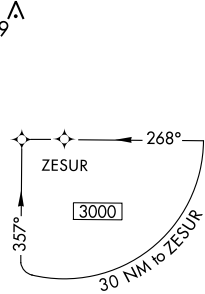
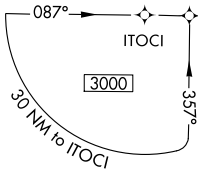
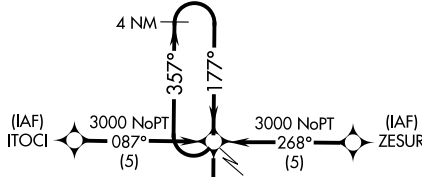
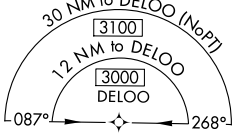
▼ Circling NA to Rwys 9 and 27.
Rwy 18 helicopter visibility reduction below ¾ SM NA.

MISSED APPROACH: Climb to 3000 direct HOROK and hold.

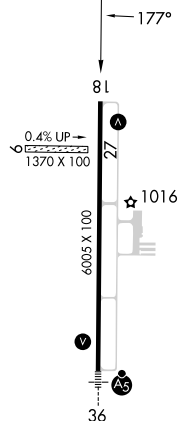
ASOS
121.125

KANSAS CITY CENTER
132.6 370.9

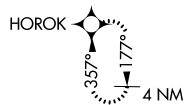
UNICOM
122.8 (CTAF) 0



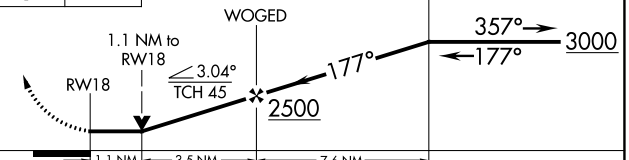
ELEV 966 **D** TDZE 966



MISSED APCH FIX



3000 HOROK VGSI and descent angles not coincident (VGSI Angle 3.00/TCH 33). 4 NM Holding Pattern



REIL Rwy 18 **0**
HIRL Rwy 18-36 **0**

CATEGORY	A	B	C	D
LNAV MDA	1340-1 374 (400-1)			1340-1¼ 374 (400-1¼)
CIRCLING	1400-1 434 (500-1)	1440-1 474 (500-1)	1460-1½ 494 (500-1½)	1540-2 574 (600-2)