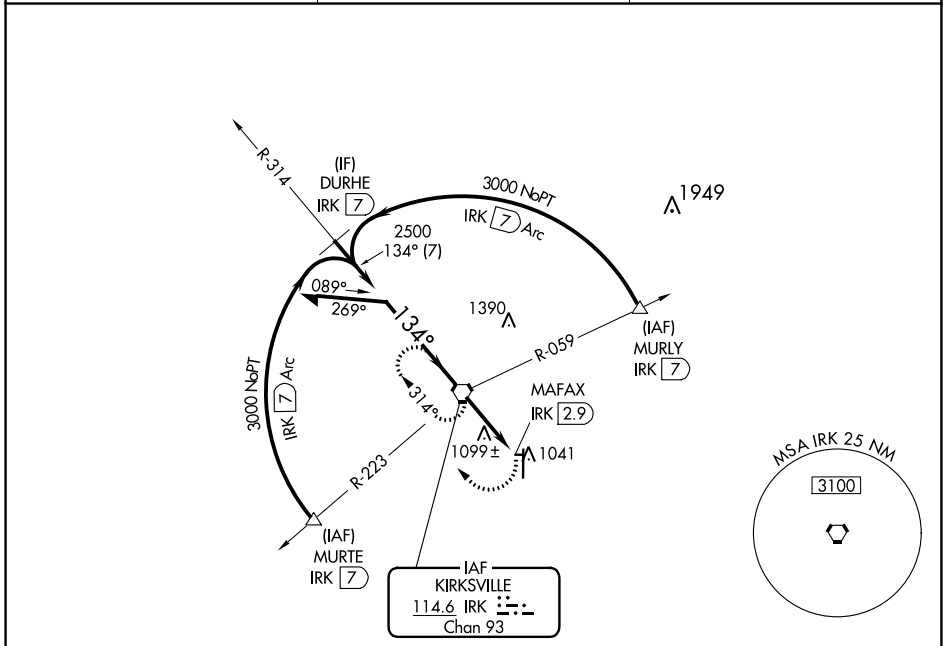


VORTAC IRK <b>114.6</b> Chan <b>93</b>	APP CRS <b>134°</b>	Rwy Idg TDZE Apt Elev <b>N/A</b> <b>N/A</b> <b>966</b>
--	------------------------	---

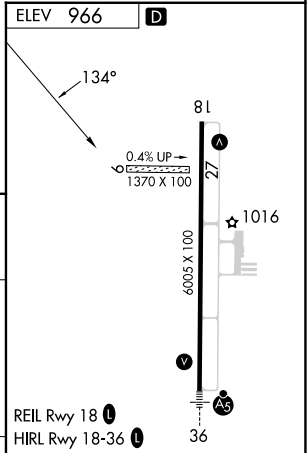
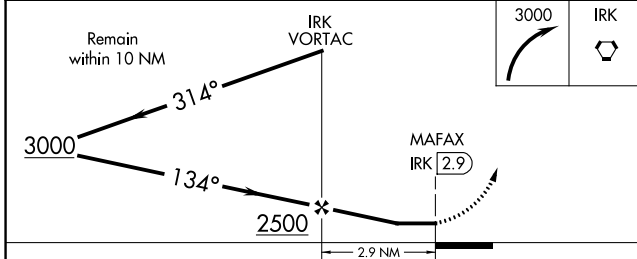
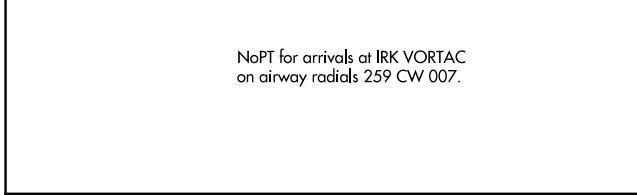
**VOR-A**  
KIRKSVILLE RGNL (IRK)

**▼** Circling NA to Rwy 9 and 27. MISSED APPROACH: Climbing right turn to 3000 direct IRK VORTAC and hold, continue climb-in-hold to 3000.

ASOS <b>121.125</b>	KANSAS CITY CENTER <b>132.6 370.9</b>	UNICOM <b>122.8</b> (CTAF) <b>📻</b>
------------------------	--	--



NoPT for arrivals at IRK VORTAC on airway radials 259 CW 007.



CATEGORY	FAF to MAP 2.9 NM			
	A	B	C	D
CIRCLING	1400-1 434 (500-1)	1440-1 474 (500-1)	1460-1½ 494 (500-1½)	1540-2 574 (600-2)
	Knots 2:54	60 1:56	90 1:27	120 1:10
	150 1:10	180 0:58		